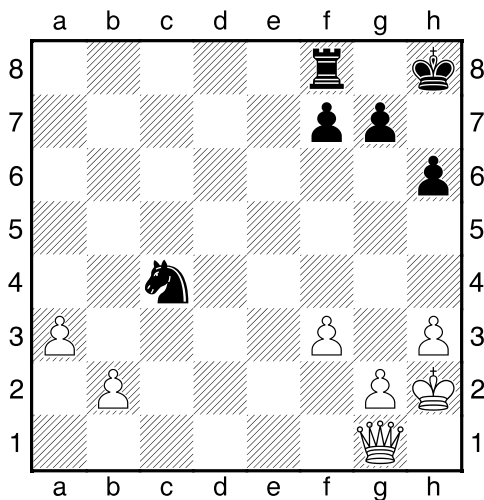
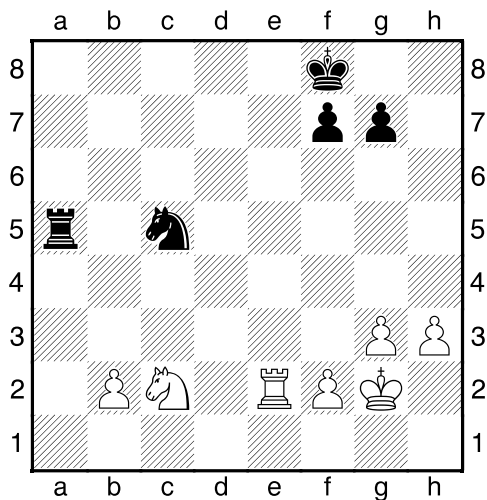


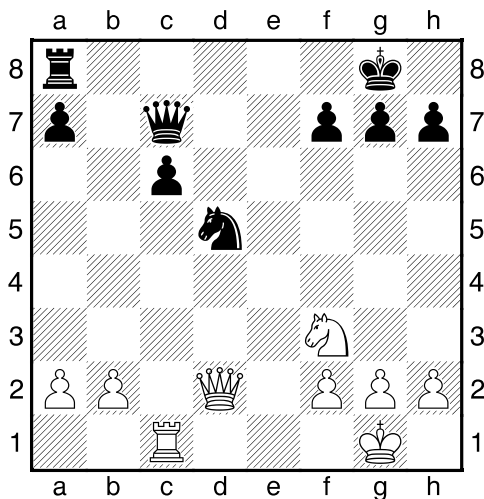
Bílý na tahu



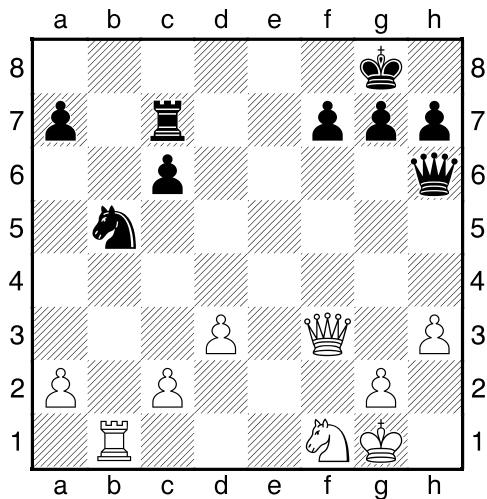
Bílý na tahu



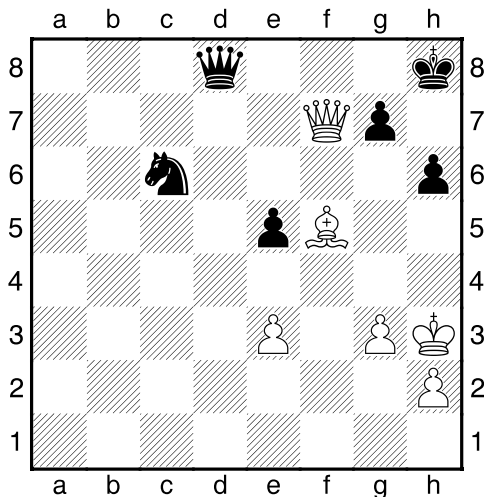
Bílý na tahu



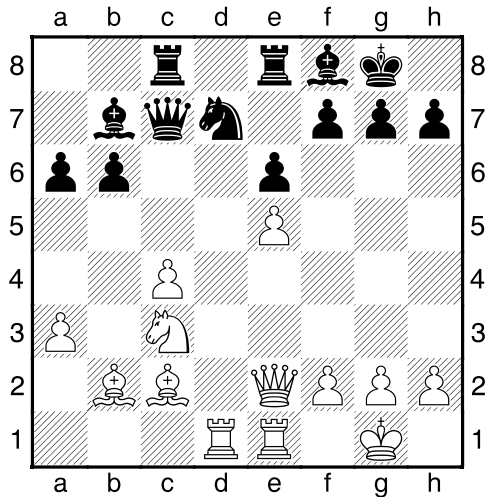
Bílý na tahu



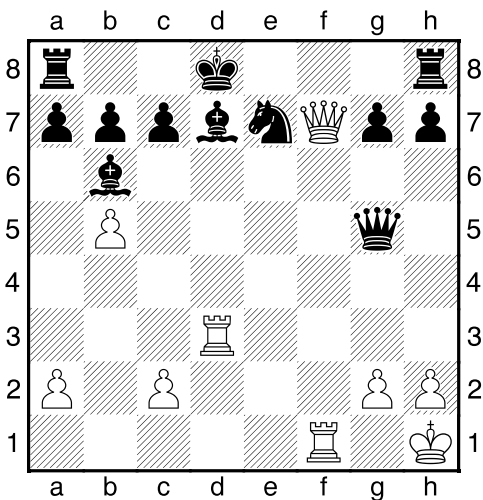
Bílý na tahu



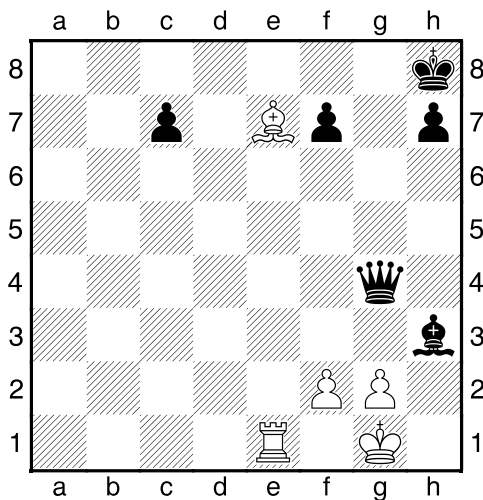
Bílý na tahu



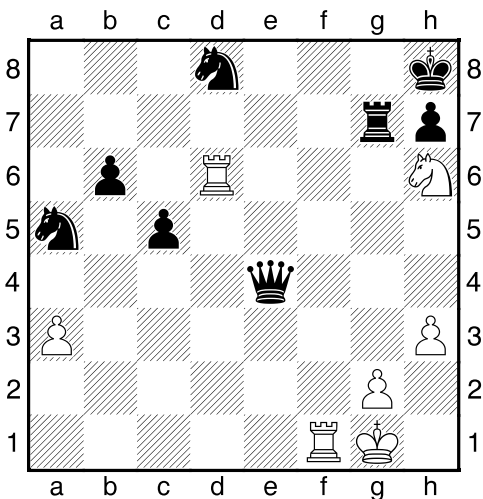
Bílý na tahu



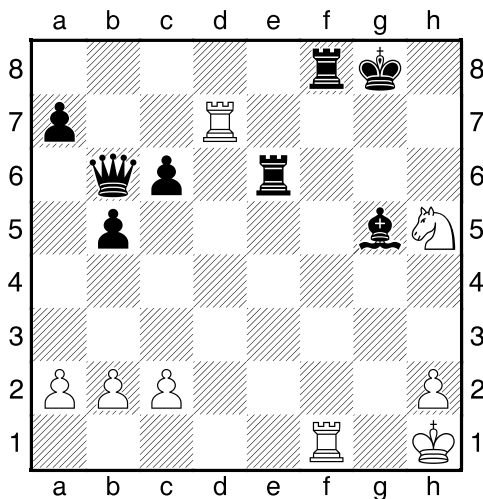
Bílý na tahu



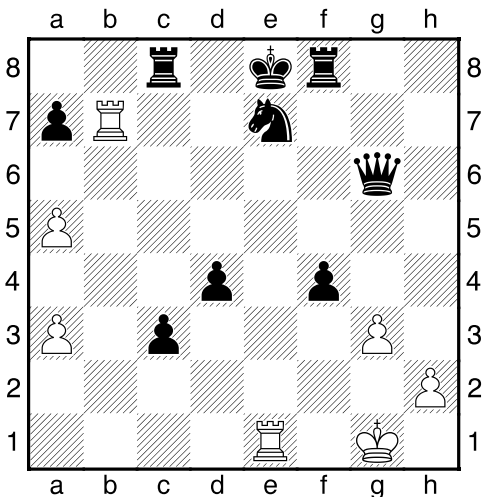
Bílý na tahu



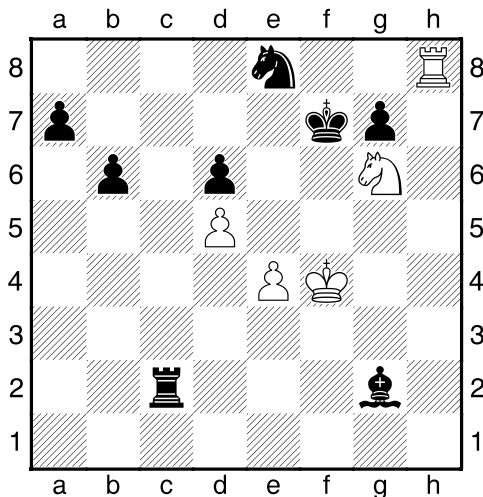
Bílý na tahu



Bílý na tahu

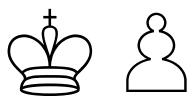


Bílý na tahu

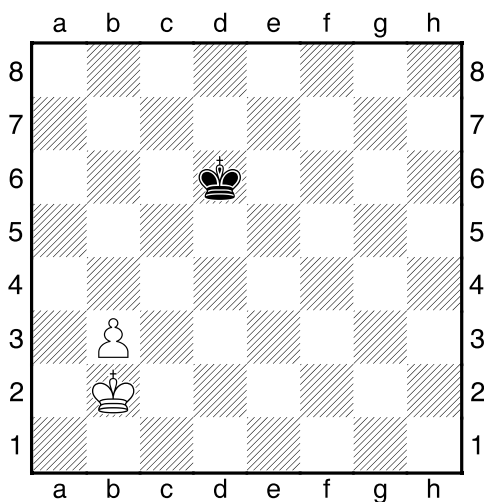


HRADIŠTĚ C, DÚ01, 06.09.2019
Boj o kritická pole b-g – prostřední VI
(ŠK Biolk 007,3)

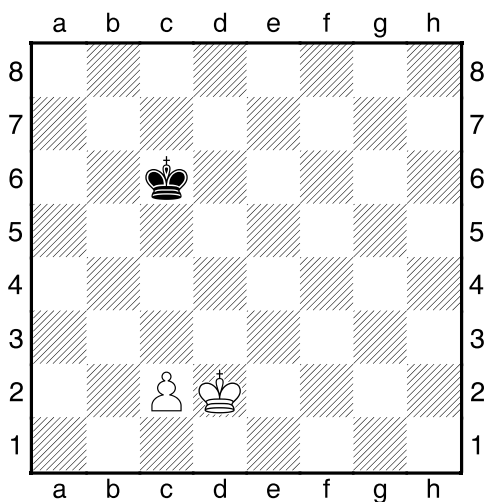
!!! Pod každý diagram napište první tah a jak partie dopadne !!!
(navíc můžete v diagramech označit KP)
třetí strana ze tří



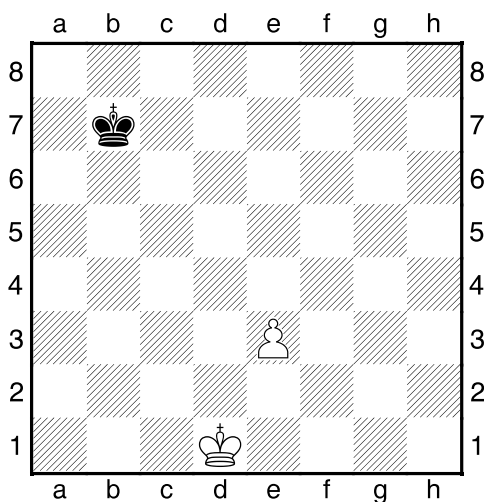
1. příklad Bílý na tahu



2. příklad Černý na tahu



3. příklad Bílý na tahu



4. příklad Černý na tahu

