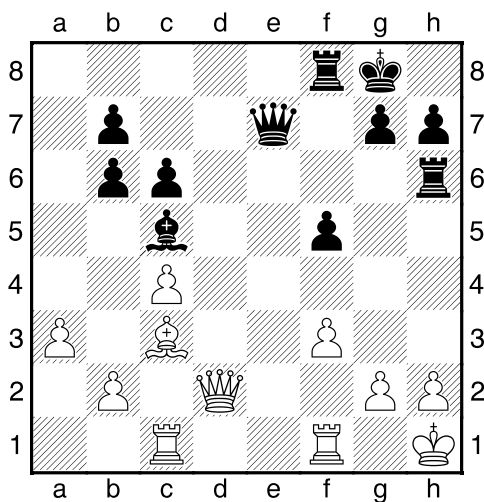
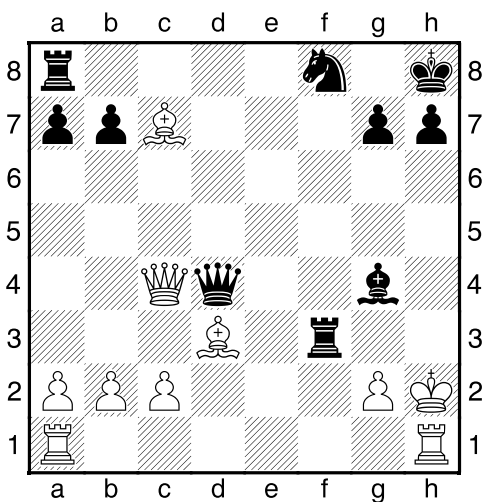


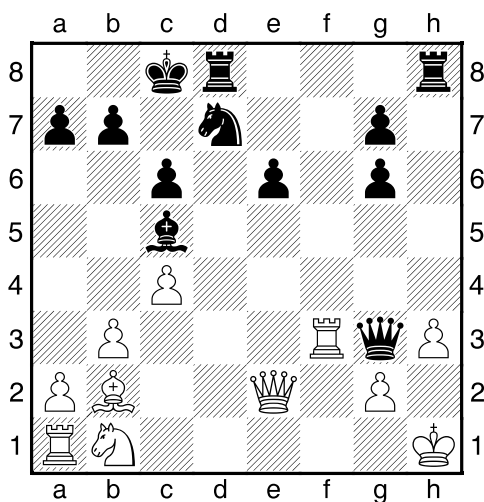
Černý na tahu



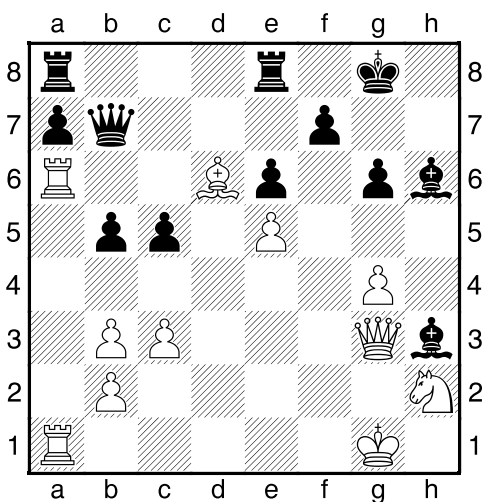
Černý na tahu



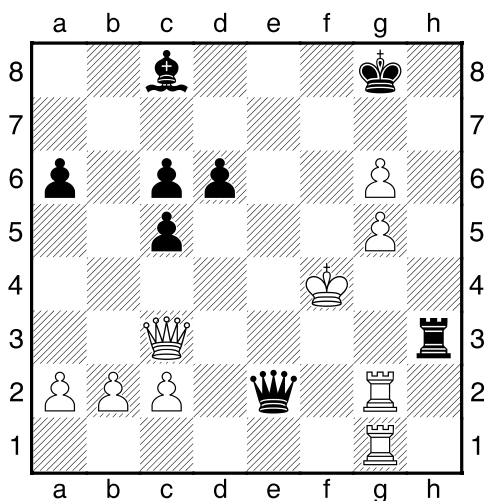
Černý na tahu



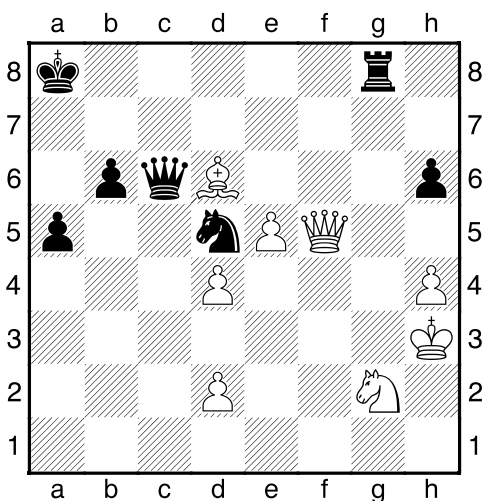
Černý na tahu



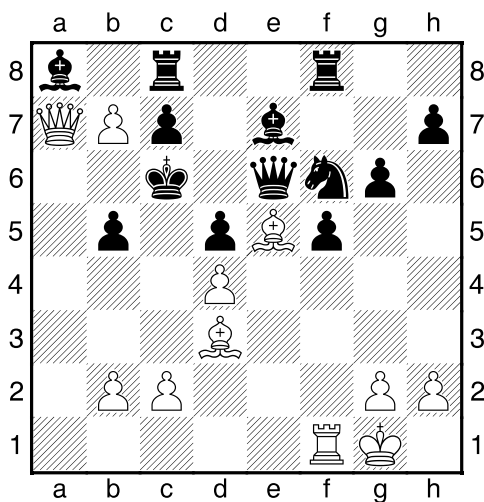
Černý na tahu



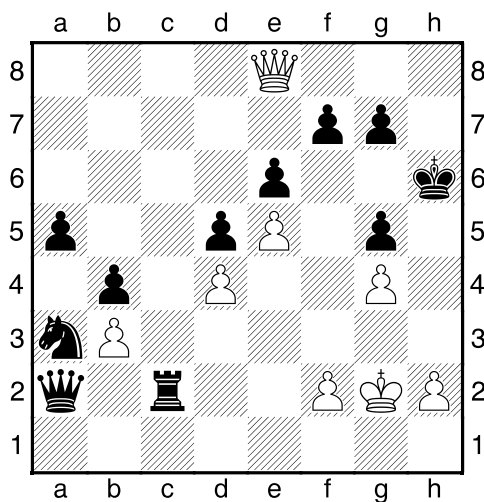
Černý na tahu



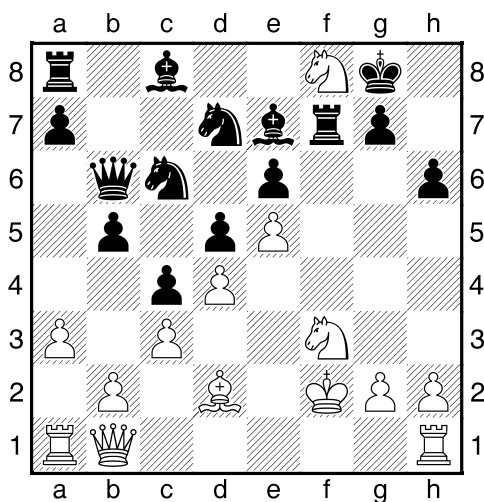
Bílý na tahu



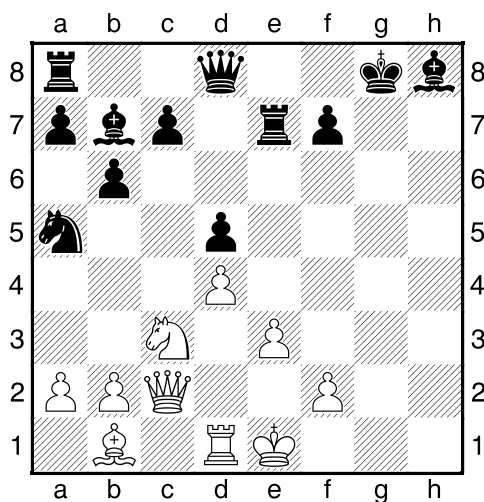
Bílý na tahu



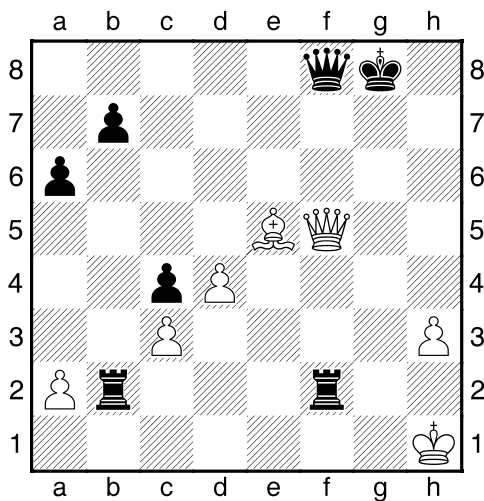
Bílý na tahu



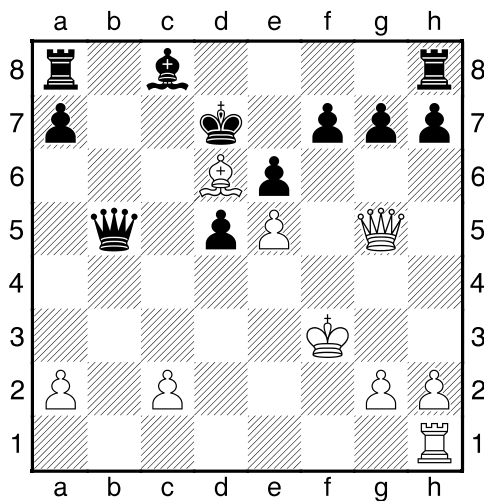
Bílý na tahu



Bílý na tahu



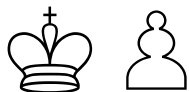
Bílý na tahu



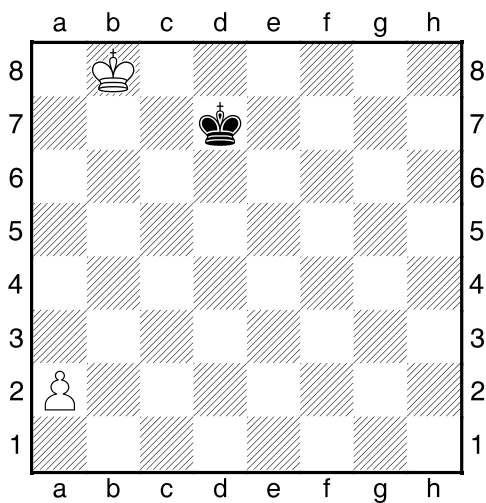
HRADIŠTĚ C DÚ08a 26.10.2020,
Taktika a koncovky
(ŠK Biolek 007,y)

!!! Pod každý diagram napište první tah a jak partie dopadne !!!

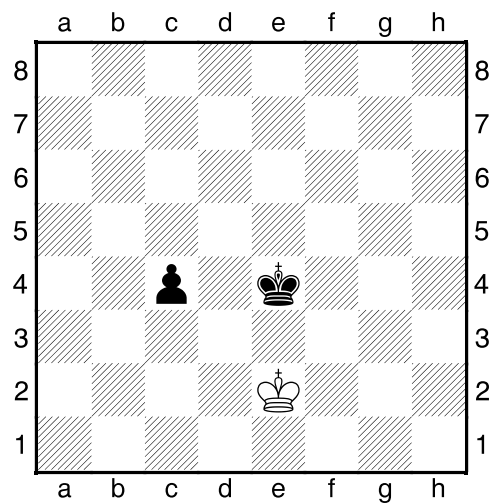
třetí strana ze tří



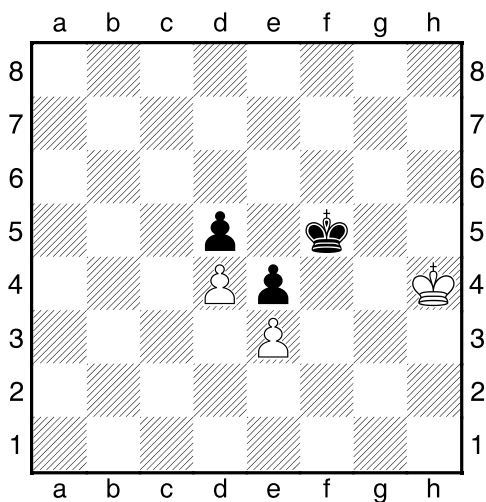
1.příklad Bílý na tahu



2.příklad Černý na tahu



3.příklad Černý na tahu



4.příklad Bílý na tahu

