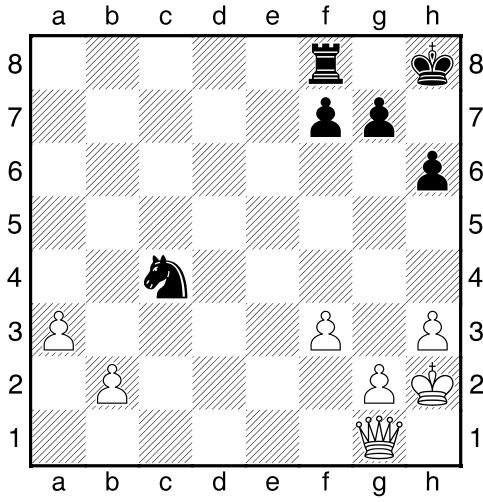
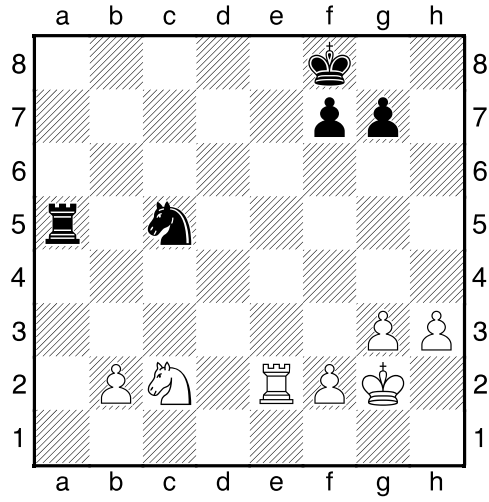


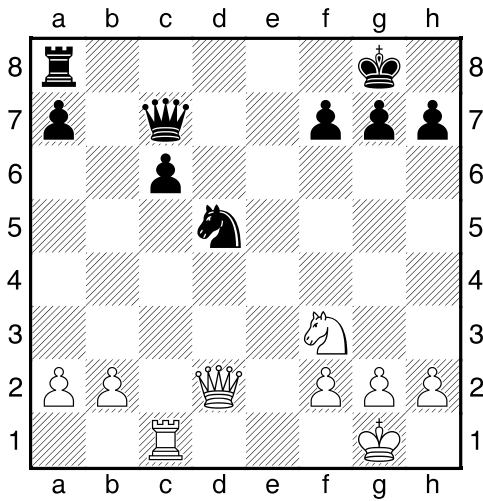
Bílý na tahu



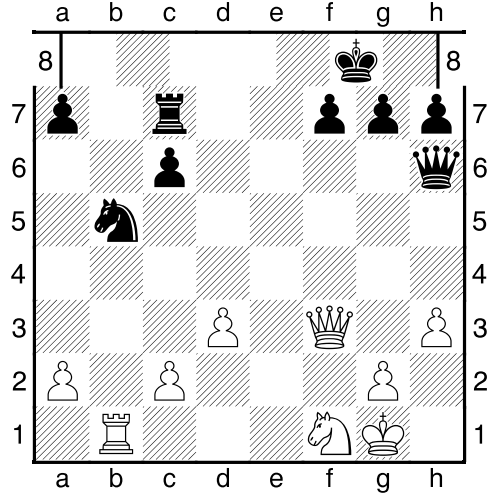
Bílý na tahu



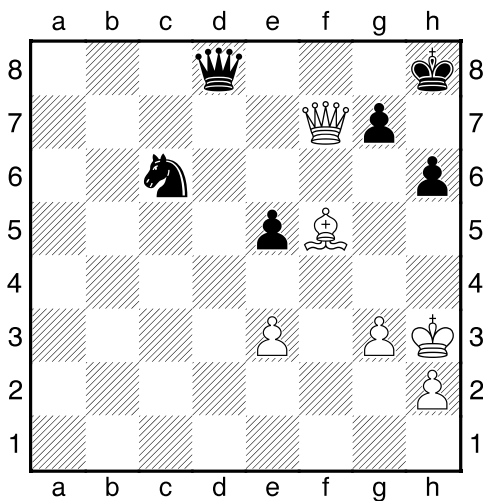
Bílý na tahu



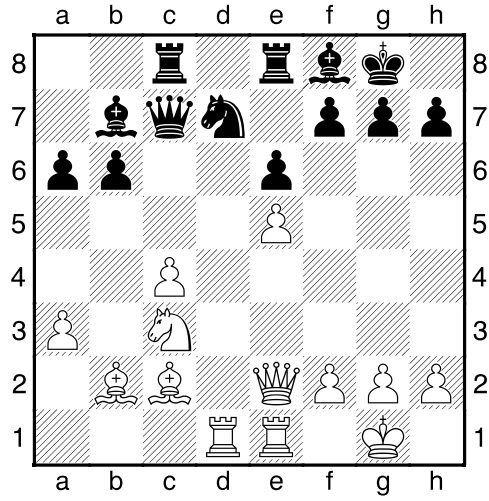
Bílý na tahu



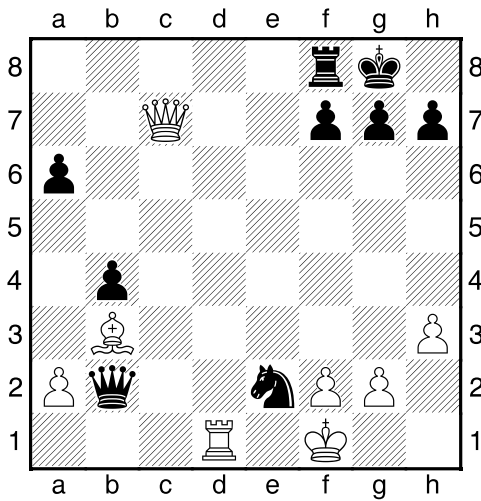
Bílý na tahu



Bílý na tahu

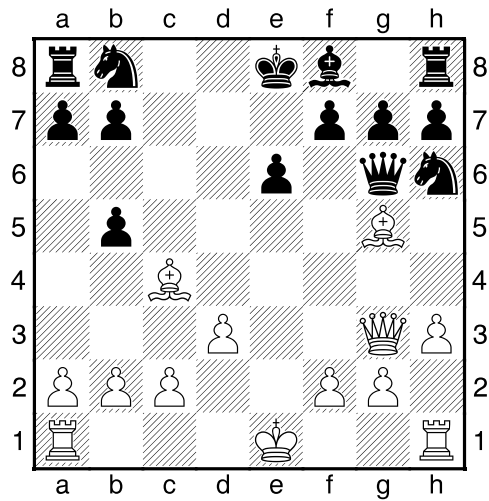


Bílý na tahu



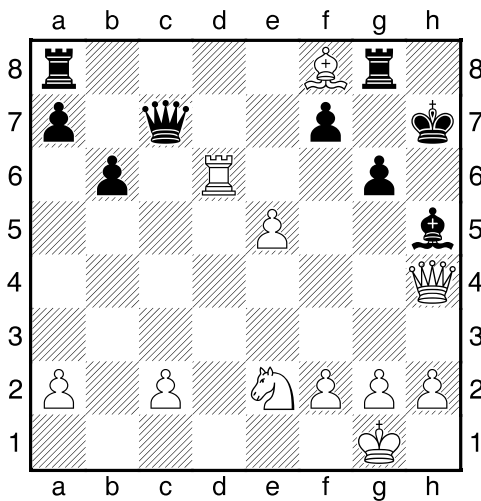
NÁPOVĚDA: 1.Dxf7+ 2.

Bílý na tahu



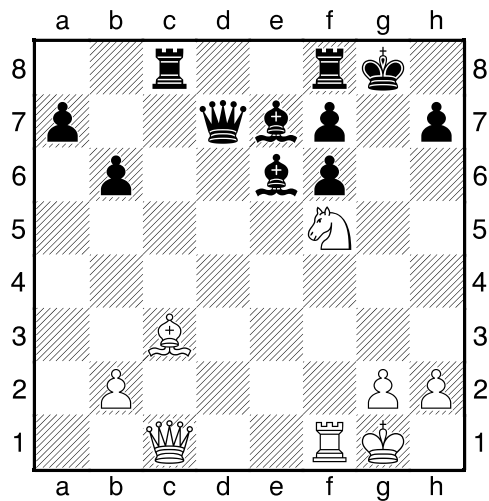
NÁPOVĚDA: 1.Dxb8+ 2.

Bílý na tahu



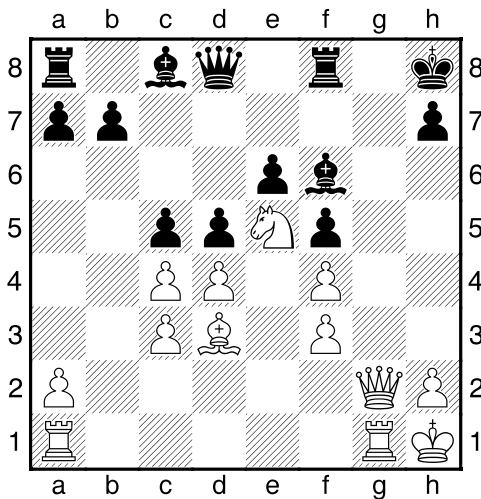
NÁPOVĚDA: 1.Dxh5+ 2.

Bílý na tahu



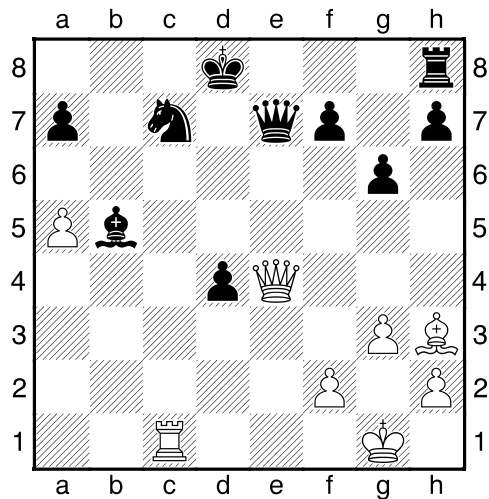
NÁPOVĚDA: 1.Dg5+ 2.

Bílý na tahu



NÁPOVĚDA: 1.Dg8+ 2.

Bílý na tahu



NÁPOVĚDA: 1.Da8+ 2.