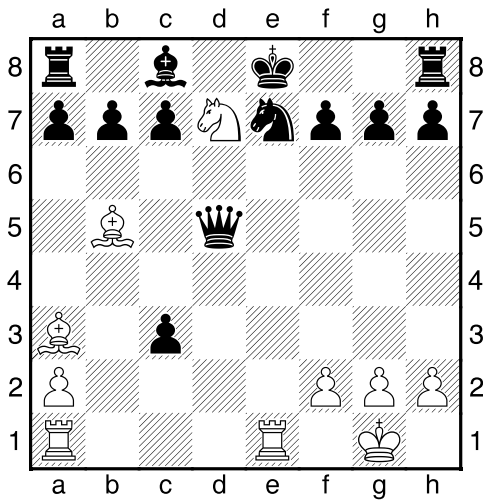
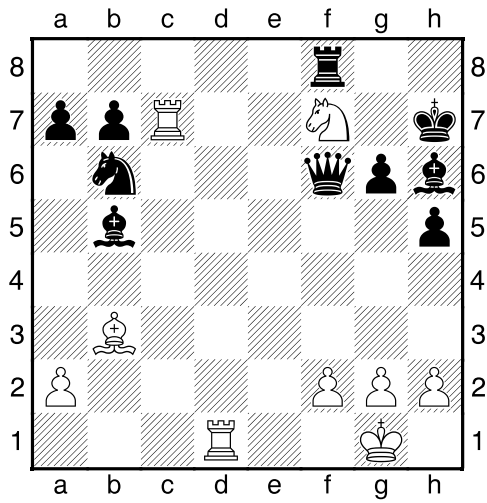


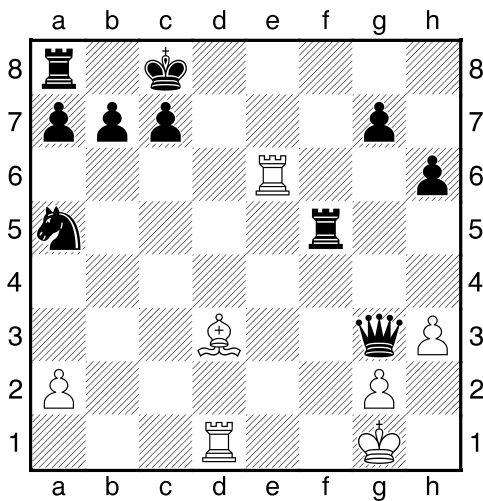
Bílý na tahu



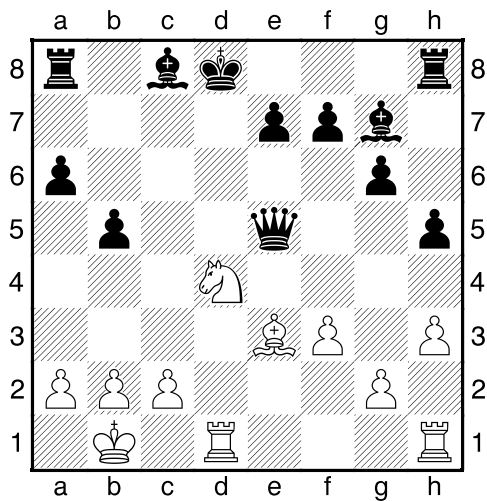
Bílý na tahu



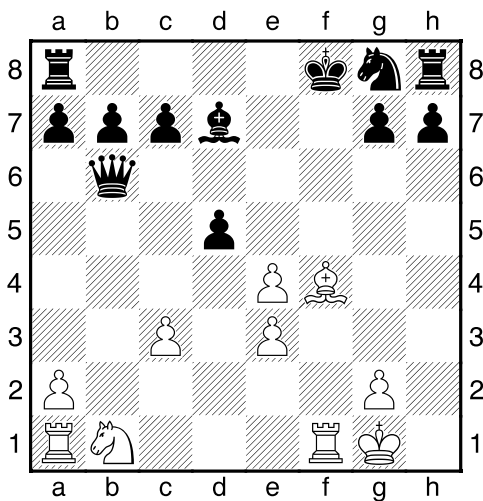
Bílý na tahu



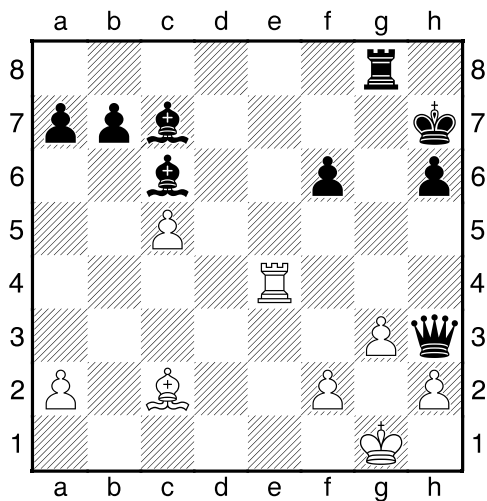
Bílý na tahu



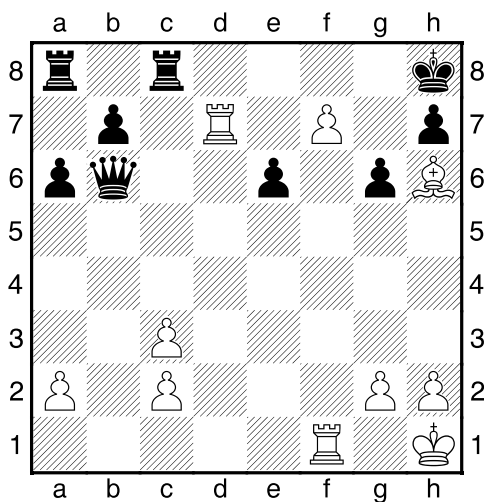
Bílý na tahu



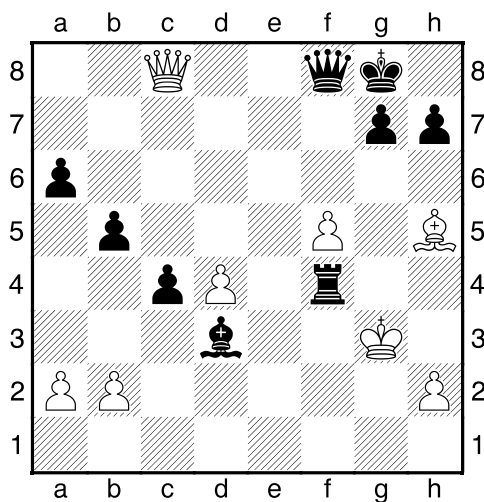
Bílý na tahu



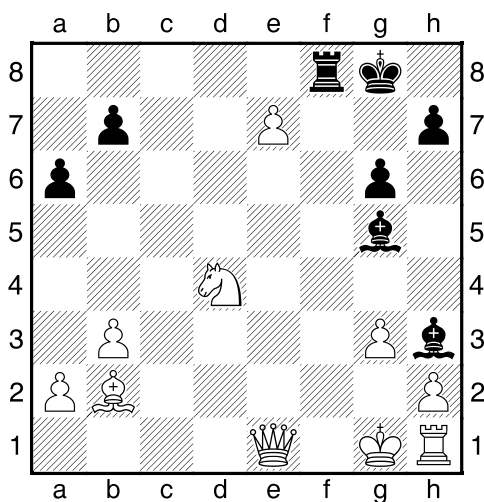
Bílý na tahu



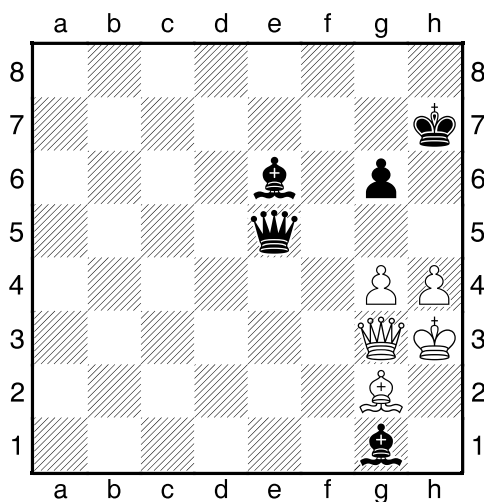
Bílý na tahu



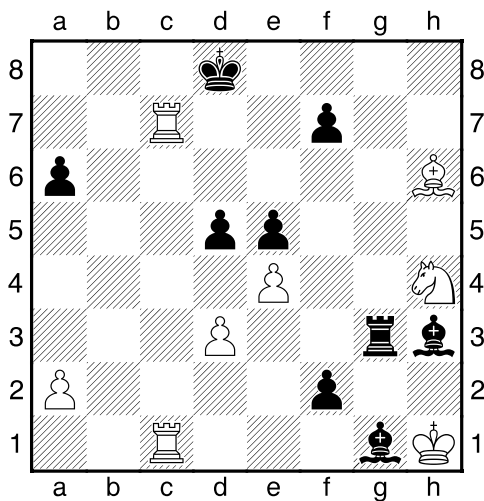
Černý na tahu



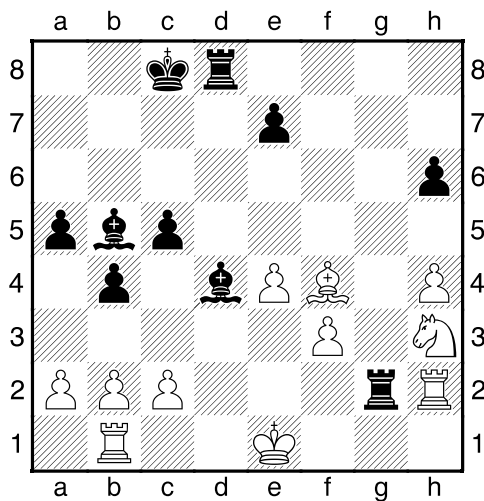
Černý na tahu



Černý na tahu

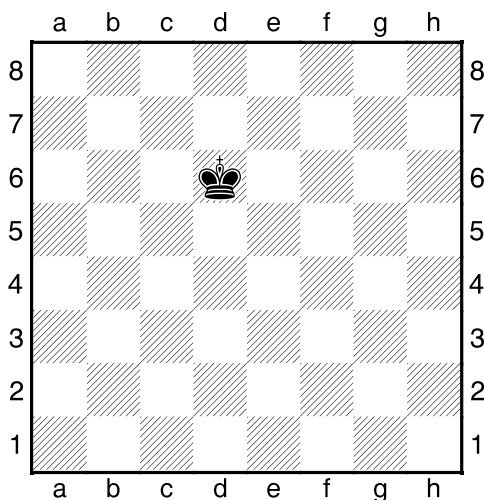


Černý na tahu



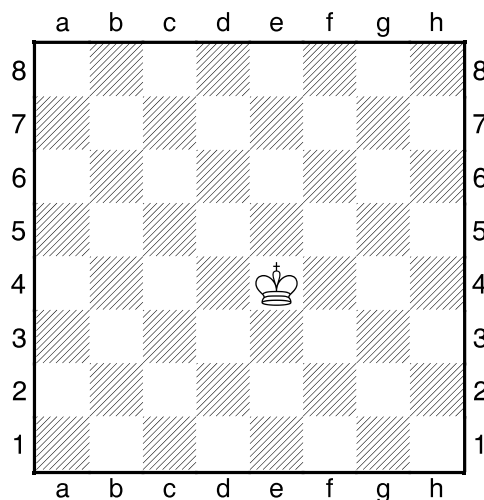


1.příklad Cvičná pozice



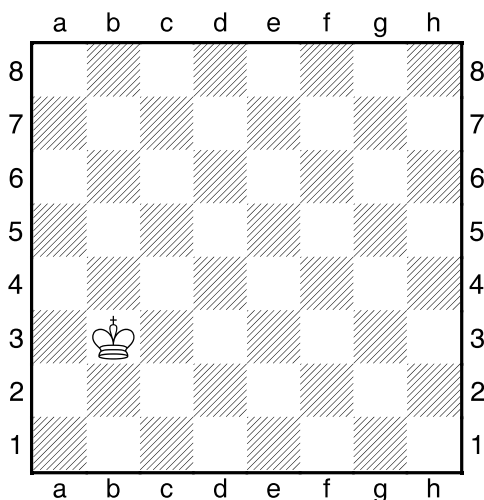
Na kterých polích bude
blízká opozice?

2.příklad Cvičná pozice



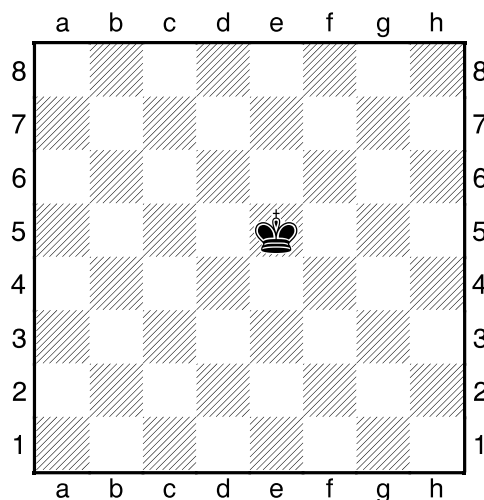
Na kterých polích bude
blízká opozice?

3.příklad Cvičná pozice



Na kterých polích bude
vzdálená opozice?

4.příklad Cvičná pozice



Na kterých polích bude
diagonální opozice?