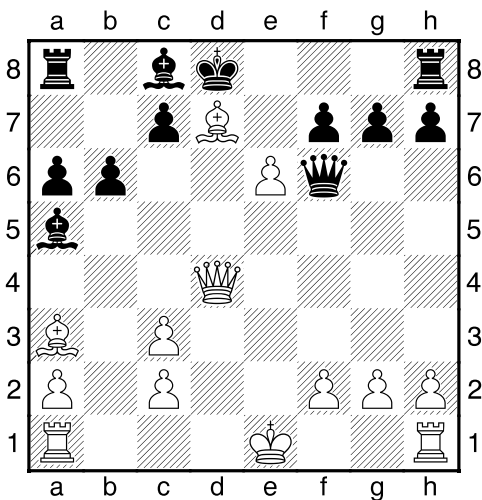
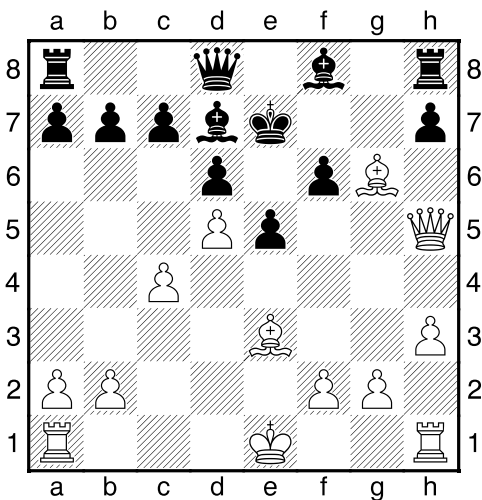


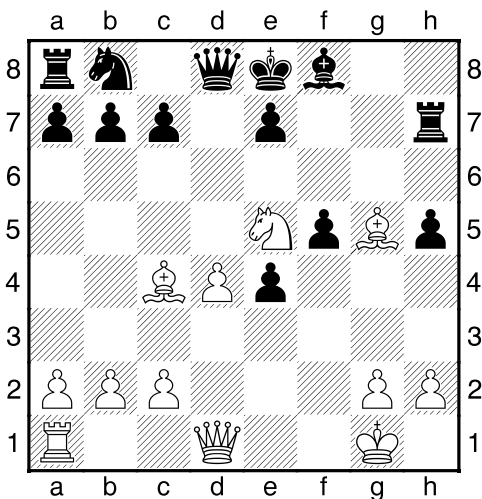
Bílý na tahu



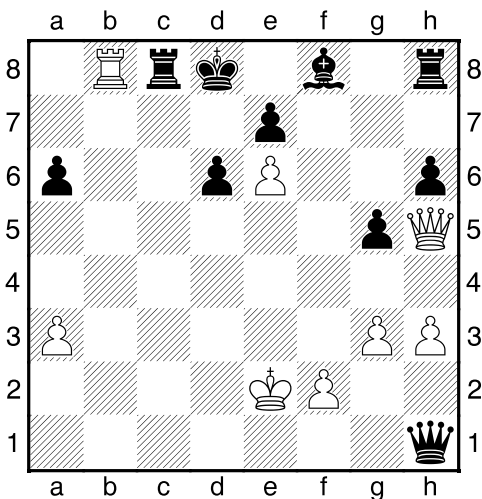
Bílý na tahu



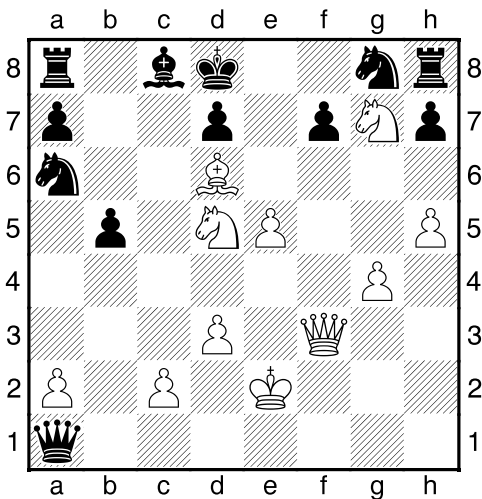
Bílý na tahu



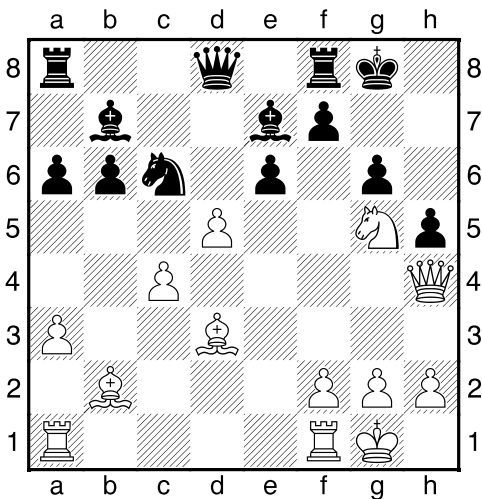
Bílý na tahu



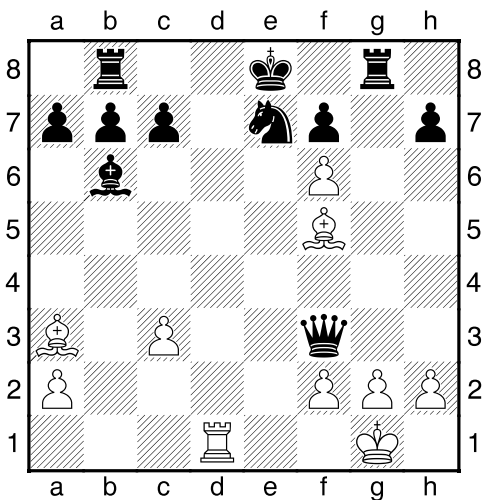
Bílý na tahu



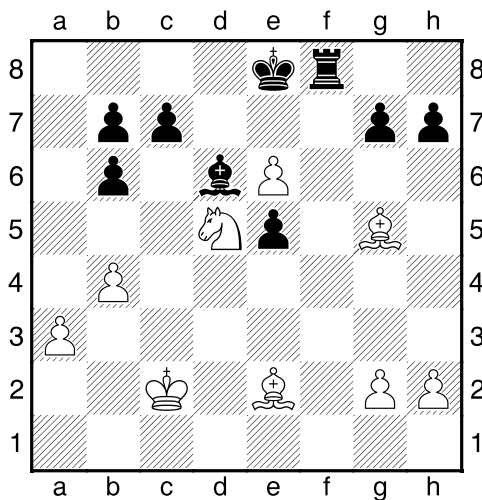
Bílý na tahu



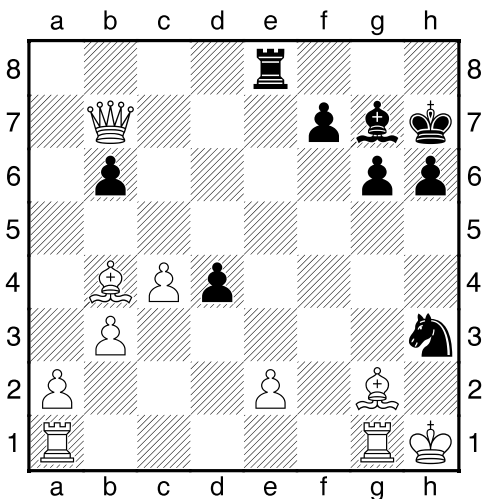
Bílý na tahu



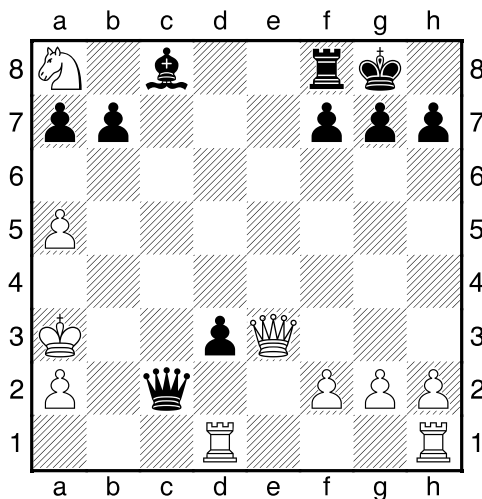
Bílý na tahu



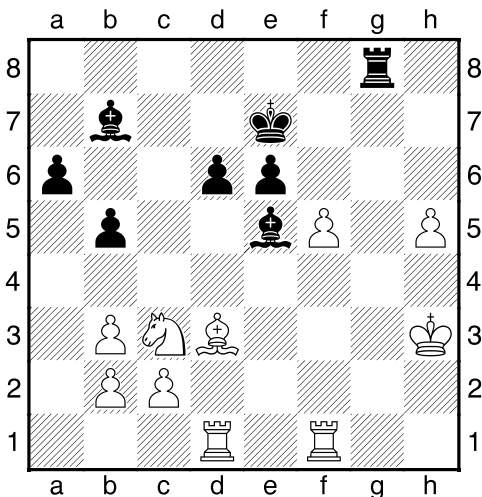
Černý na tahu



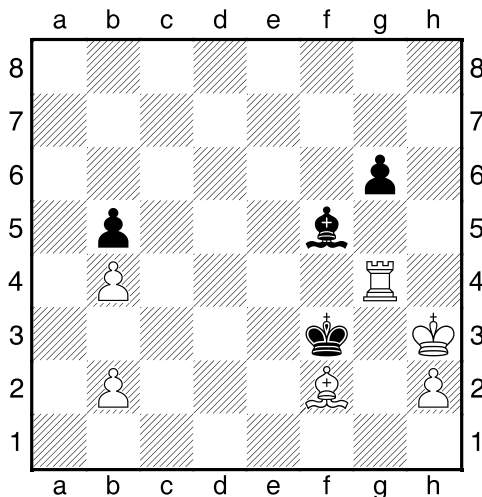
Černý na tahu



Černý na tahu



Černý na tahu



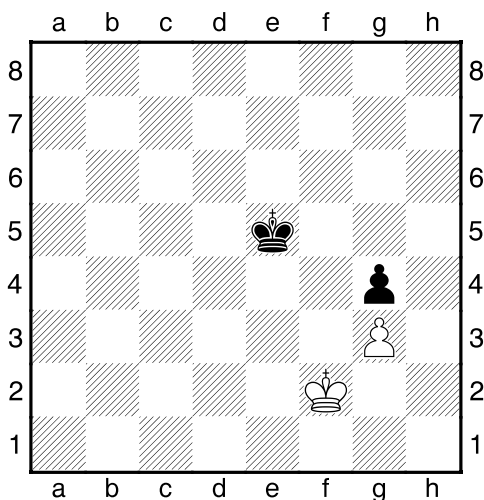
**HRADIŠTĚ C, DÚ12a, 24.11.2017,**  
**Taktika + koncovky mix**  
 (ŠK Biolek 007,x)

**!!! Pod každý diagram napište první tah a jak partie dopadne !!!**

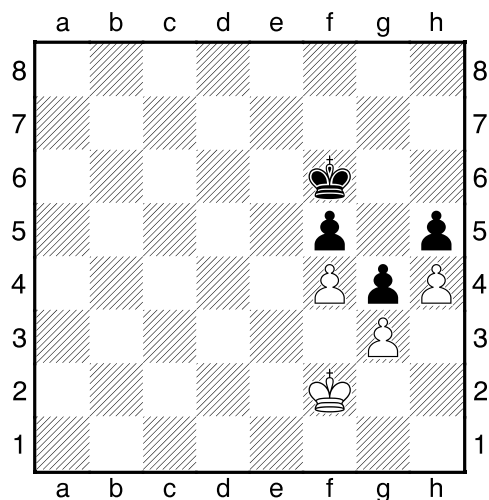
**třetí strana ze tří**



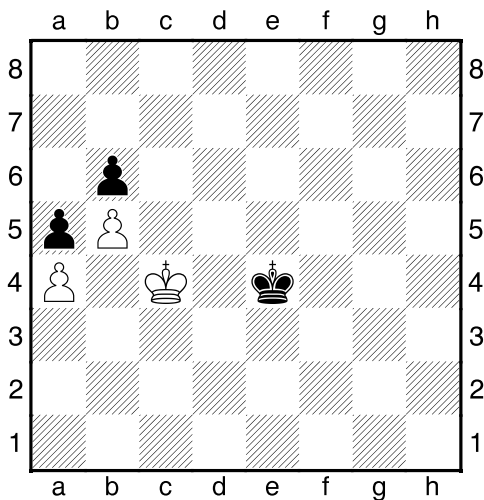
1.příklad Černý na tahu



2.příklad Bílý na tahu



3.příklad Bílý na tahu



4.příklad Bílý na tahu

