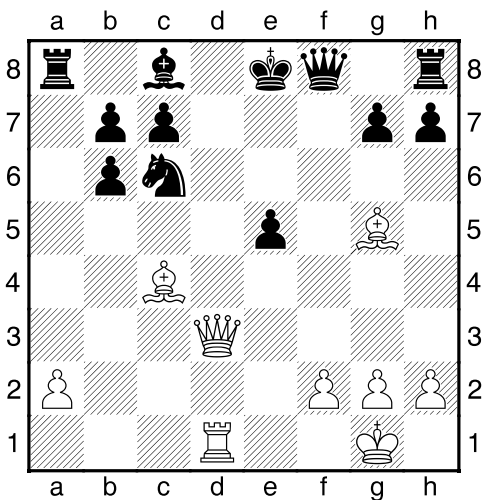
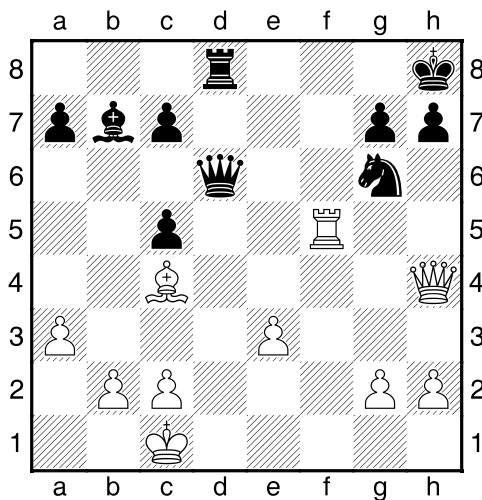


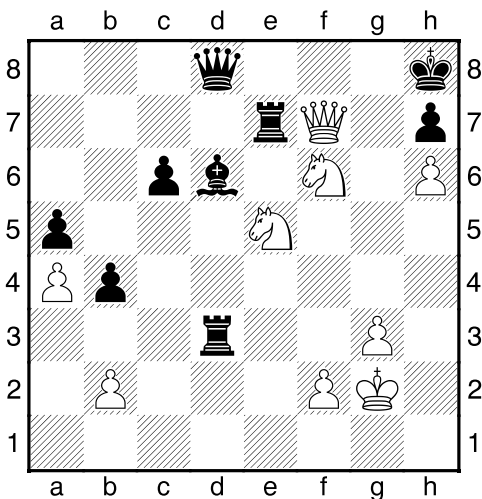
Bílý na tahu



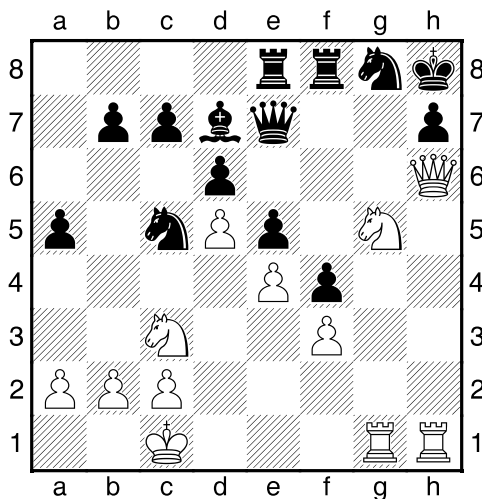
Bílý na tahu



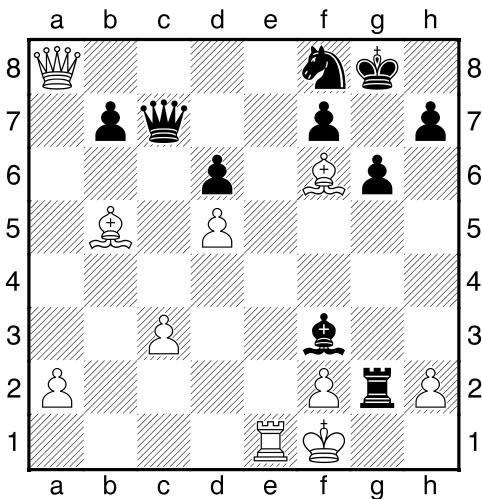
Bílý na tahu



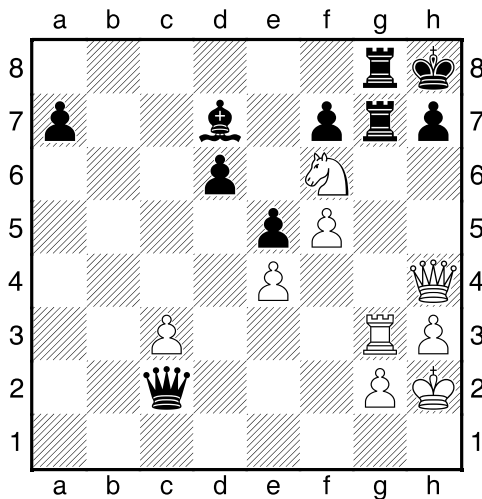
Bílý na tahu



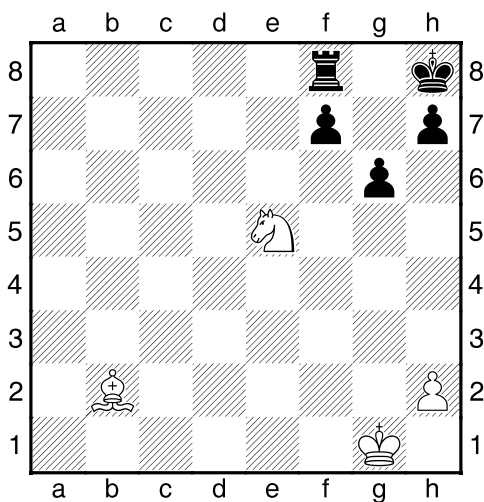
Bílý na tahu



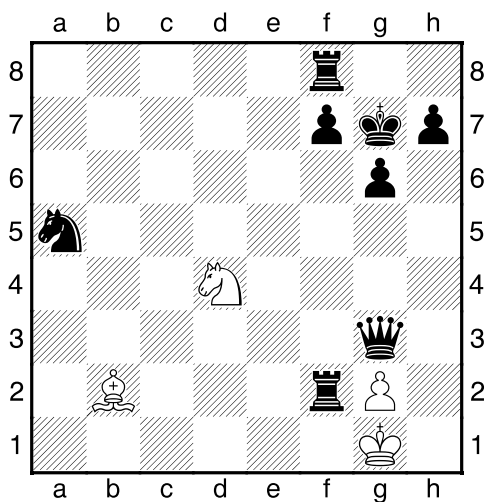
Bílý na tahu



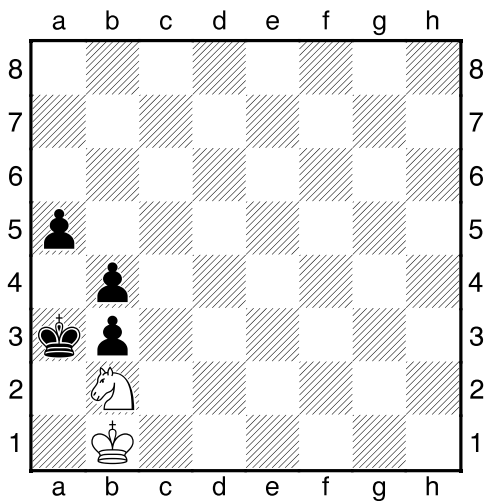
Bílý na tahu



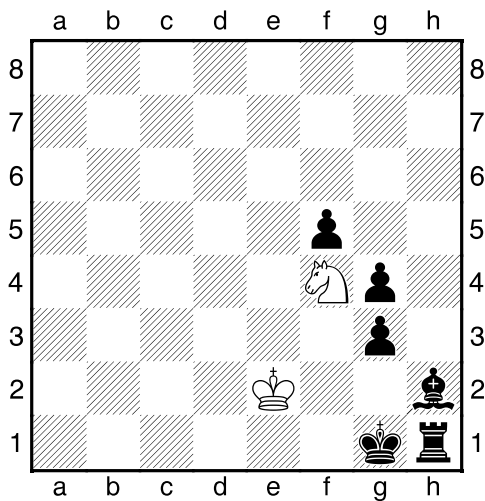
Bílý na tahu



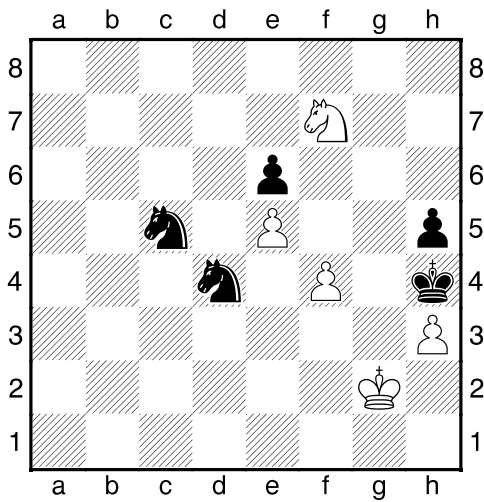
Bílý na tahu



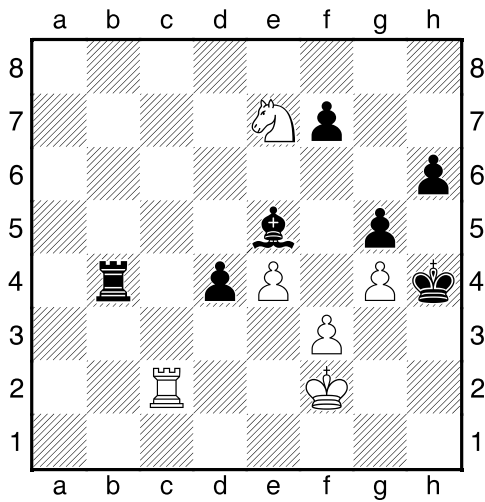
Bílý na tahu



Bílý na tahu

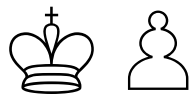


Bílý na tahu

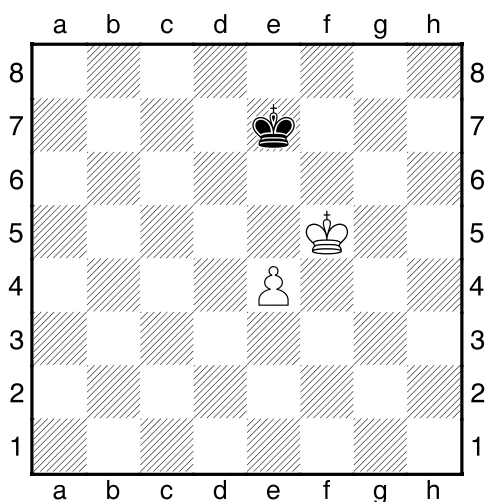


HRADIŠTĚ C, DÚ18a, 12.01.2018,
Taktika + koncovky mix
(ŠK Biolek 007,3)

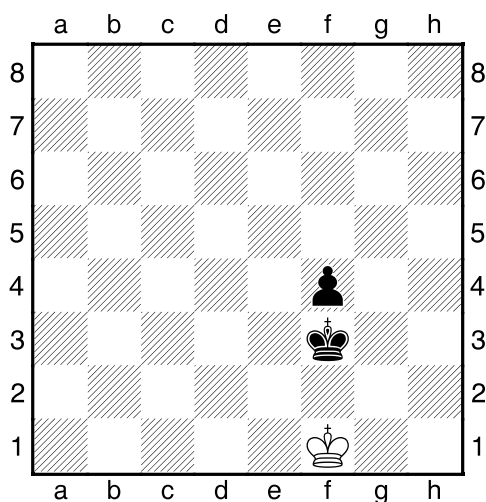
!!! Pod každý diagram napište první tah a jak partie dopadne !!!
(navíc můžete v diagramech označit KP)
třetí strana ze tří



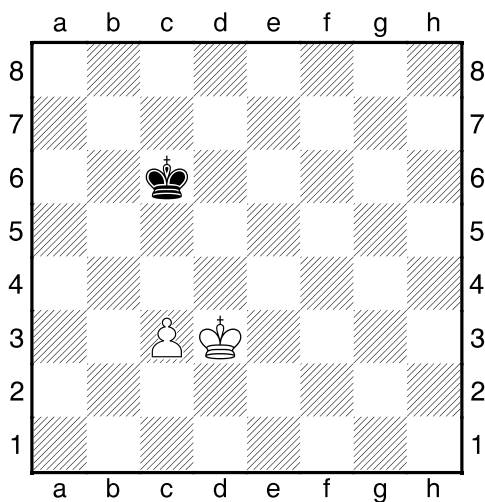
1.příklad Černý na tahu



2.příklad Černý na tahu



3.příklad Bílý na tahu



4.příklad Bílý na tahu

