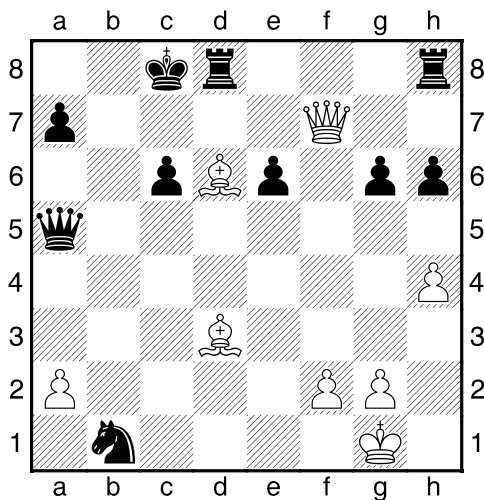
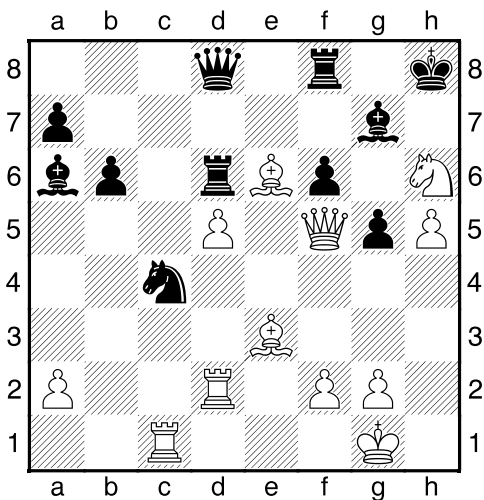


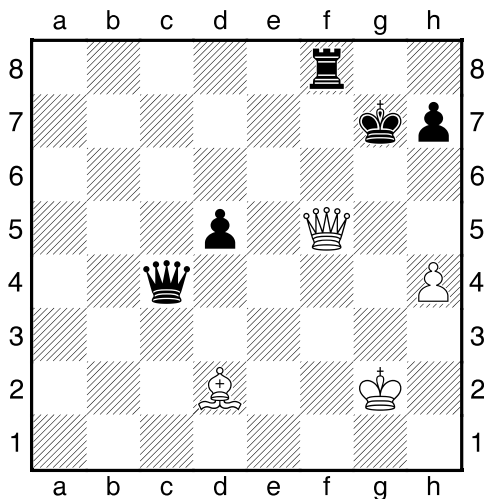
Bílý na tahu



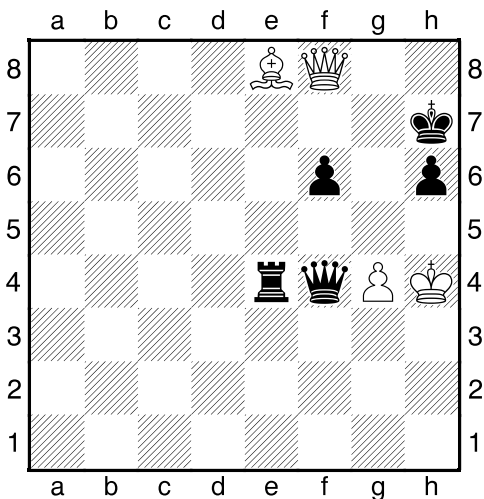
Bílý na tahu



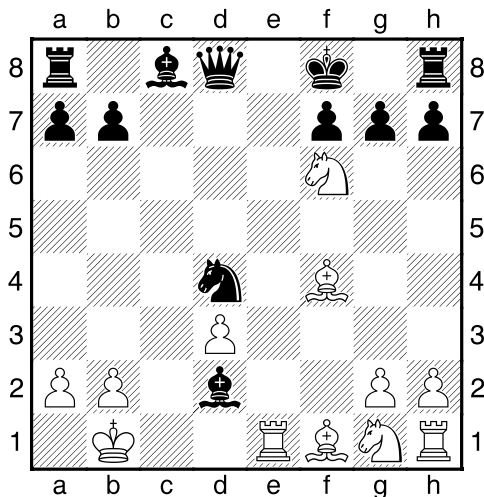
Bílý na tahu



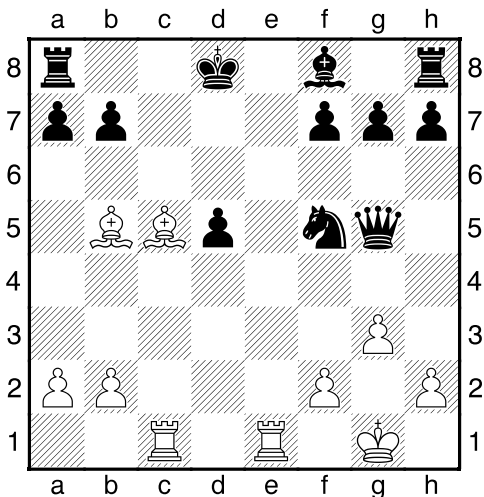
Bílý na tahu



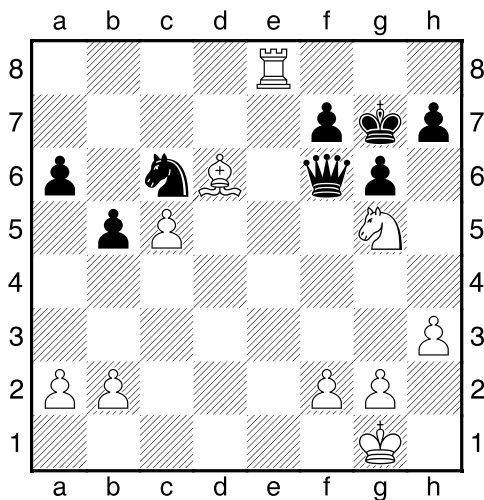
Bílý na tahu



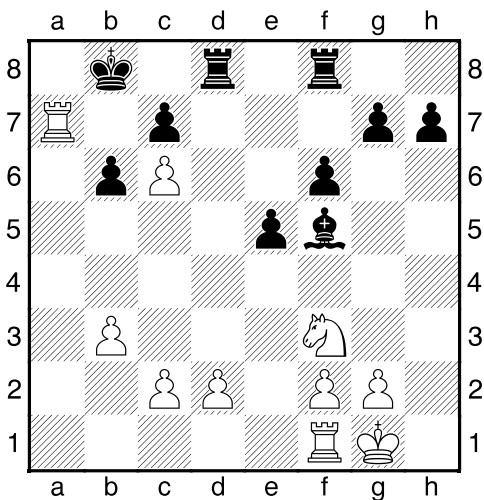
Bílý na tahu



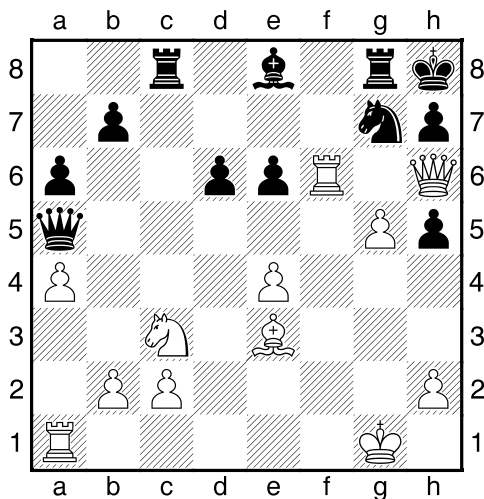
Bílý na tahu



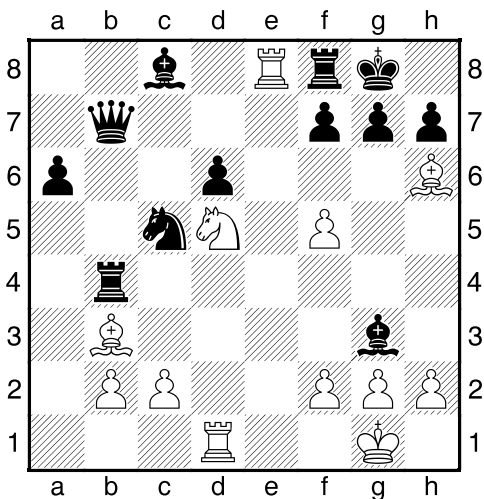
Bílý na tahu



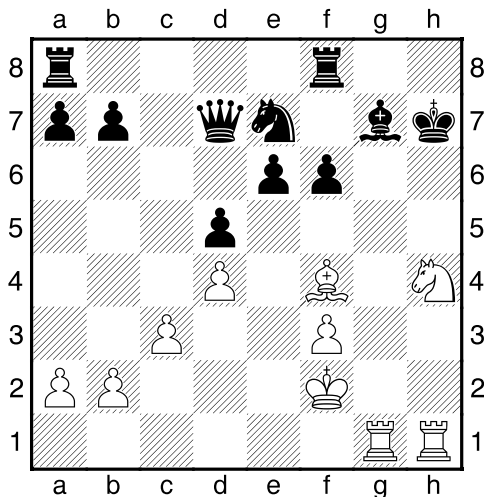
Bílý na tahu



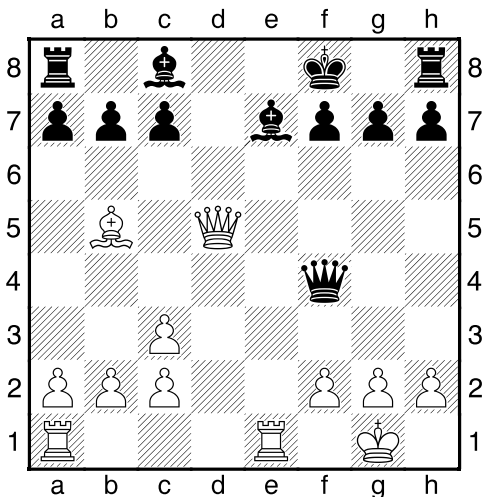
Bílý na tahu



Bílý na tahu



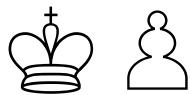
Bílý na tahu



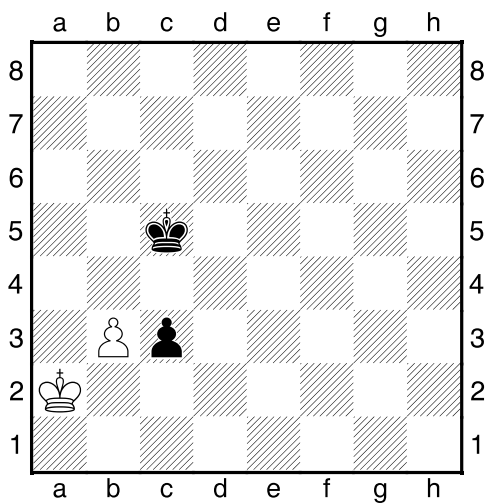
HRADIŠTĚ C DÚ18a 18.01.2021,
Taktika a koncovky
(ŠK Biolek 008,2)

!!! Pod každý diagram napište první tah a jak partie dopadne !!!

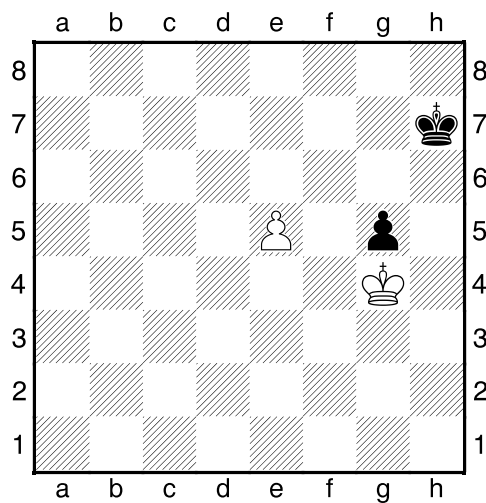
třetí strana ze tří



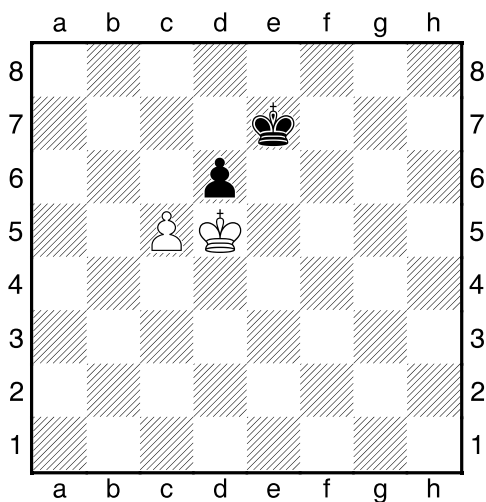
1.příklad Černý na tahu



2.příklad Bílý na tahu



3.příklad Bílý na tahu



4.příklad Černý na tahu

