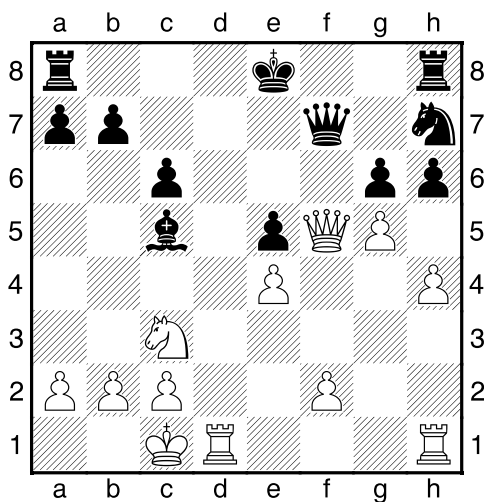
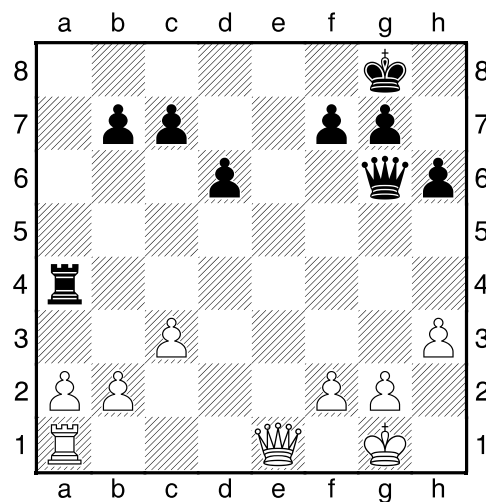


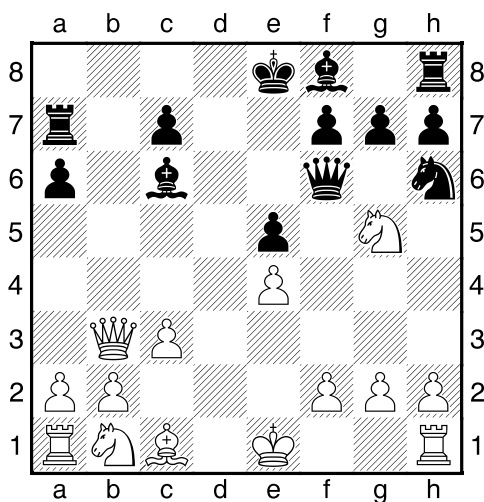
Bílý na tahu



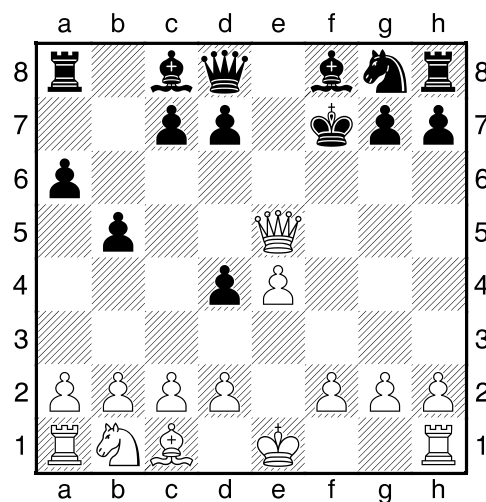
Bílý na tahu



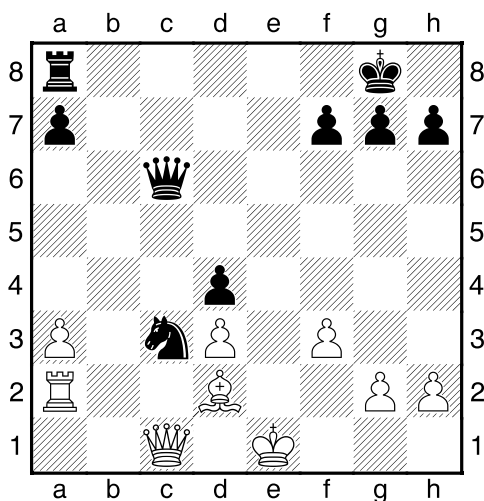
Bílý na tahu



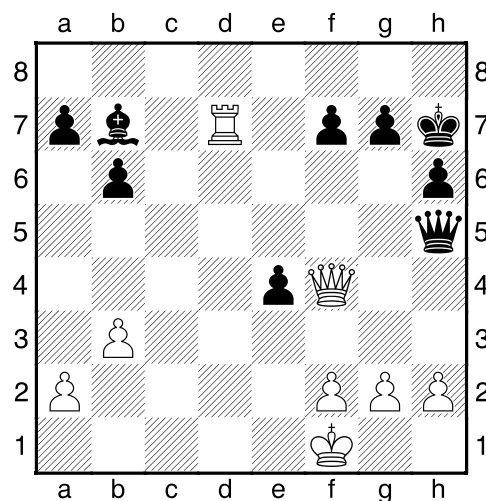
Bílý na tahu



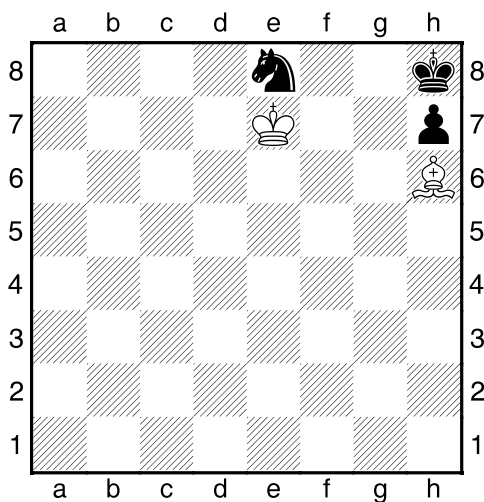
Černý na tahu



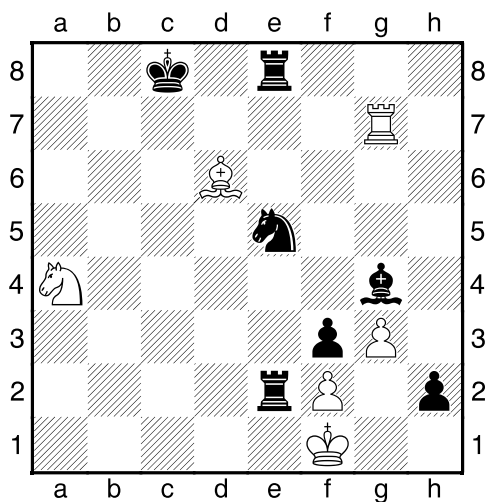
Černý na tahu



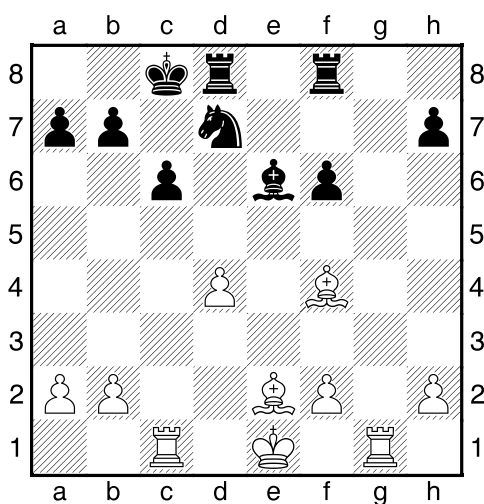
Bílý na tahu



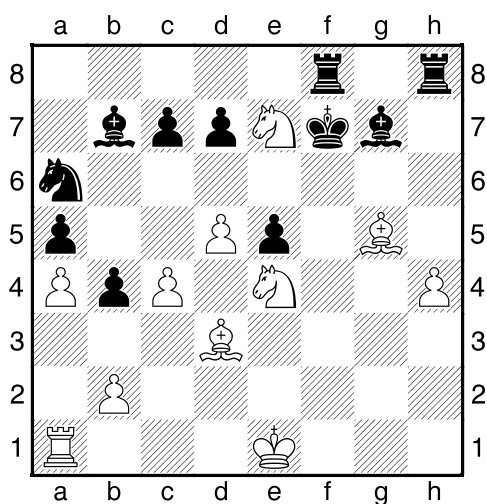
Bílý na tahu



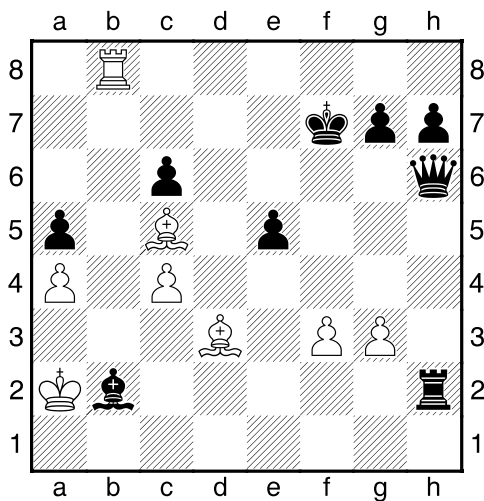
Bílý na tahu



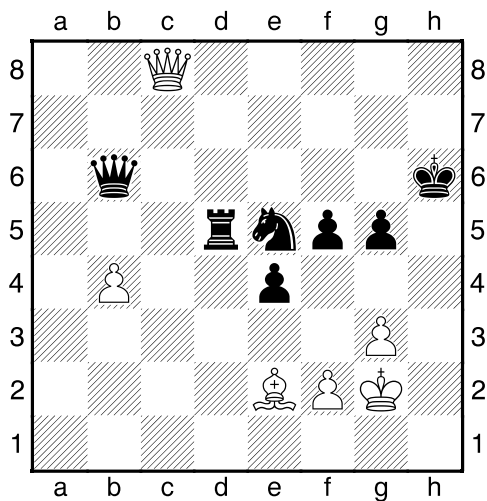
Bílý na tahu



Bílý na tahu

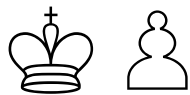


Bílý na tahu

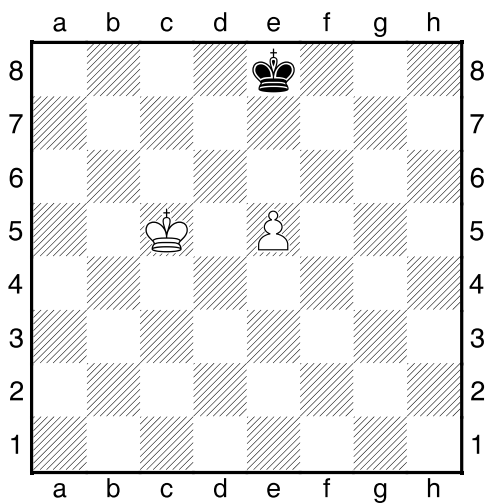


**HRADIŠTĚ C, DÚ19a, 25.01.2019,**  
**Taktika a koncovky**  
(ŠK Biolek 007,3)

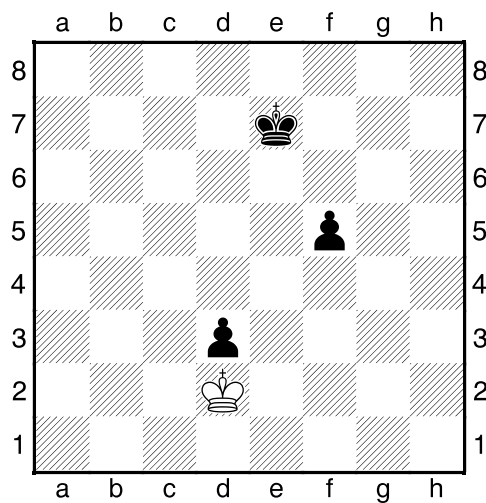
**!!! Pod každý diagram napište první tah a jak partie dopadne !!!**  
(navíc můžete v diagramech označit KP)  
**strana 3/3**



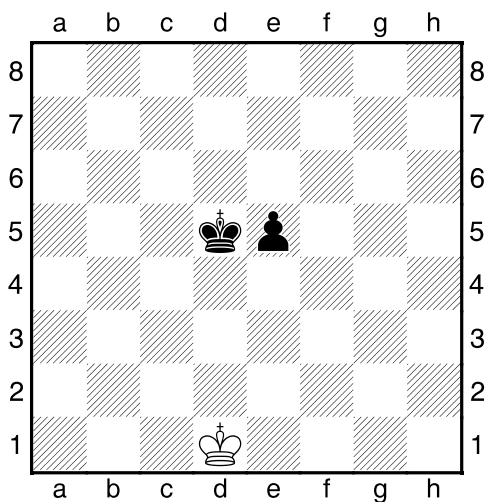
1.příklad Bílý na tahu



2.příklad Bílý na tahu



3.příklad Bílý na tahu



4.příklad Černý na tahu

