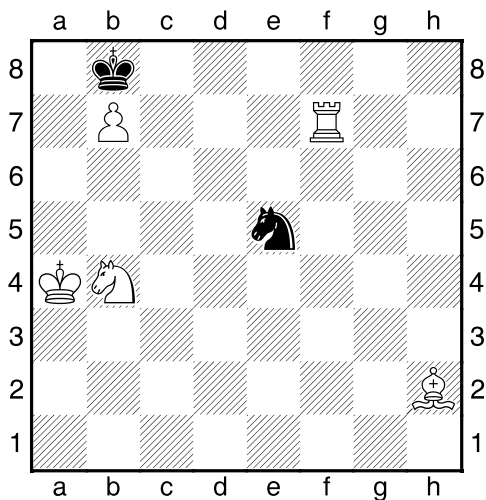
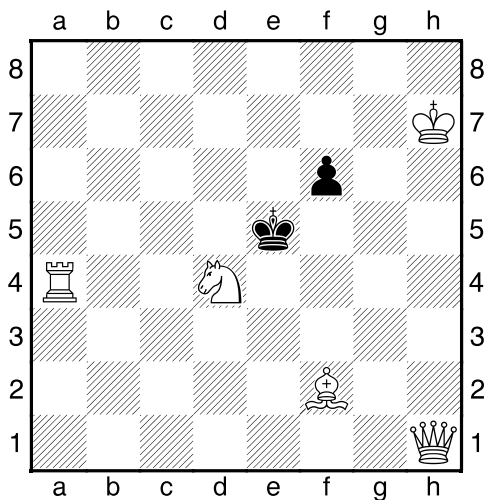


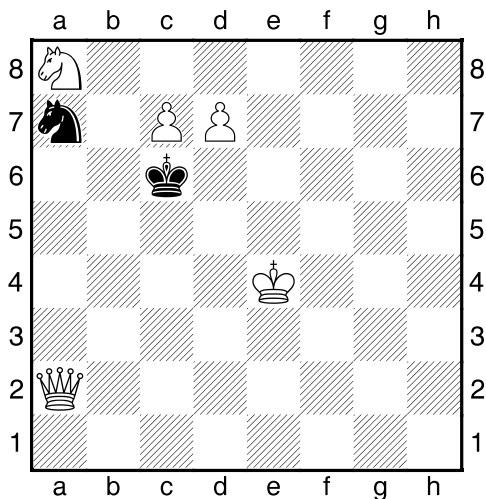
Bílý na tahu



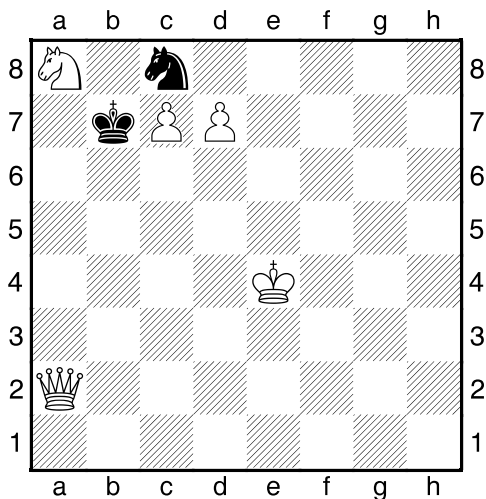
Bílý na tahu



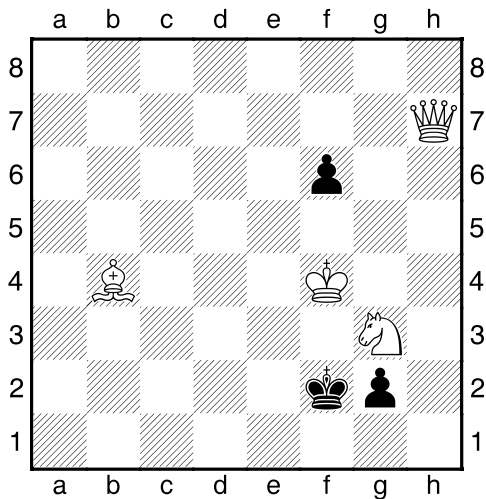
Bílý na tahu



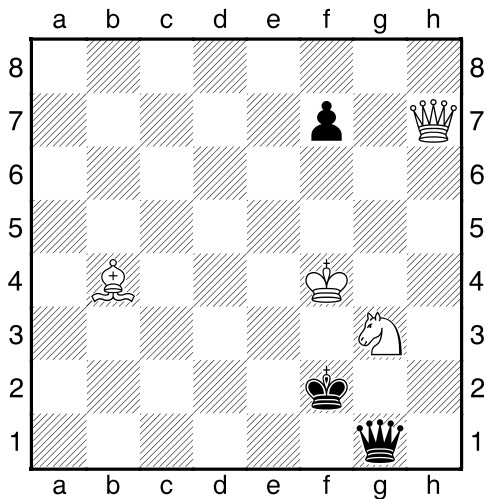
Bílý na tahu



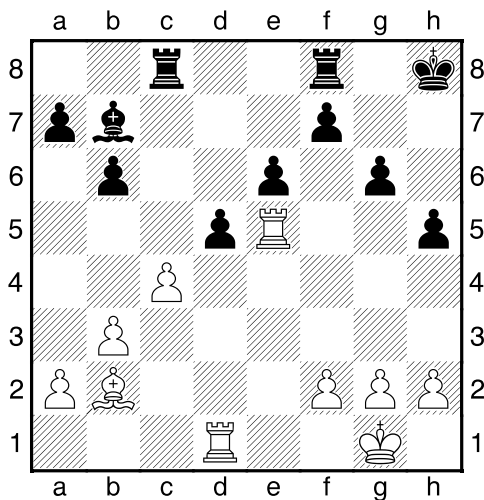
Bílý na tahu



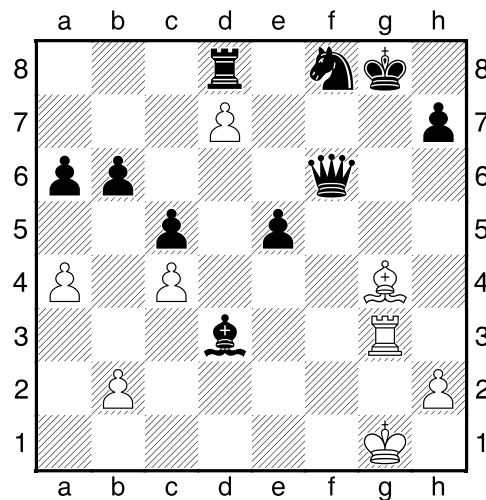
Bílý na tahu



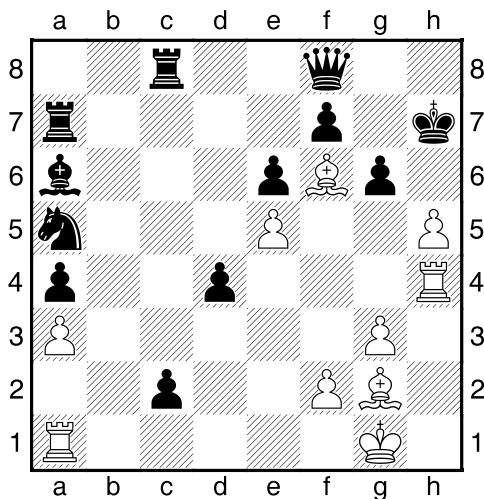
Bílý na tahu



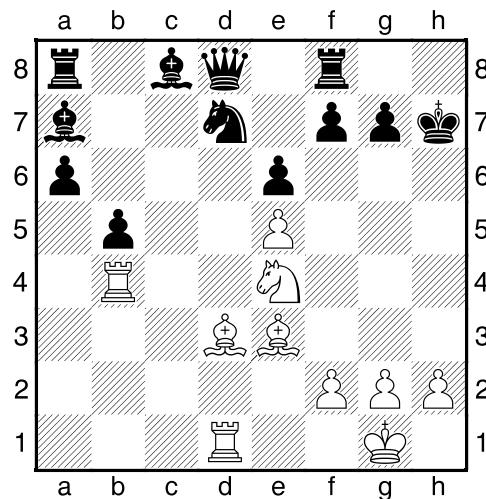
Bílý na tahu



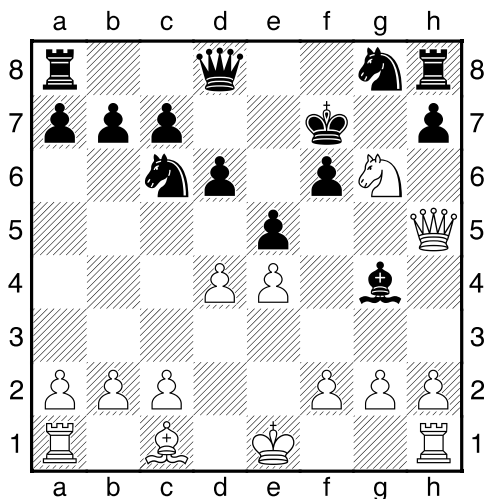
Bílý na tahu



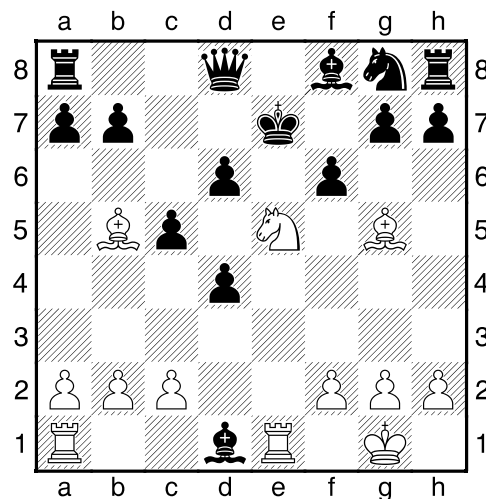
Bílý na tahu



Bílý na tahu



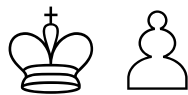
Bílý na tahu



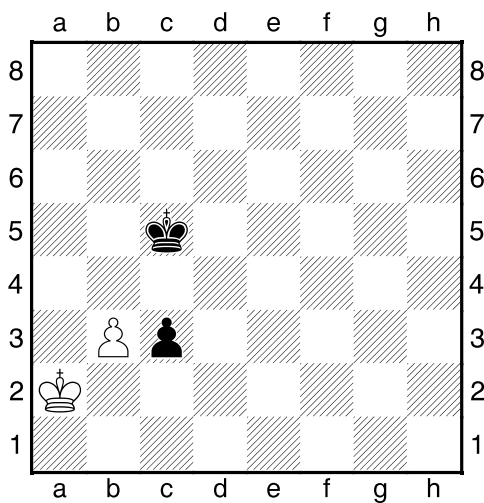
**HRADIŠTĚ C, DÚ35a, 17.05.2019,**  
**Taktika a koncovky**  
(ŠK Biolek 008,2)

**!!! Pod každý diagram napište první tah a jak partie dopadne !!!**

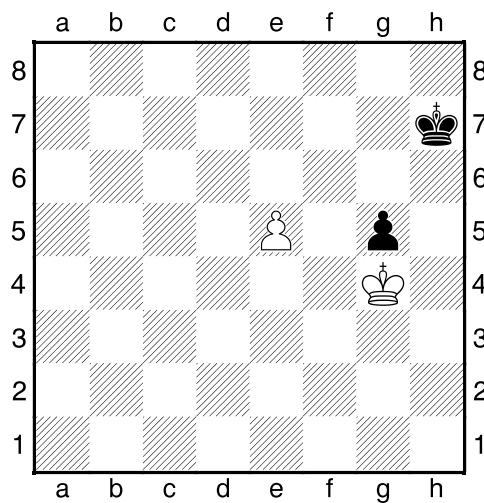
strana 3/3



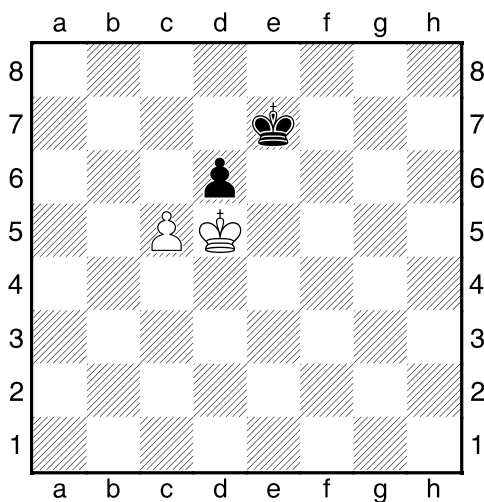
1.příklad Černý na tahu



2.příklad Bílý na tahu



3.příklad Bílý na tahu



4.příklad Černý na tahu

