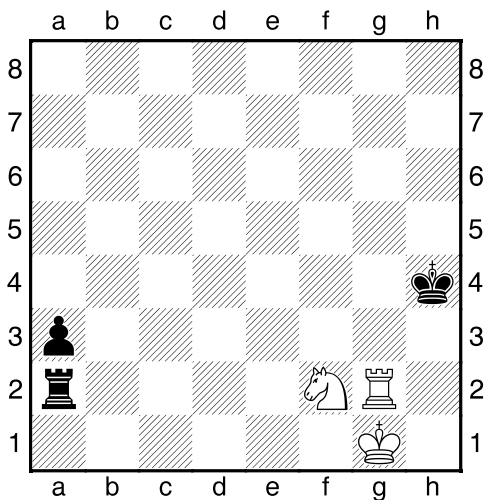
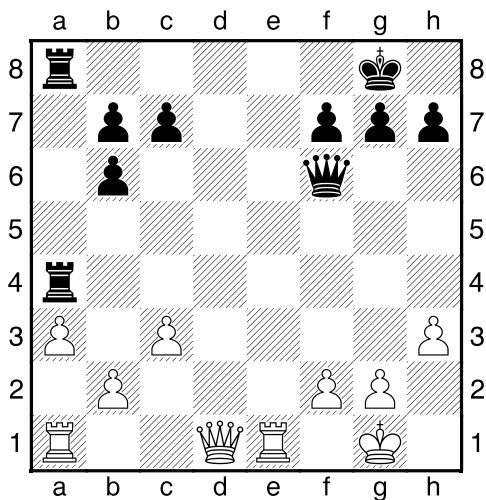


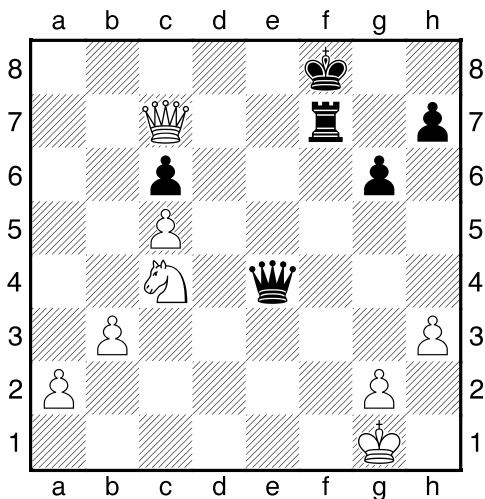
Bílý na tahu



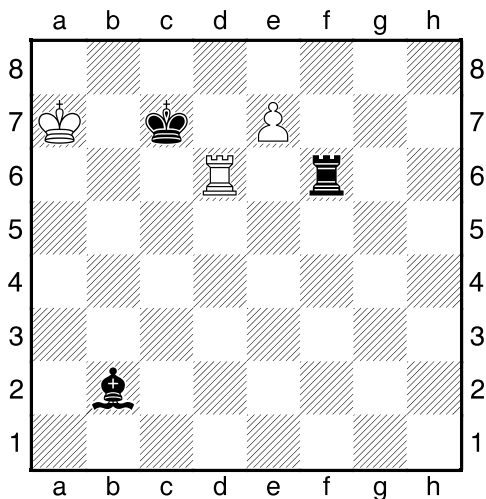
Bílý na tahu



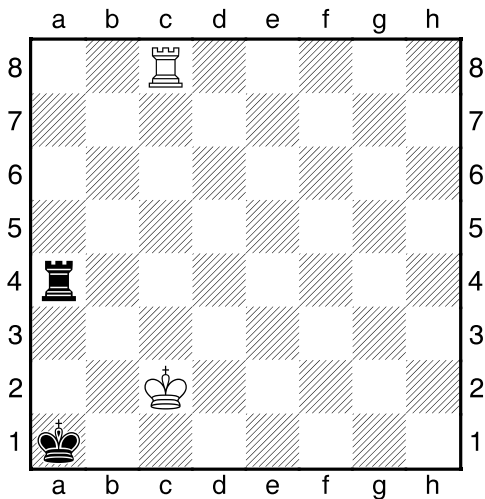
Bílý na tahu



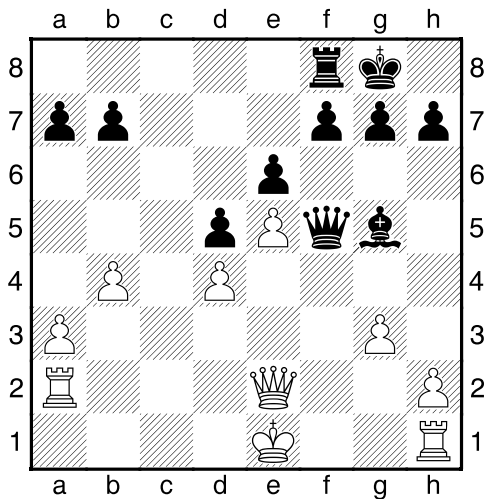
Bílý na tahu



Bílý na tahu



Černý na tahu

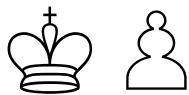


HRADIŠTĚ C DÚ35a 17.05.2021,

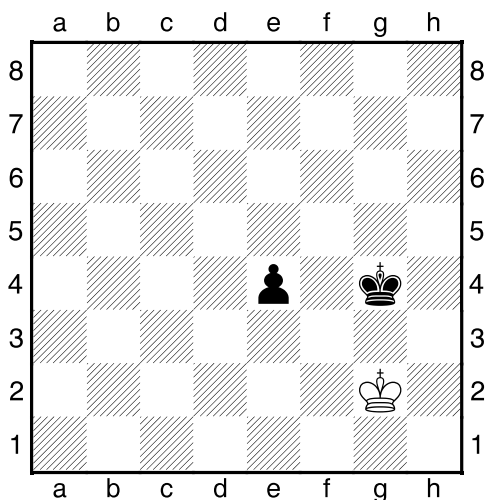
Taktika a koncovky

(ŠK Biolek 007,3)

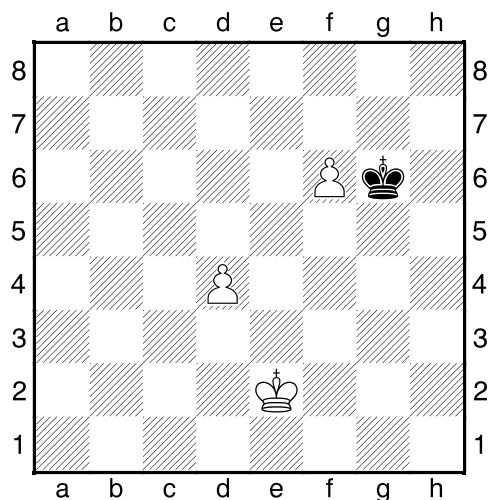
!!! Pod každý diagram napište první tah a jak partie dopadne !!!
(navíc můžete v diagramech označit KP)
druhá strana ze dvou



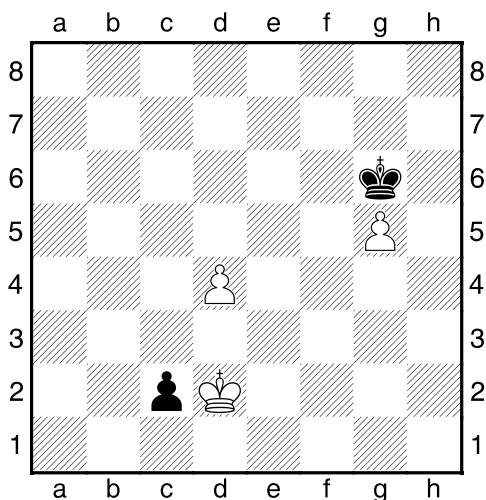
1.příklad Černý na tahu



2.příklad Bílý na tahu



3.příklad Bílý na tahu



4.příklad Černý na tahu

