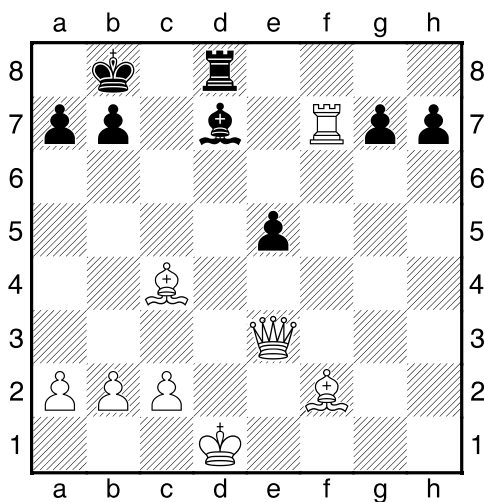
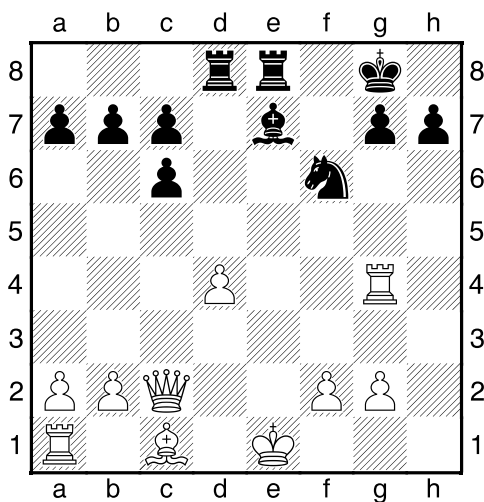


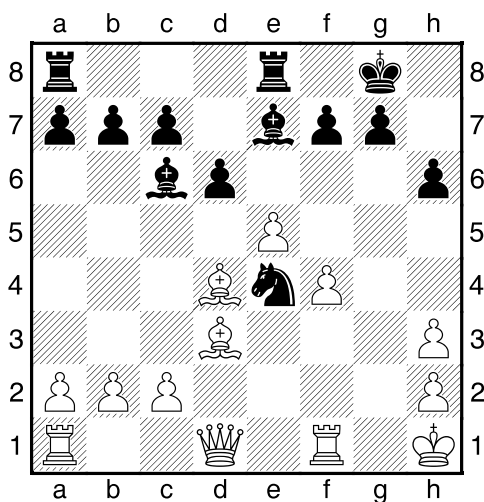
Černý na tahu



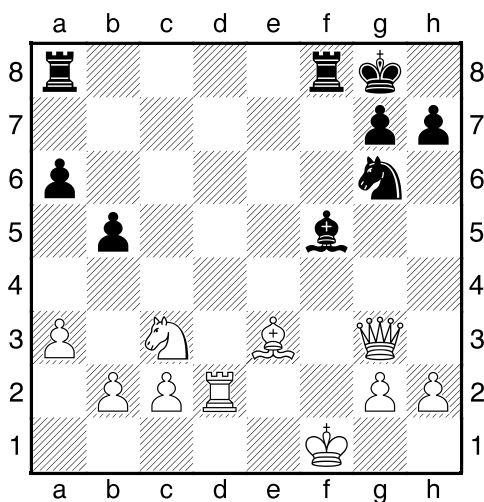
Černý na tahu



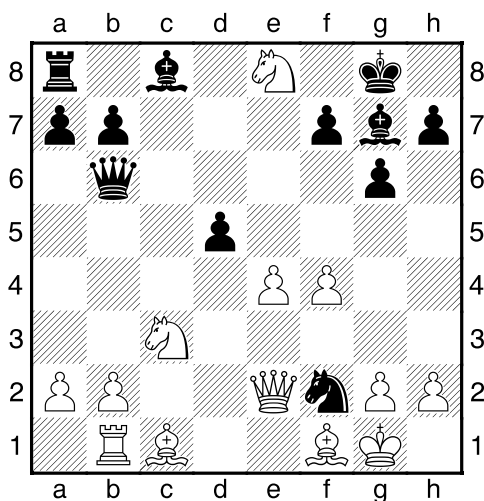
Černý na tahu



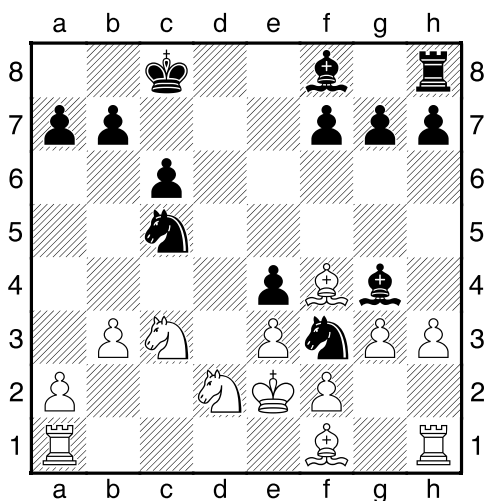
Černý na tahu



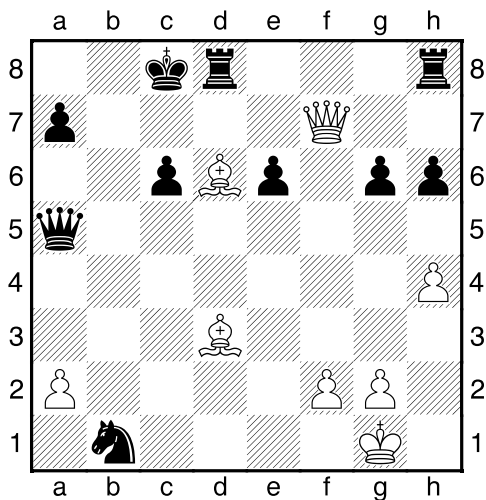
Černý na tahu



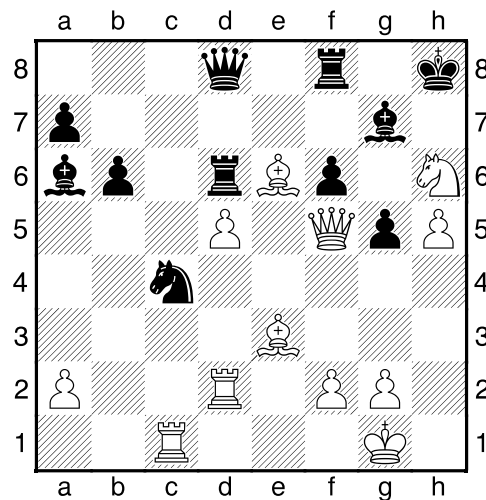
Černý na tahu



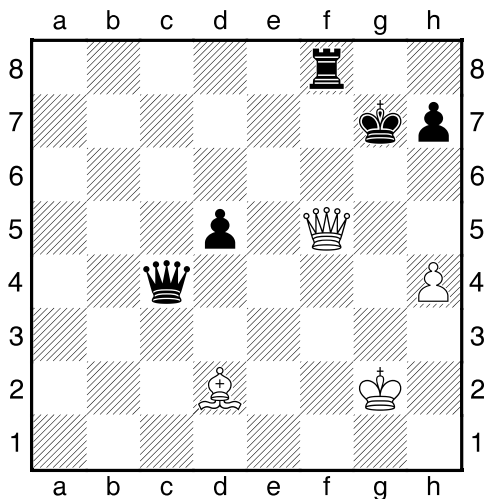
Bílý na tahu



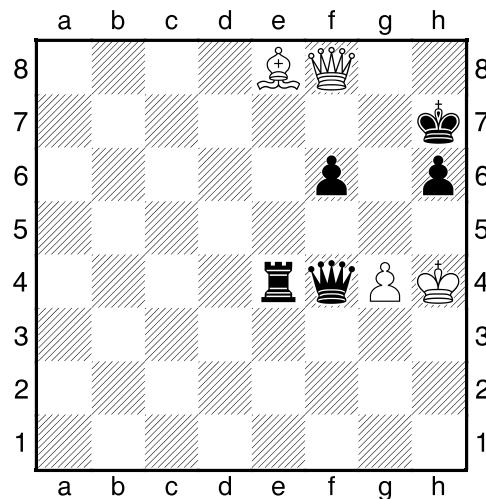
Bílý na tahu



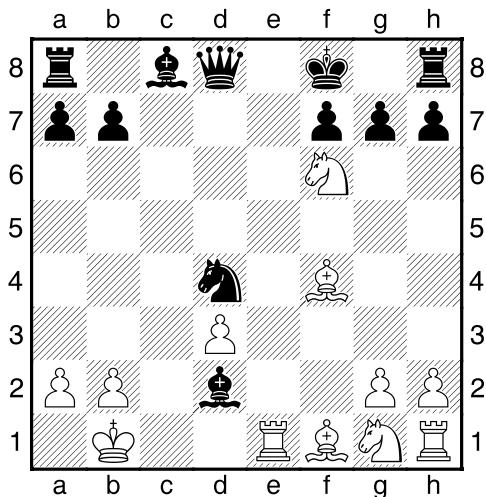
Bílý na tahu



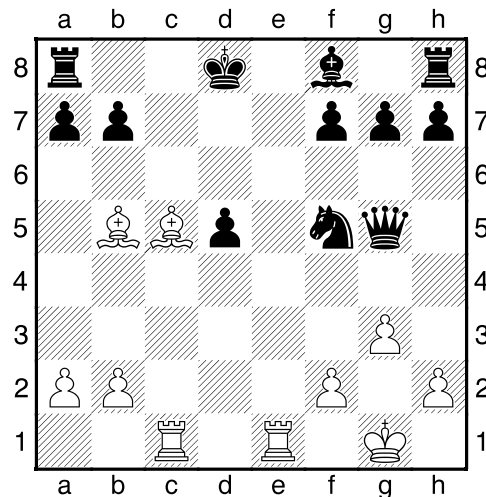
Bílý na tahu



Bílý na tahu



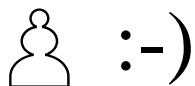
Bílý na tahu



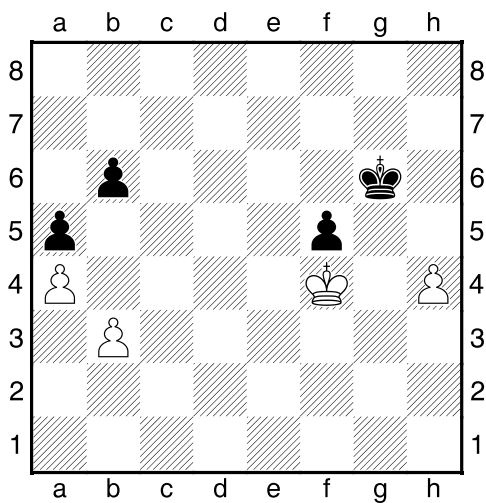
**HRADIŠTĚ C, DÚ38a, 07.06.2019,**  
**Taktika a koncovky**  
(ŠK Biolek 011,1)

**!!! Pod každý diagram napište první tah a jak partie dopadne !!!**

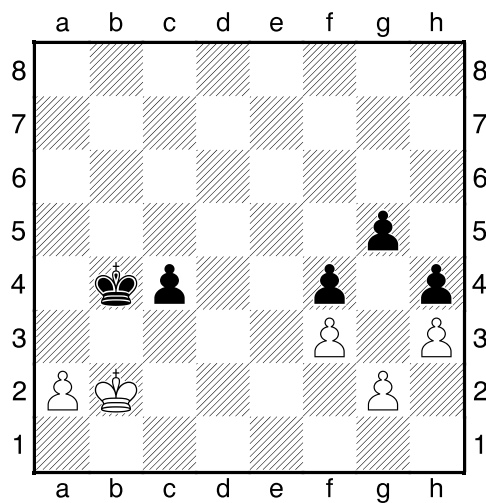
strana 3/3



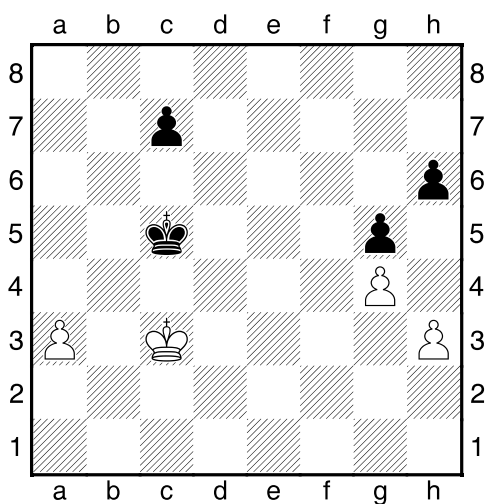
1.příklad Bílý na tahu



2.příklad Černý na tahu



3.příklad Černý na tahu



4.příklad Bílý na tahu

