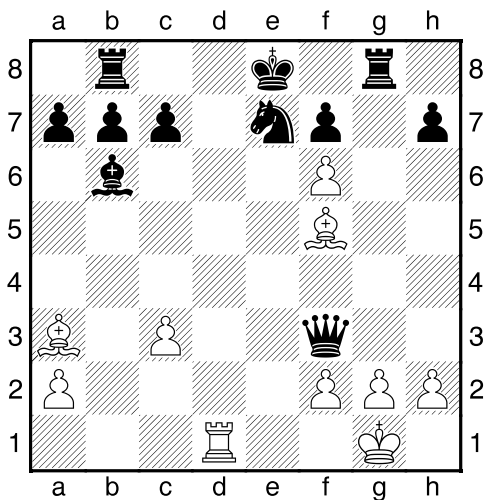
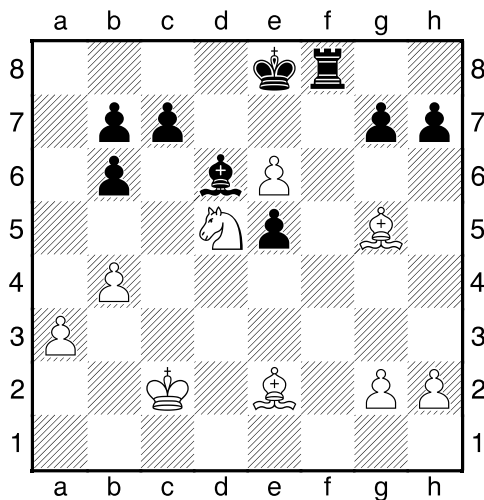


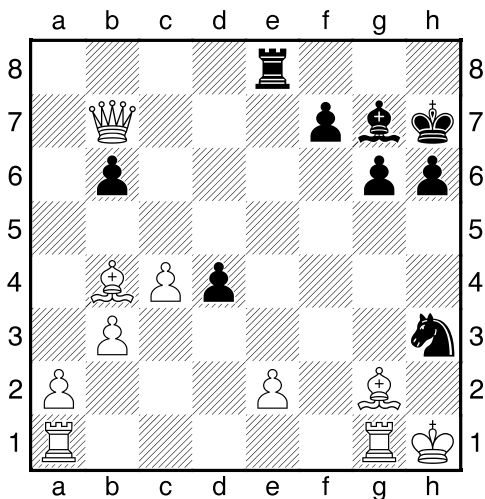
Bílý na tahu



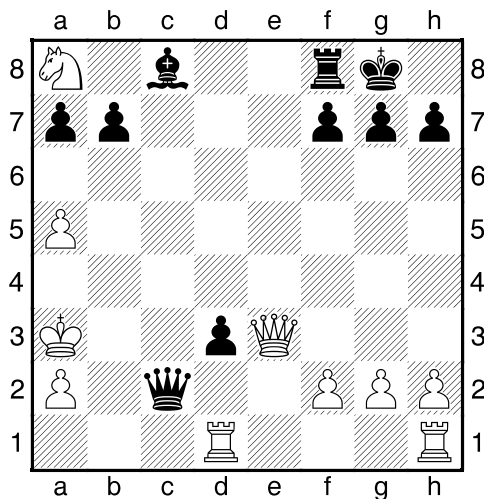
Bílý na tahu



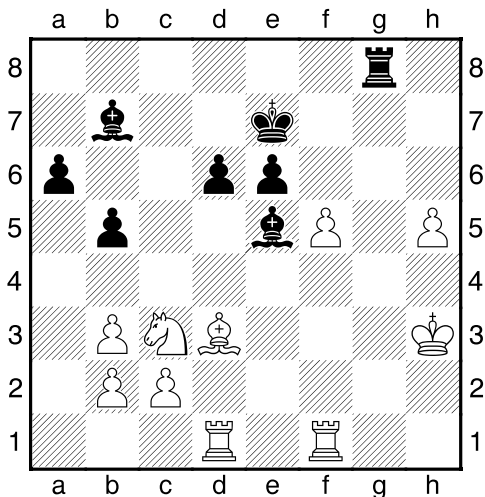
Černý na tahu



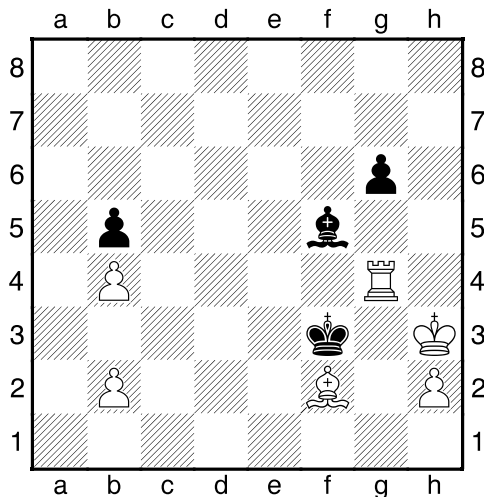
Černý na tahu



Černý na tahu



Černý na tahu



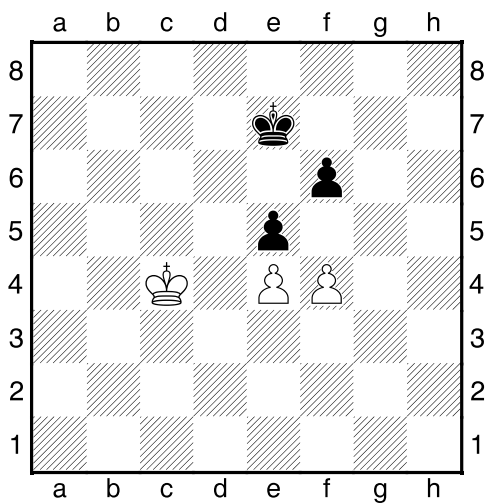
HRADIŠTĚ C DÚ39a 14.06.2021,
Taktika a koncovky
 (ŠK Biolek 007,x)

!!! Pod každý diagram napište první tah a jak partie dopadne !!!

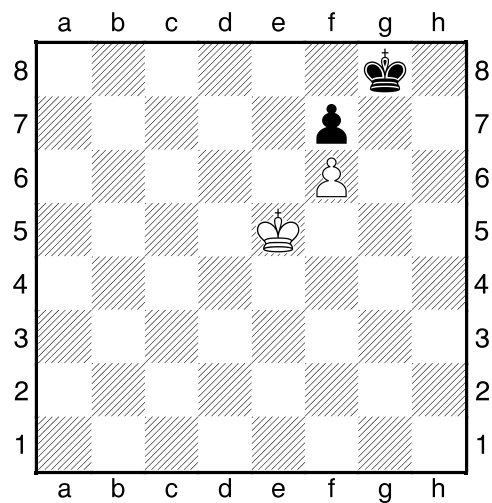
druhá strana ze dvou



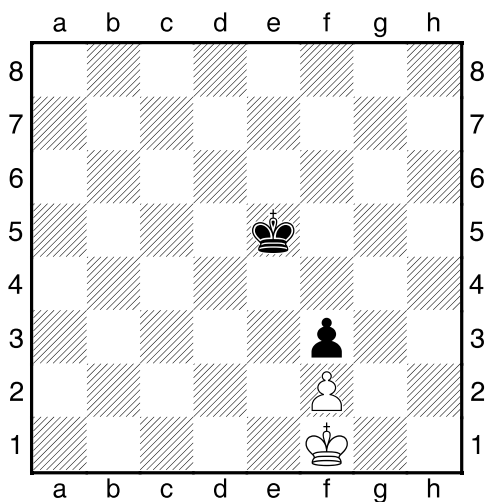
1.příklad Bílý na tahu



2.příklad Bílý na tahu



3.příklad Černý na tahu



4.příklad Bílý na tahu

