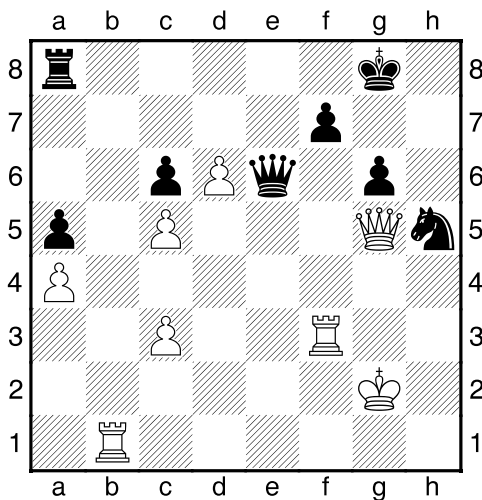
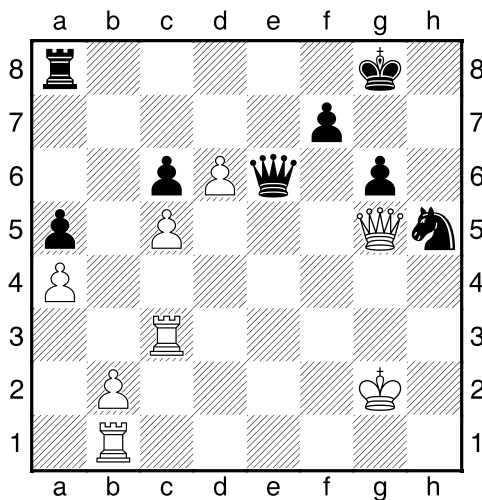


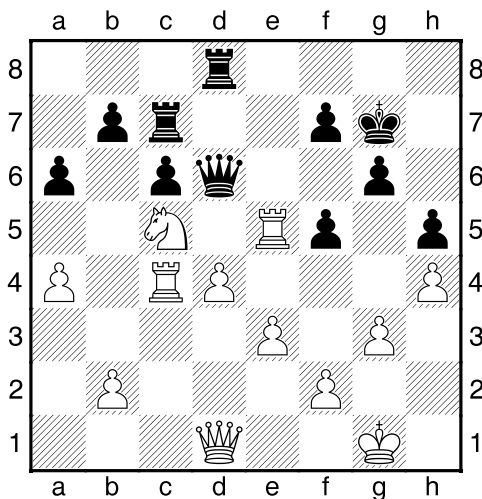
Černý na tahu



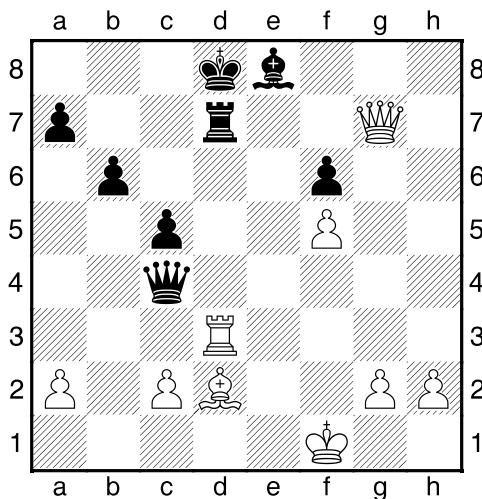
Černý na tahu



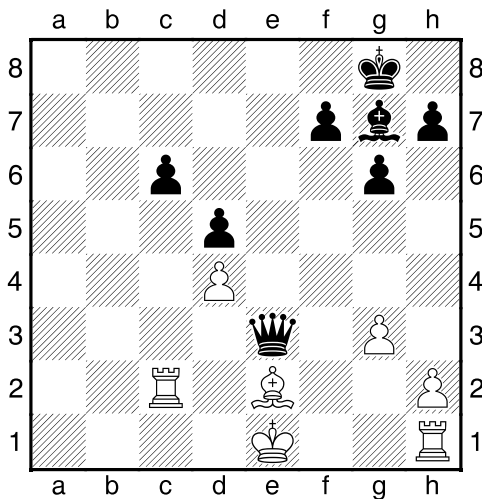
Černý na tahu



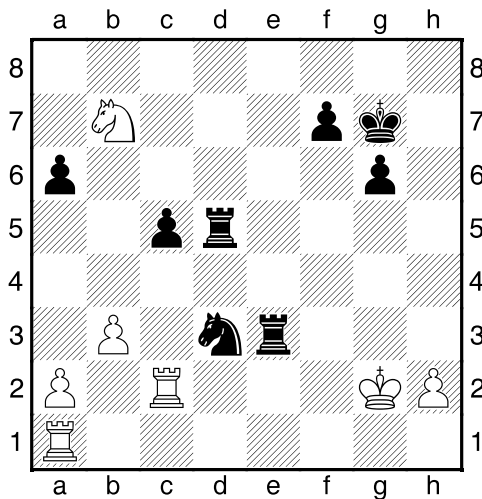
Černý na tahu



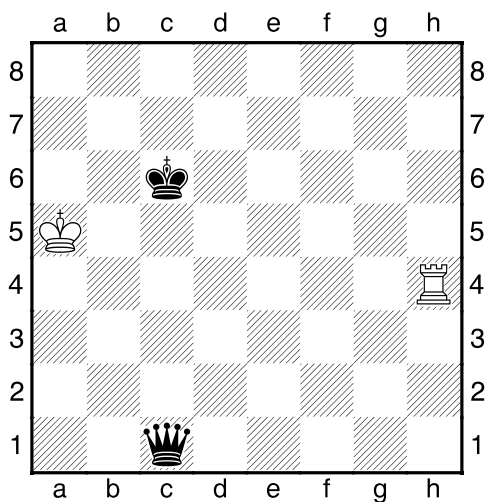
Černý na tahu



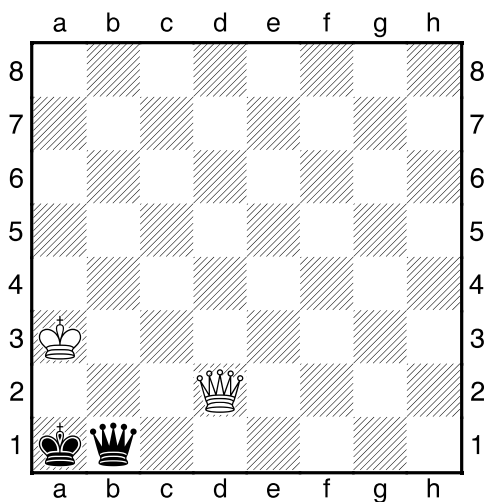
Černý na tahu



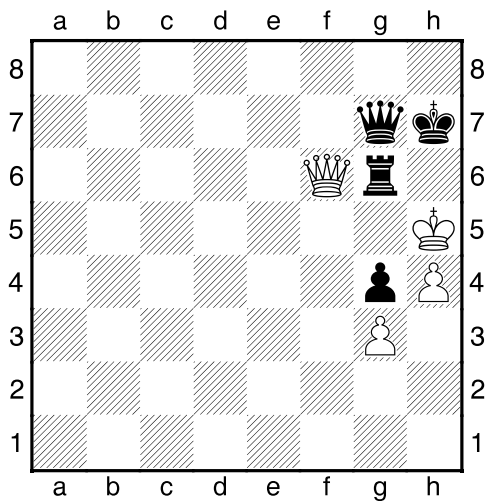
Bílý na tahu



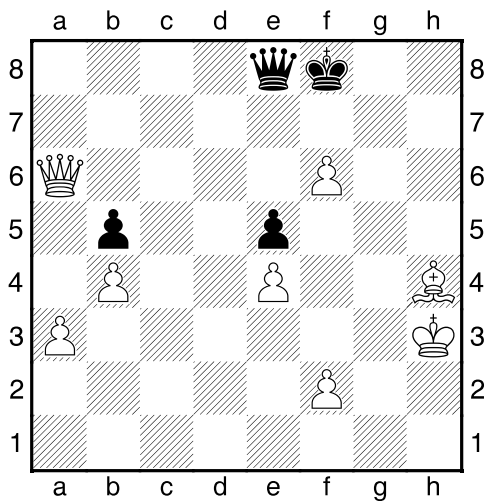
Černý na tahu



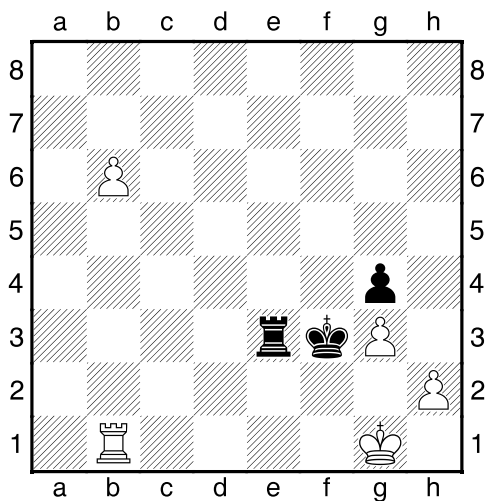
Bílý na tahu



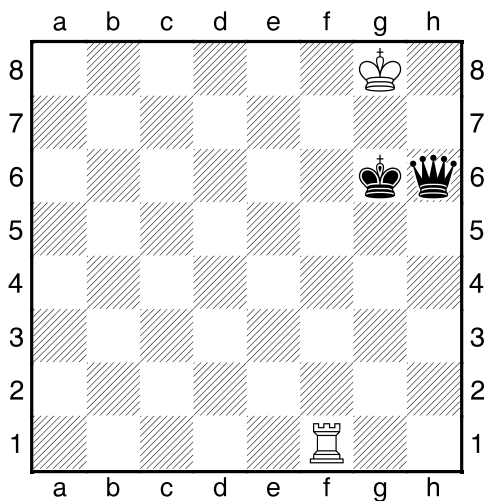
Černý na tahu



Černý na tahu



Bílý na tahu



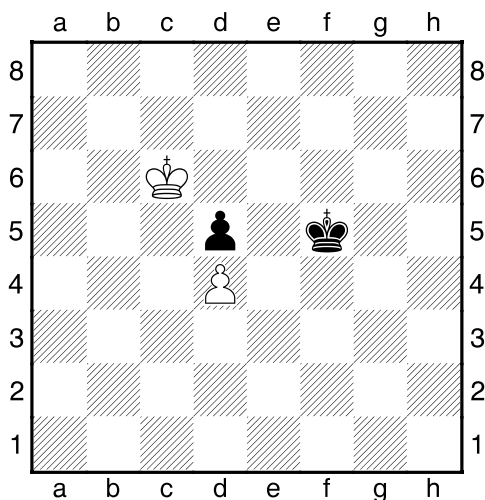
HRADIŠTĚ C, DÚ41a, 22.06.2018,
Taktika + koncovky mix
(Biolek 008,4)

!!! Pod každý diagram napište první tah a jak partie dopadne !!!

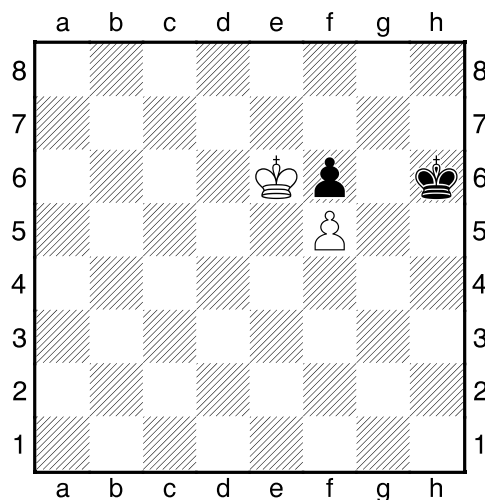
třetí strana ze tří



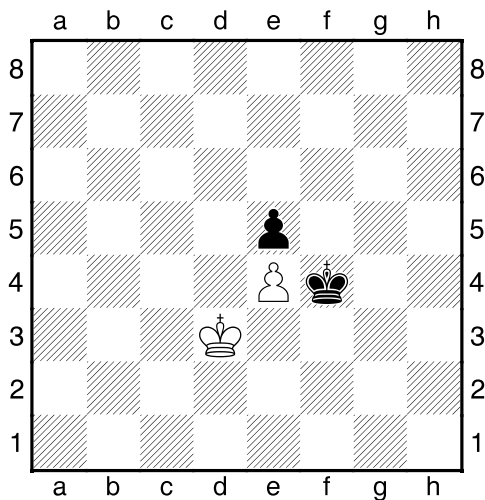
1.příklad Černý na tahu



2.příklad Černý na tahu



3.příklad Bílý na tahu



4.příklad Černý na tahu

