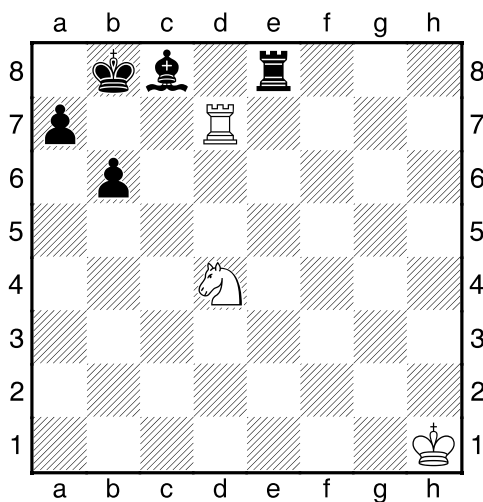
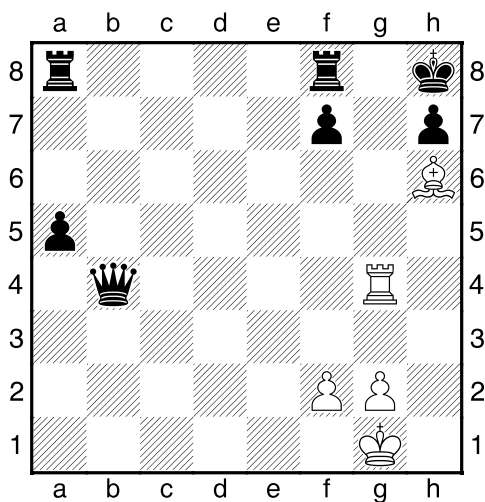


Bílý na tahu



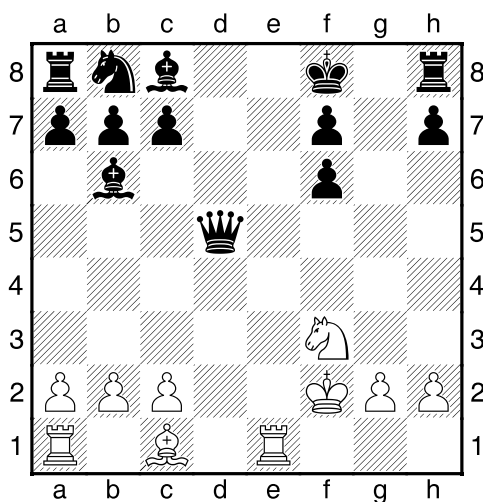
NÁPOVĚDA: 1. Jc6+ 2.

Bílý na tahu



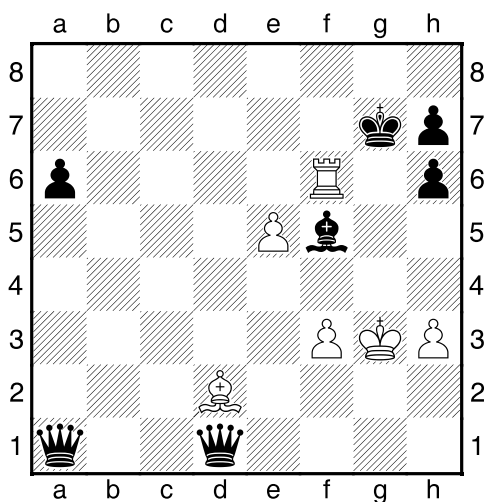
NÁPOVĚDA: 1. Sg7+ 2.

Bílý na tahu



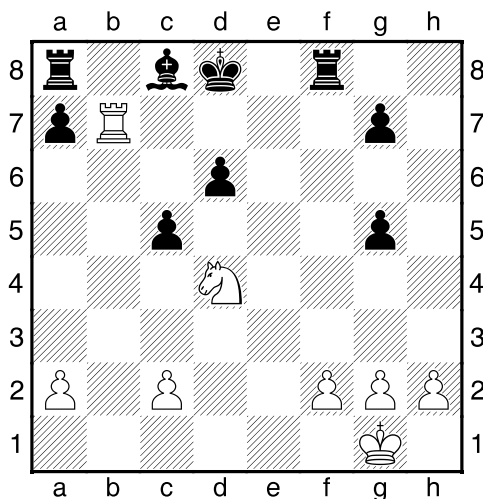
NÁPOVĚDA: 1. Sh6+ 2.

Bílý na tahu



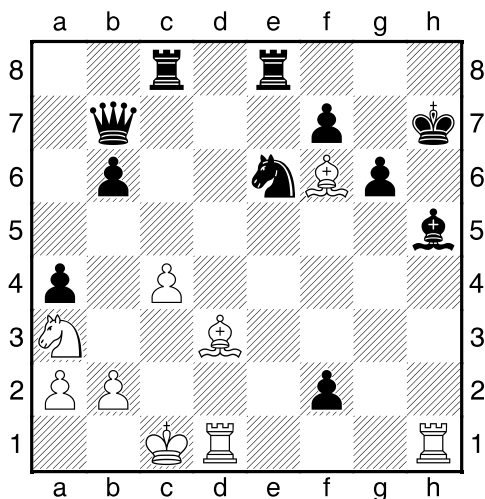
NÁPOVĚDA: 1. Sxh6+ 2.

Bílý na tahu



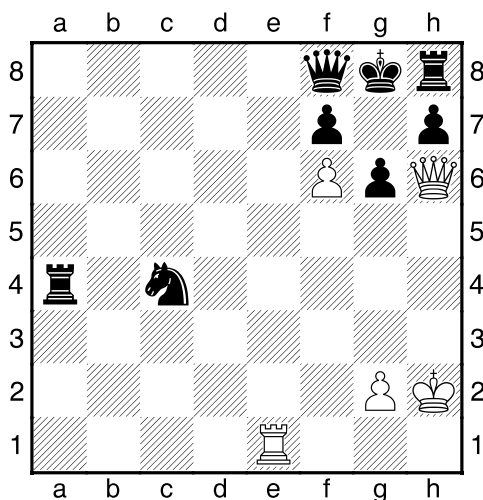
NÁPOVĚDA: 1. Jc6+ 2.

Bílý na tahu



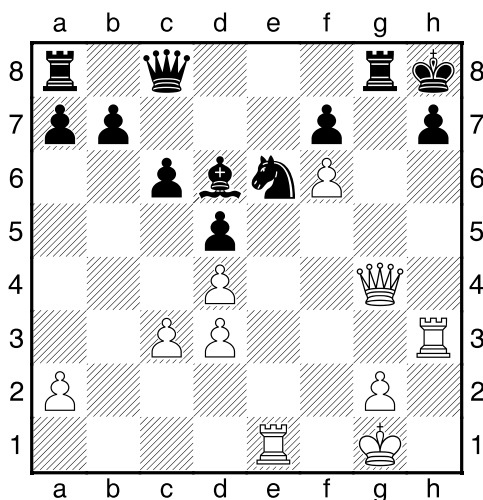
NÁPOVĚDA: 1. Vxh5+ 2.

Bílý na tahu



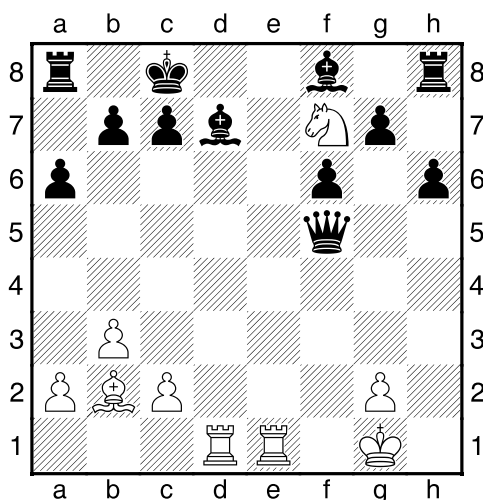
NÁPOVĚDA: 1. Ve8 2.

Bílý na tahu



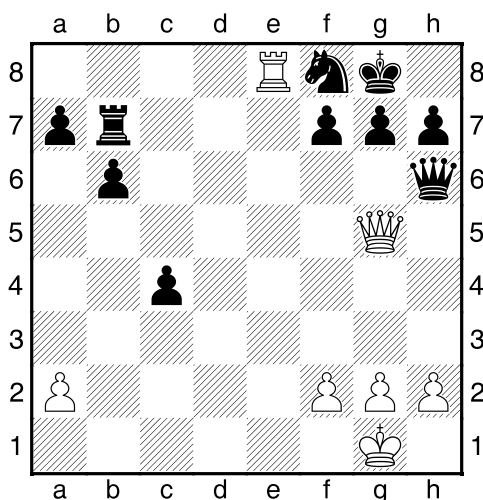
NÁPOVĚDA: 1. Vxh7+ 2.

Bílý na tahu



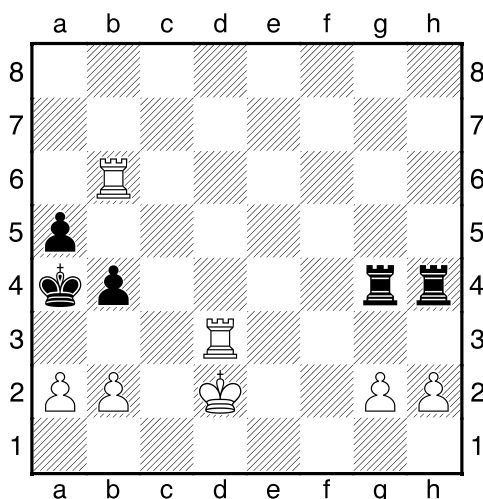
NÁPOVĚDA: 1. Ve8+ 2.

Bílý na tahu



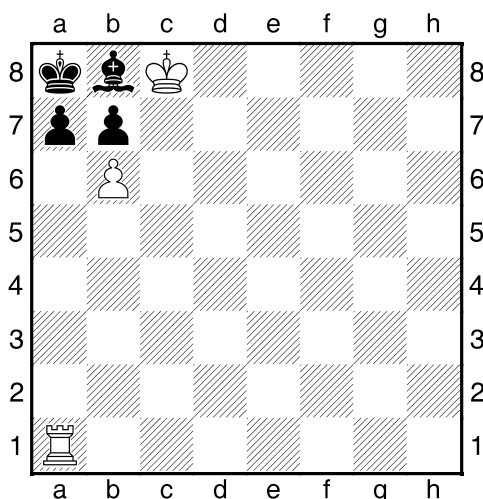
NÁPOVĚDA: 1. Vxf8+ 2.

Bílý na tahu



NÁPOVĚDA: 1. Va3+ 2.

Bílý na tahu



NÁPOVĚDA: 1. Va6 2.