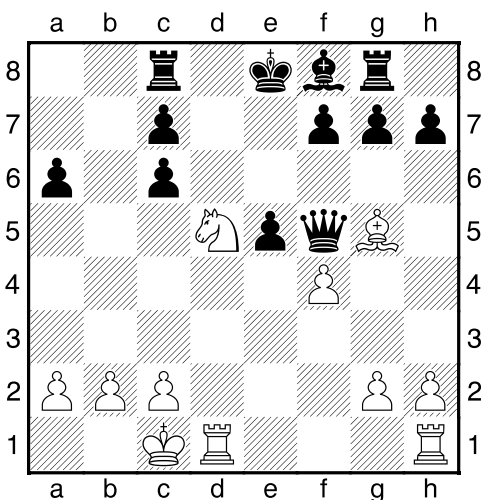
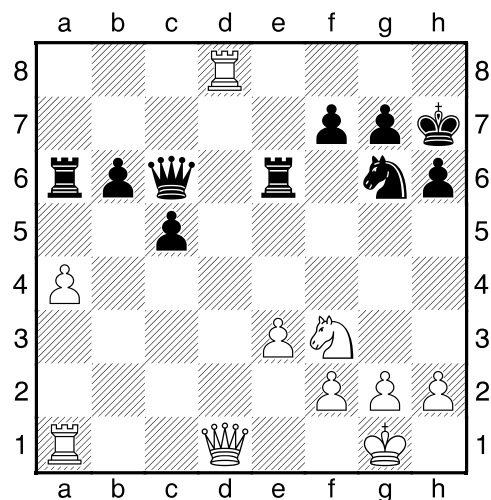


Bílý na tahu



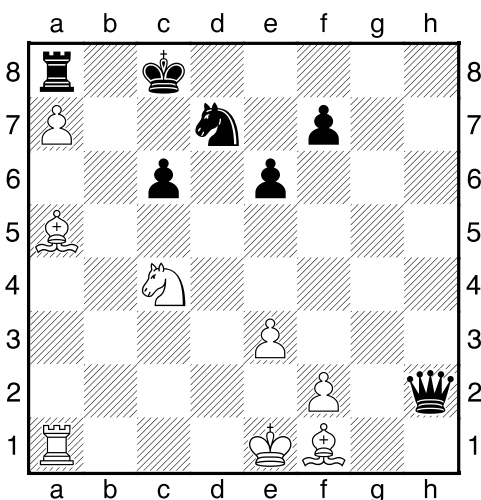
NÁPOVĚDA: 1. Jxc7+ 2.

Bílý na tahu



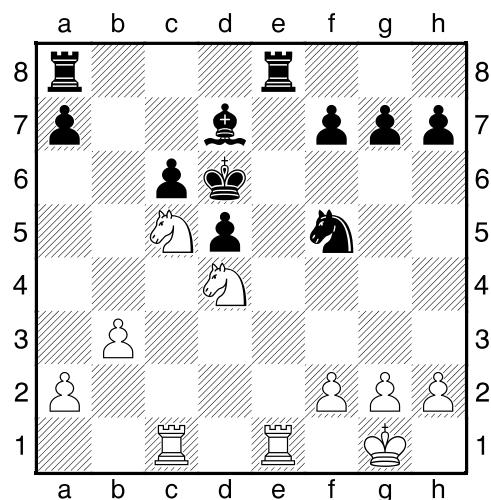
NÁPOVĚDA: 1. Jg5+ 2.

Bílý na tahu



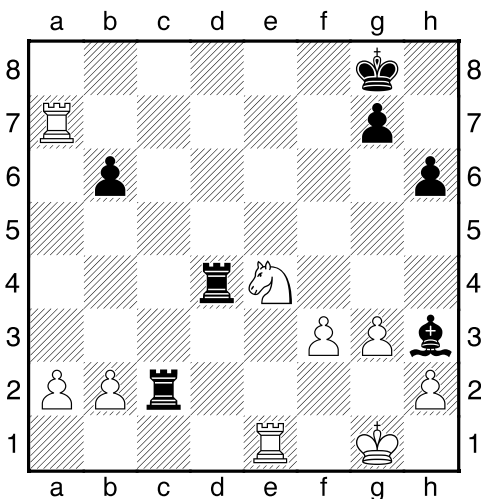
NÁPOVĚDA: 1. Jd6+ 2.

Bílý na tahu



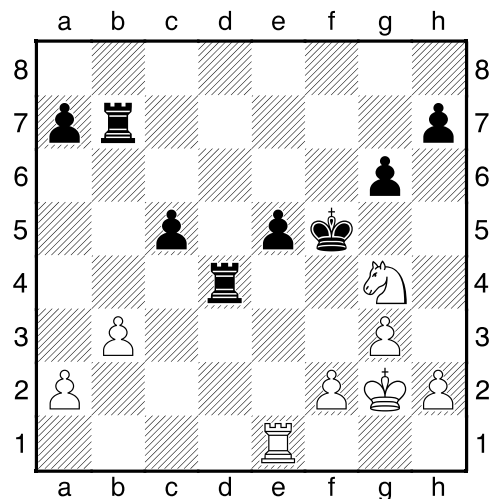
NÁPOVĚDA: 1. Jb5+ 2.

Bílý na tahu



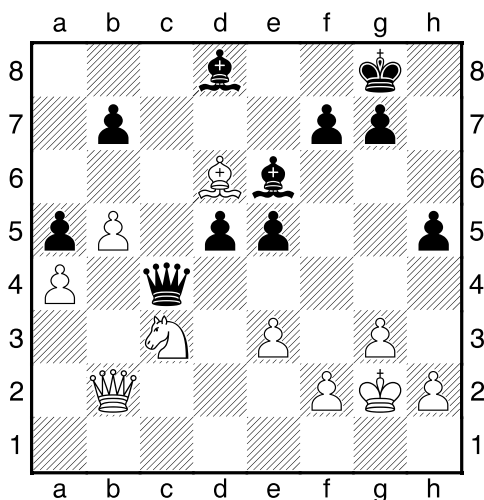
NÁPOVĚDA: 1. Jf6+ 2.

Bílý na tahu



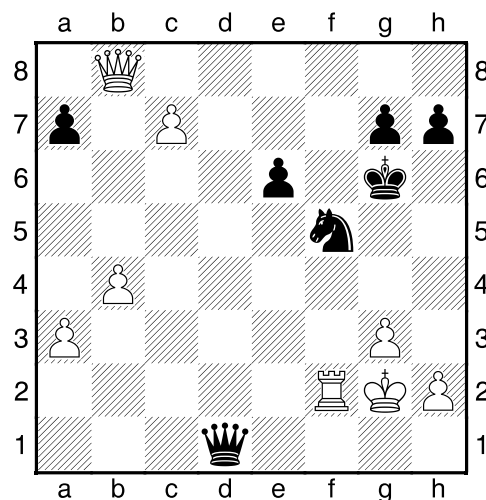
NÁPOVĚDA: 1. Vxe5+ 2.

Černý na tahu



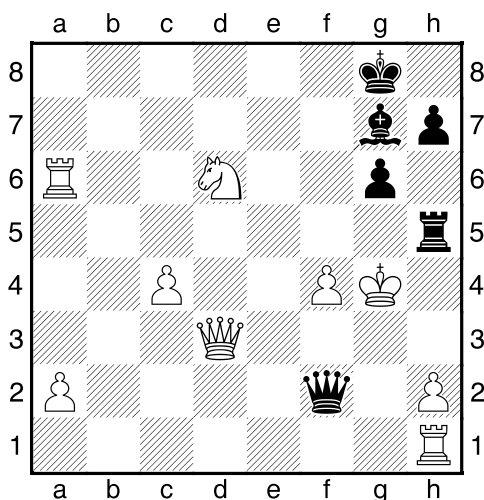
NÁPOVĚDA: 1. Sh3+ 2.

Černý na tahu



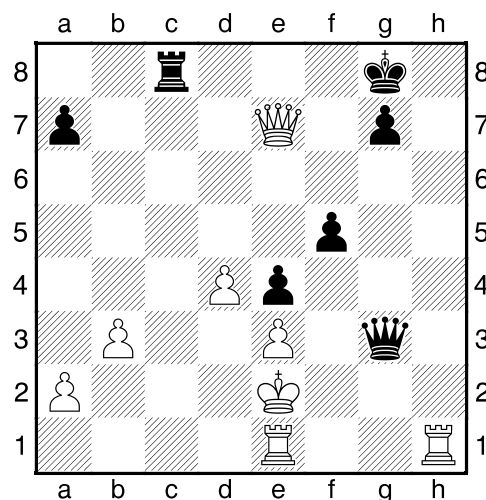
NÁPOVĚDA: 1. Je3+ 2.

Černý na tahu



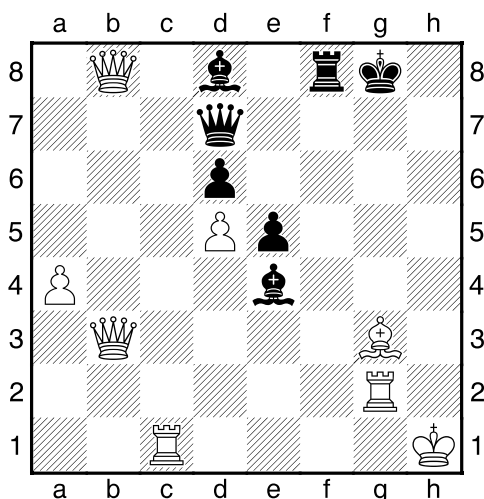
NÁPOVĚDA: 1. Vh4+ 2.

Černý na tahu



NÁPOVĚDA: 1. Dg2+ 2.

Černý na tahu



NÁPOVĚDA: 1. Dh3+ 2.

Černý na tahu

