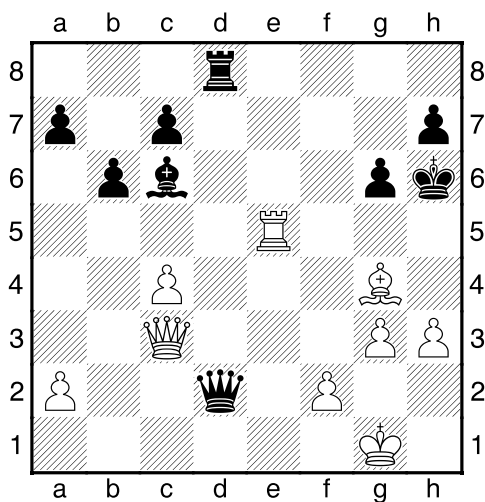
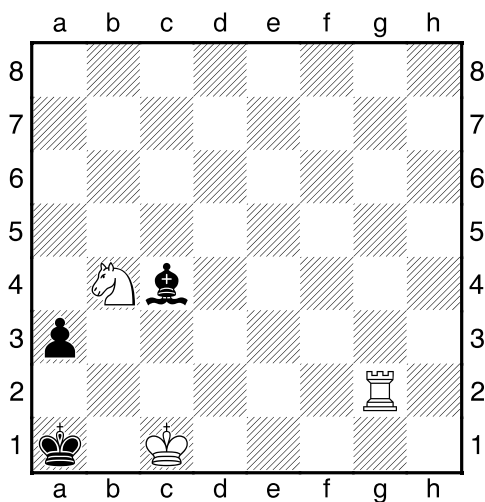


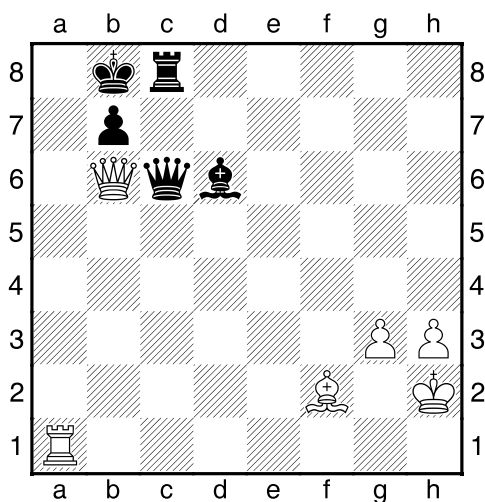
Bílý na tahu



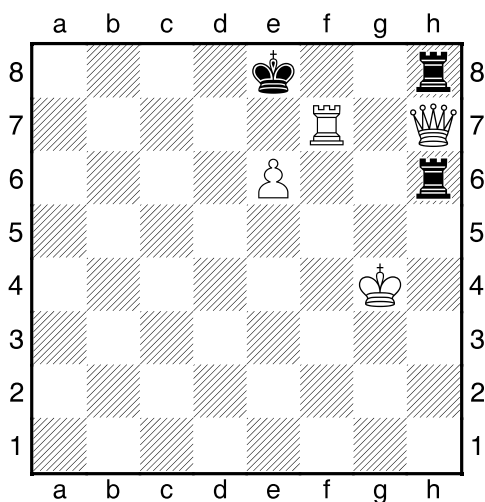
Bílý na tahu



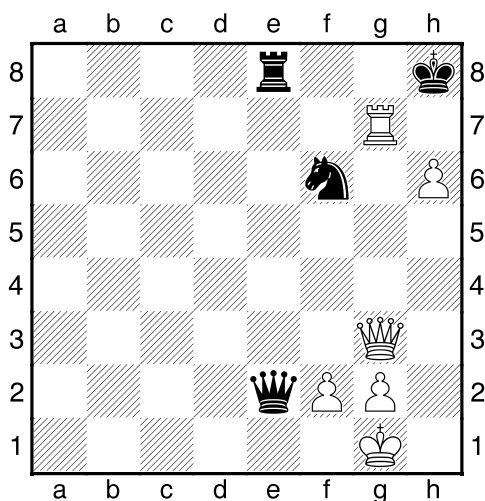
Bílý na tahu



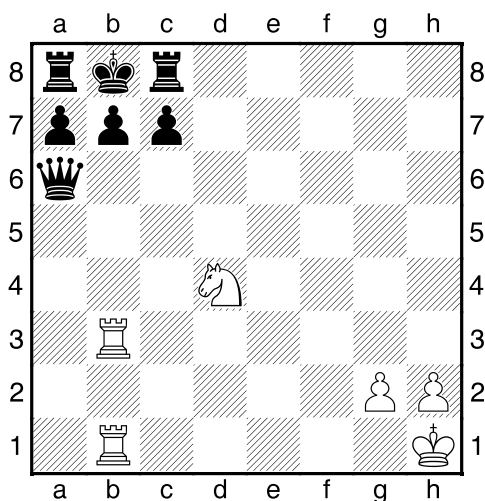
Bílý na tahu



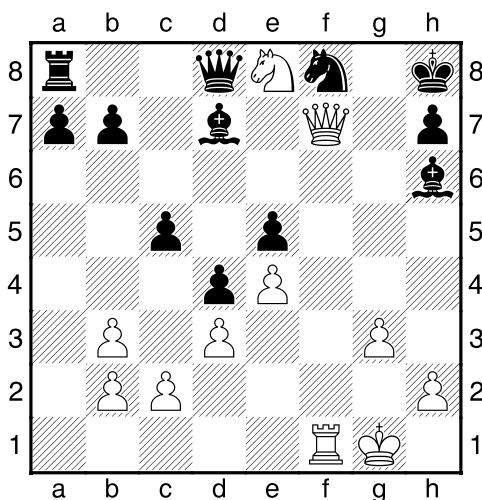
Bílý na tahu



Bílý na tahu

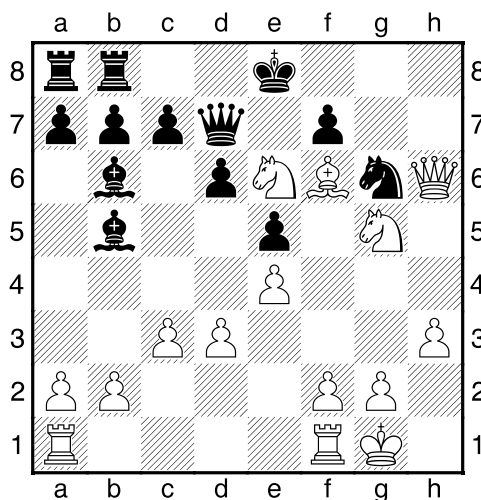


Bílý na tahu



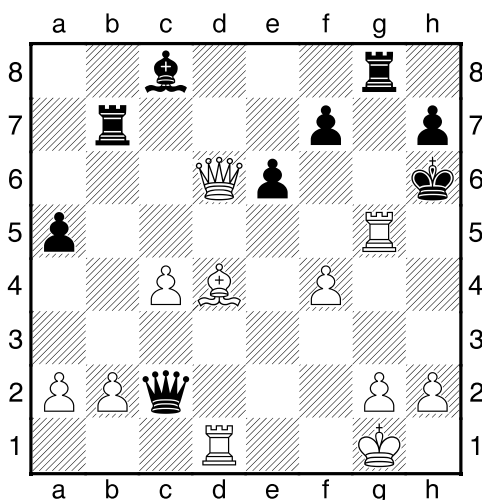
NÁPOVĚDA: 1. Dxf8+ 2.

Bílý na tahu



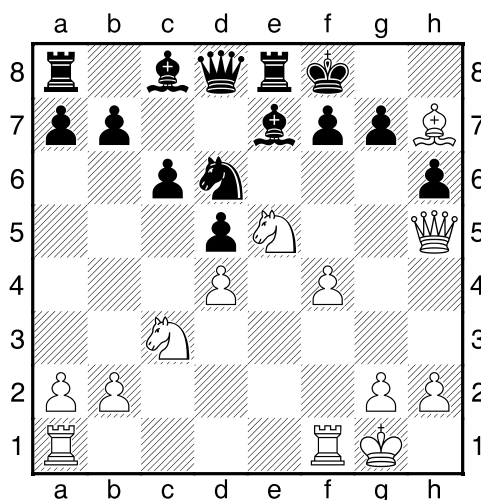
NÁPOVĚDA: 1. Df8+ 2.

Bílý na tahu



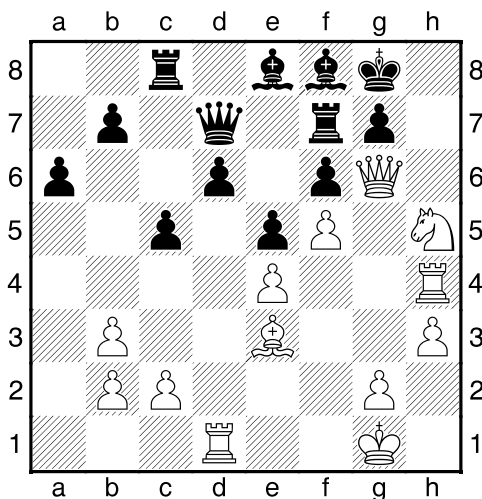
NÁPOVĚDA: 1. Df8+ 2.

Bílý na tahu



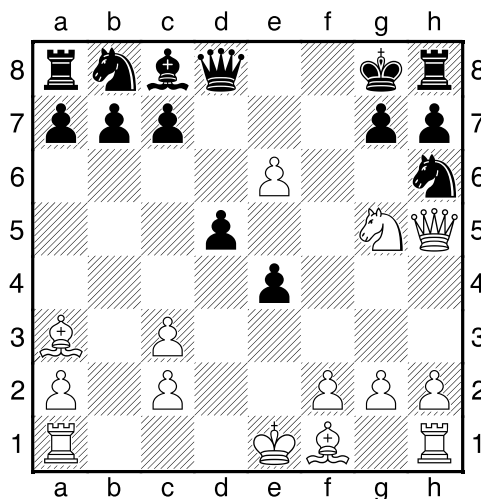
NÁPOVĚDA: 1. Dxf7+ 2.

Bílý na tahu



NÁPOVĚDA: 1. Dh7+ 2.

Bílý na tahu



NÁPOVĚDA: 1. Df7+ 2.