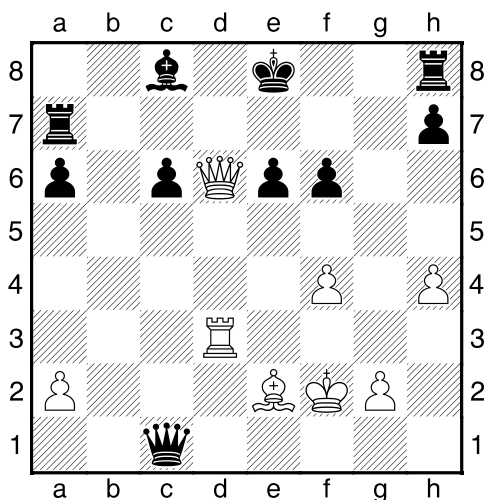
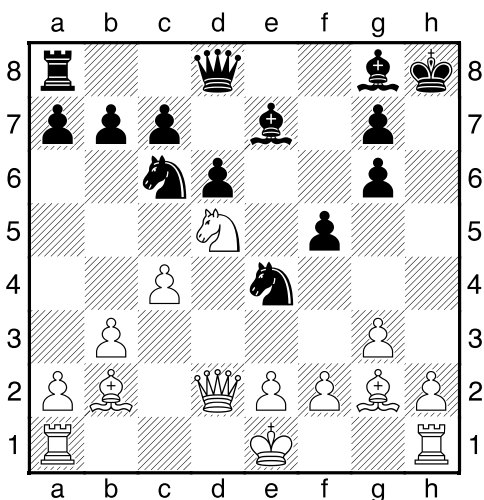


Bílý na tahu



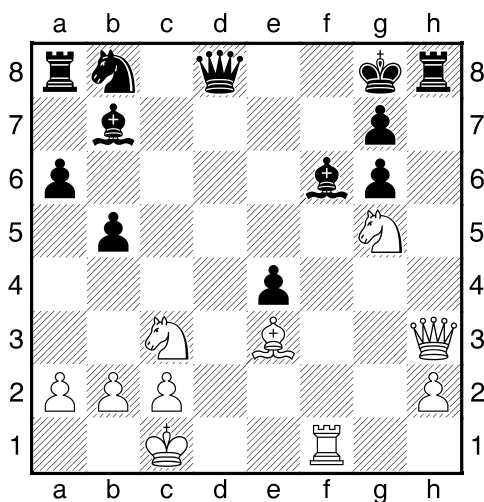
NÁPOVĚDA: 1. Sh5+ 2.

Bílý na tahu



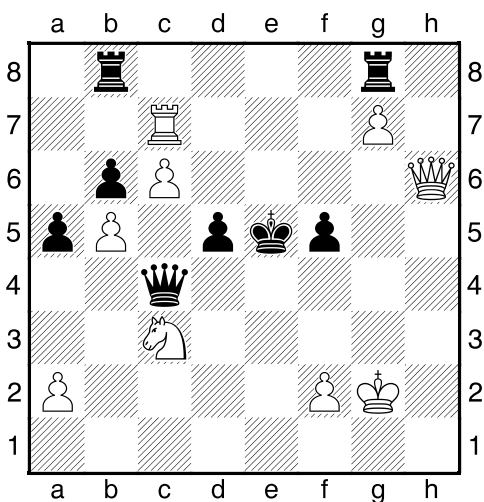
NÁPOVĚDA: 1. Dh6+ 2.

Bílý na tahu



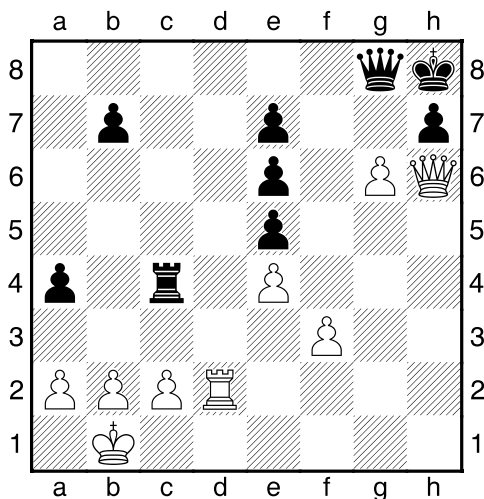
NÁPOVĚDA: 1. De6+ 2.

Bílý na tahu



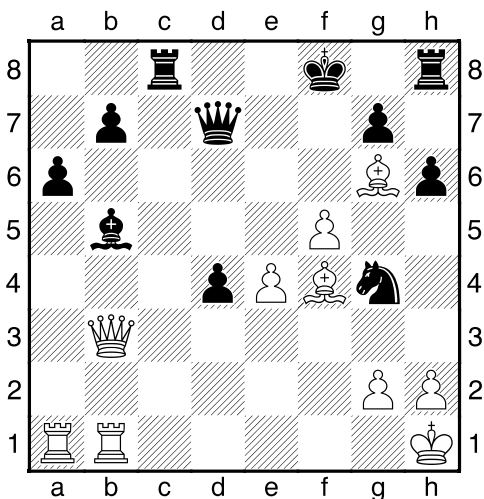
NÁPOVĚDA: 1. Ve7+ 2.

Bílý na tahu



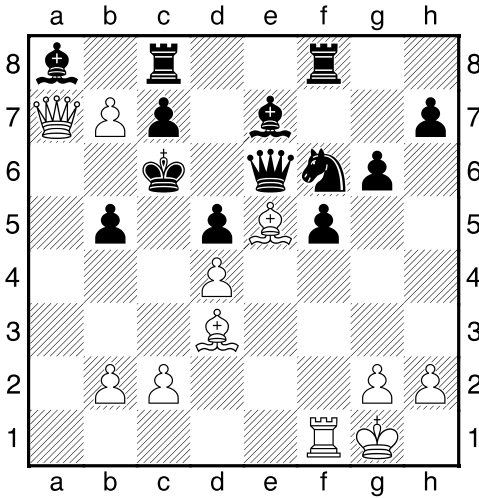
NÁPOVĚDA: 1. Vd8 2.

Bílý na tahu



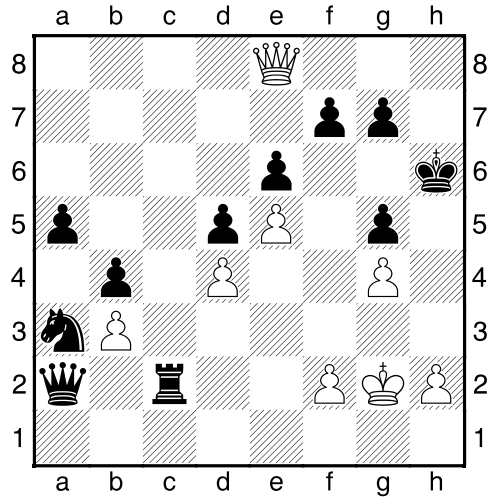
NÁPOVĚDA: 1. Sd6+ 2.

Bílý na tahu



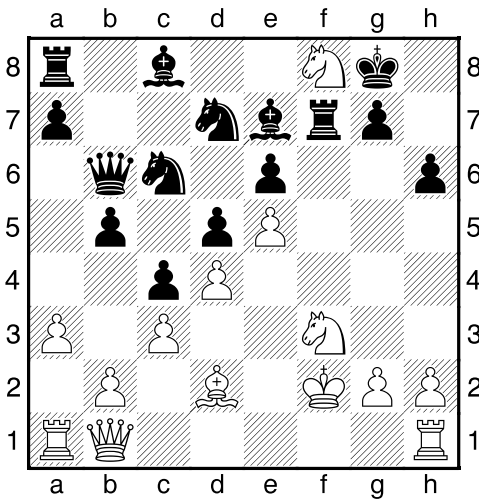
NÁPOVĚDA: 1. b8-J+ 2.

Bílý na tahu



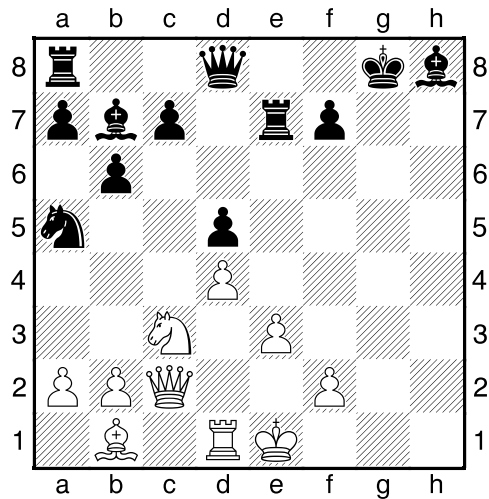
NÁPOVĚDA: 1. Dh8+ 2.

Bílý na tahu



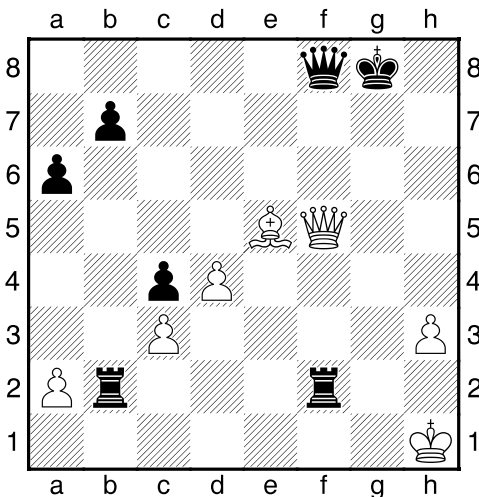
NÁPOVĚDA: 1. Dh7+ 2.

Bílý na tahu



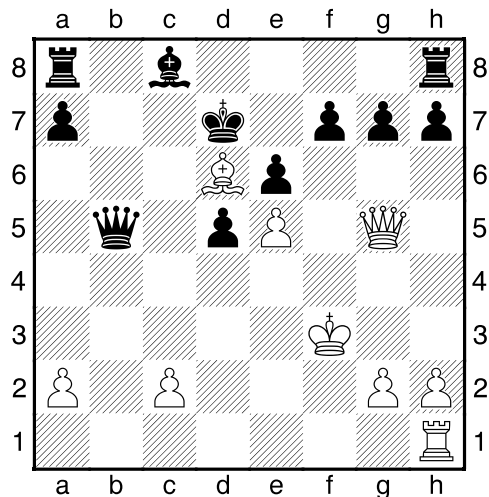
NÁPOVĚDA: 1. Dh7+ 2.

Bílý na tahu



NÁPOVĚDA: 1. Dg6+ 2.

Bílý na tahu



NÁPOVĚDA: 1. De7+ 2.