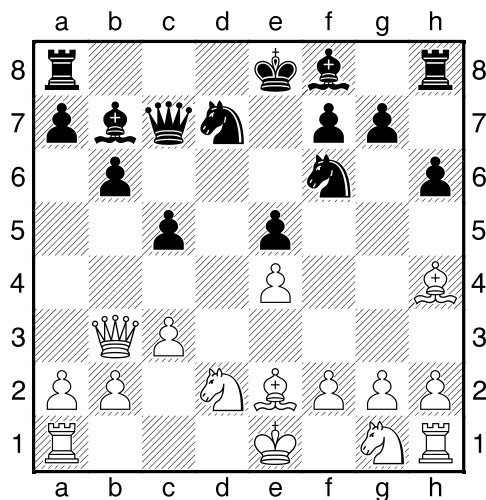
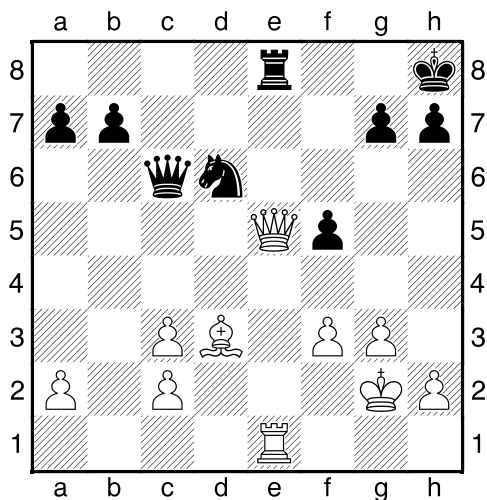


1. příklad Černý na tahu (pš 1/191)



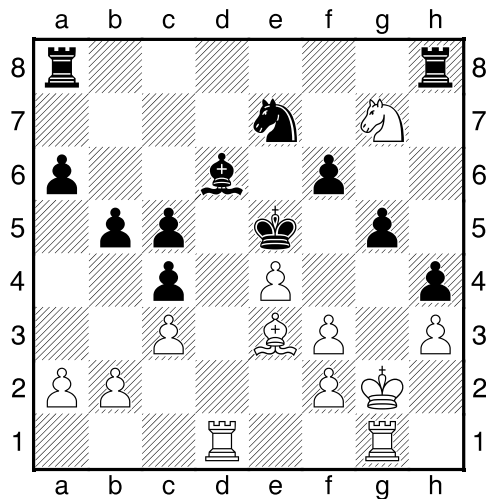
Může černý sebrat na e4?

2. příklad Bílý na tahu (pš 4/9)



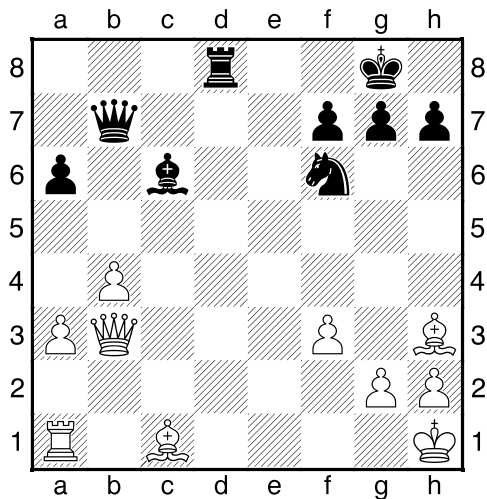
?

3. příklad Bílý na tahu (pš x092)



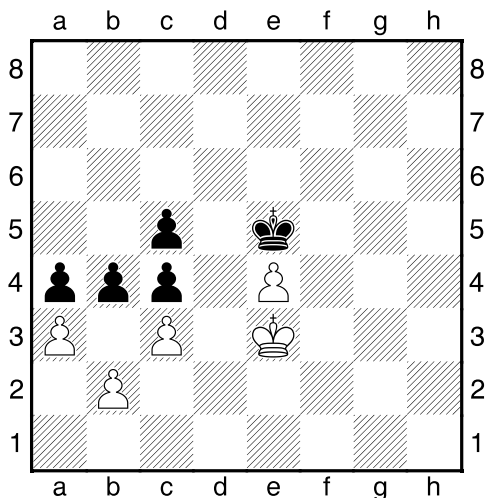
?

4. příklad Černý na tahu (pš 2/9)



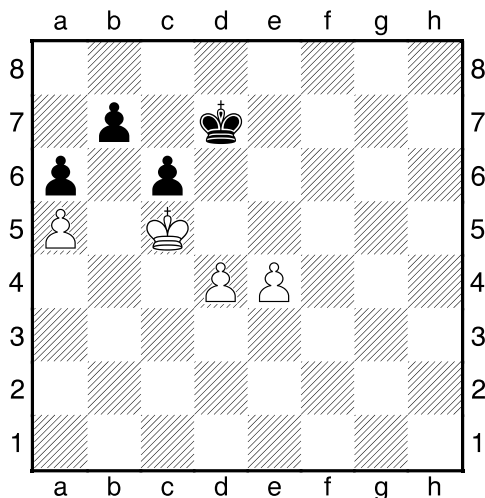
?

Bílý na tahu



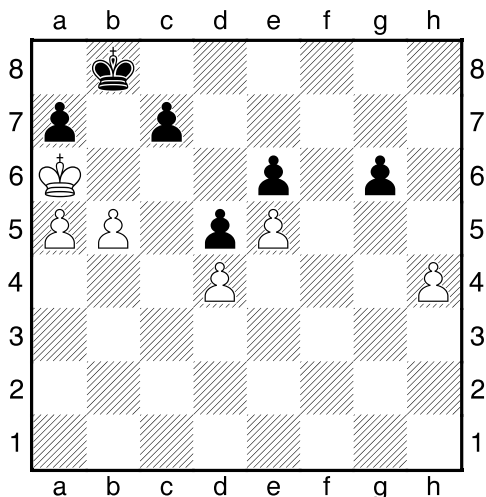
Co byste zahráli a jak partie dopadne?

Bílý na tahu



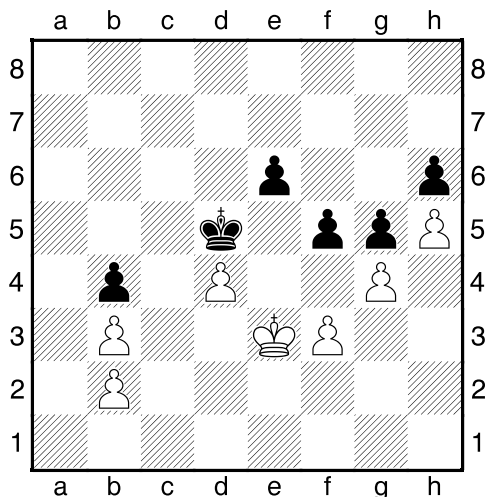
Co byste zahráli a jak partie dopadne?

Bílý na tahu



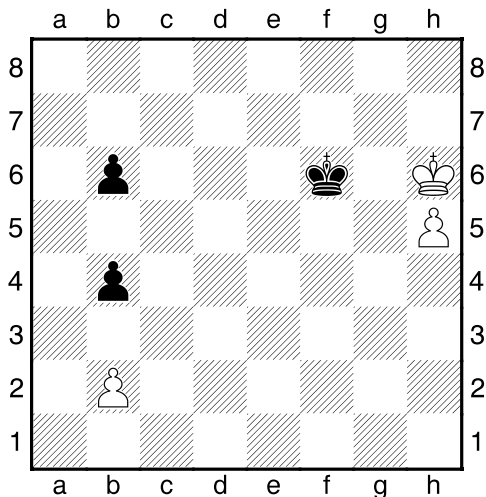
Co byste zahráli a jak partie dopadne?

Bílý na tahu



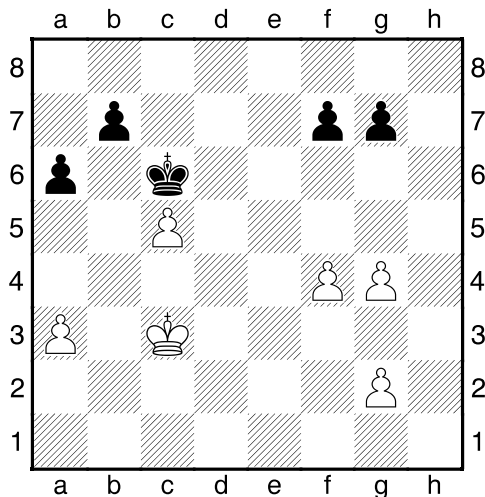
Co byste zahráli a jak partie dopadne?

Bílý na tahu



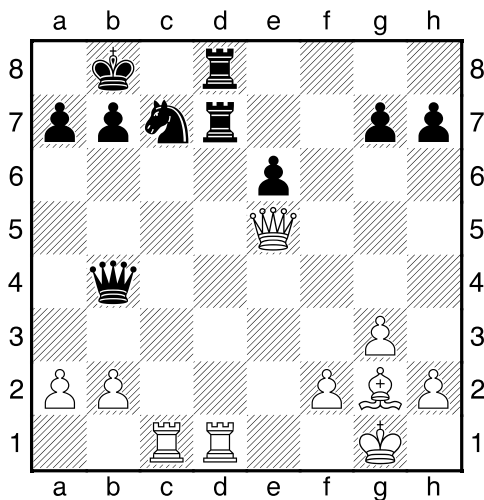
Co byste zahráli a jak partie dopadne?

Černý na tahu

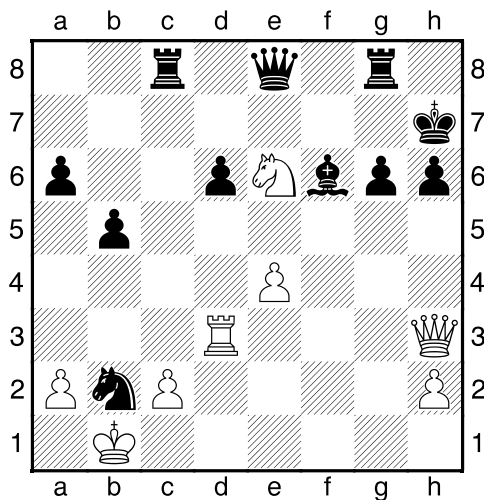


Co byste zahráli a jak partie dopadne?

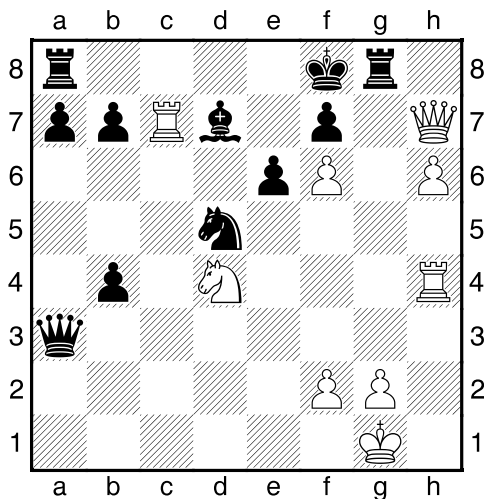
Bílý na tahu



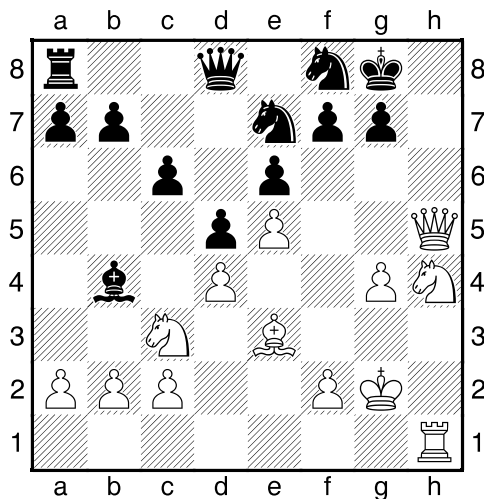
Bílý na tahu



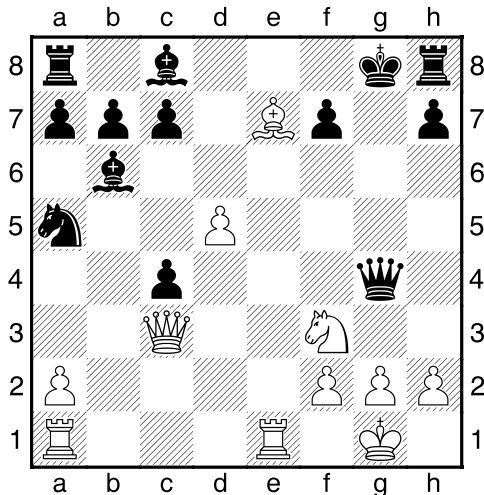
Bílý na tahu



Bílý na tahu



Bílý na tahu



Bílý na tahu

