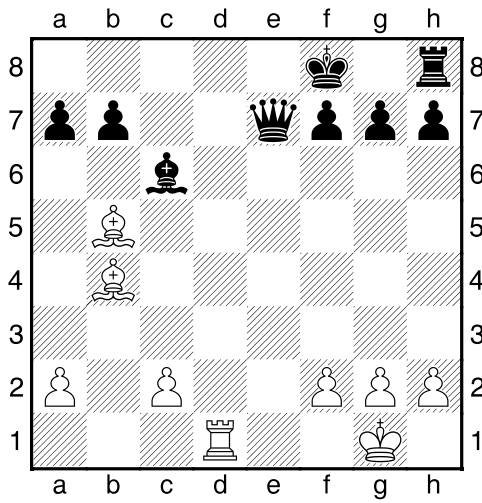
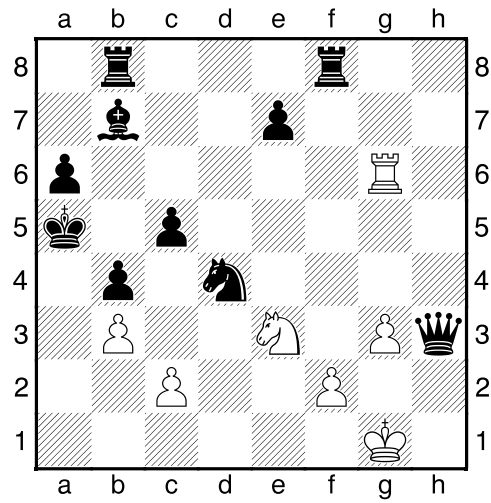


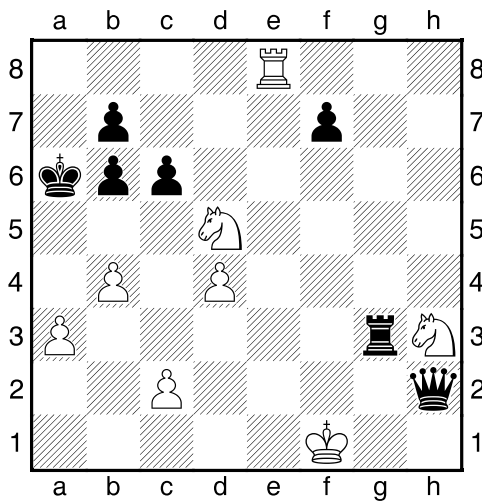
Bílý na tahu



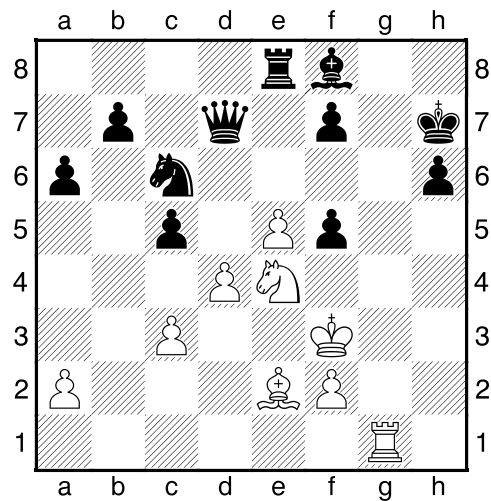
Bílý na tahu



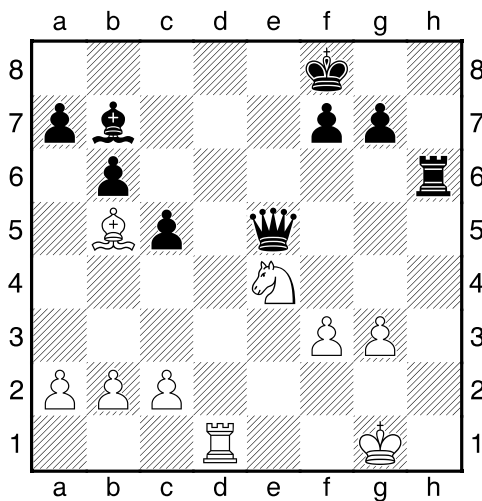
Bílý na tahu



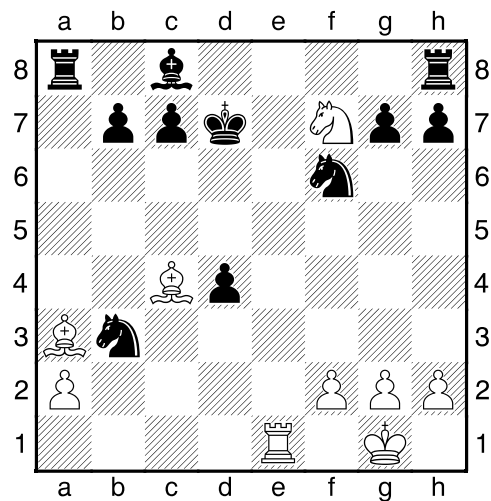
Bílý na tahu



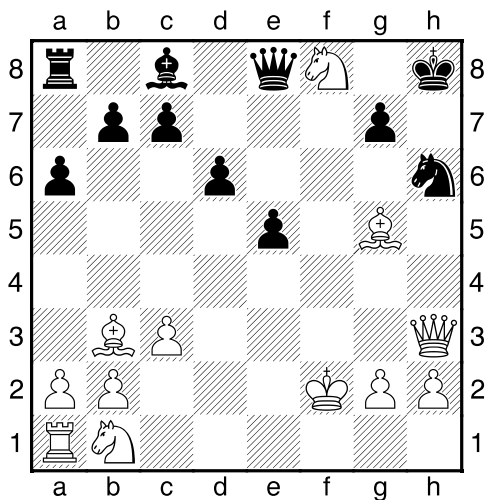
Bílý na tahu



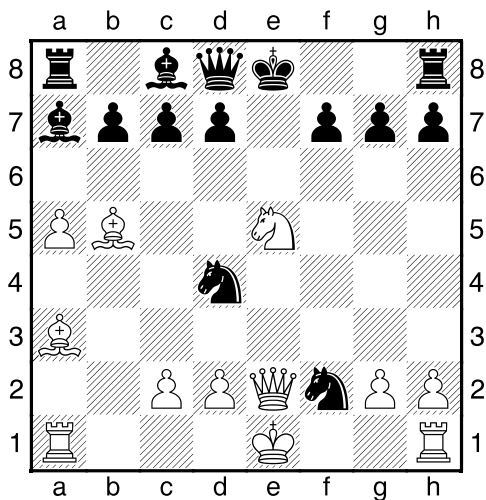
Bílý na tahu



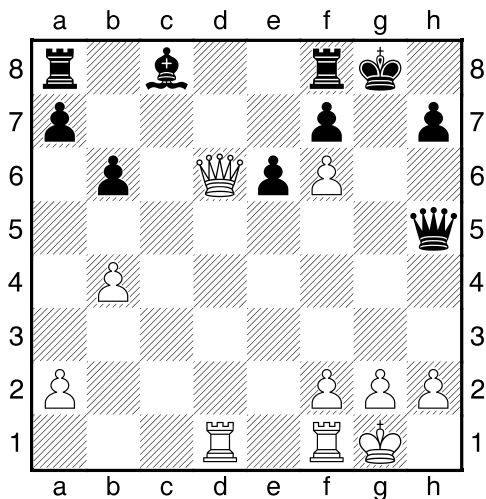
Bílý na tahu



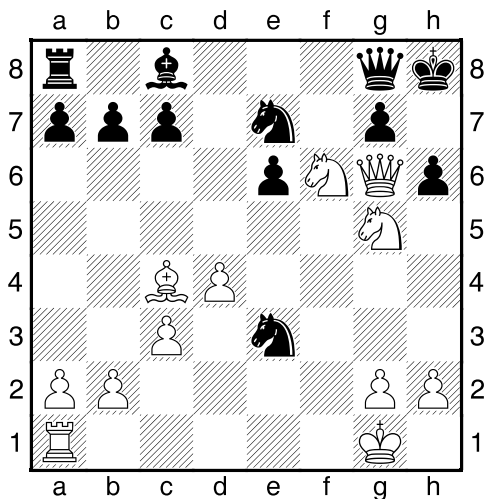
Bílý na tahu



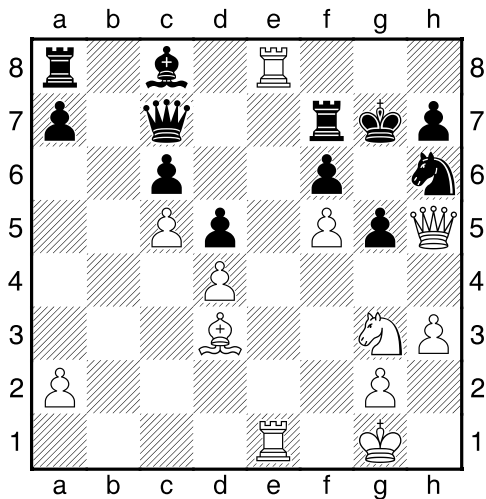
Bílý na tahu



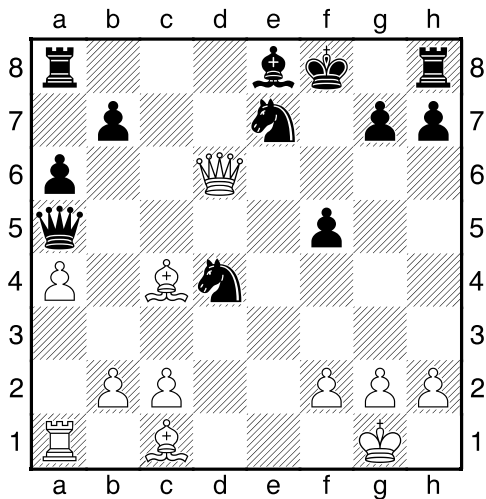
Bílý na tahu



Bílý na tahu



Bílý na tahu



My-Chess 16 (Střední), 19.12.2022

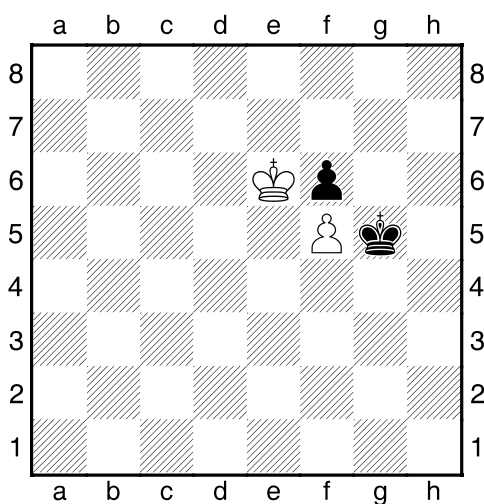
Past
(Biolek 008,4)

!!! Pod každý diagram napište první tah a jak partie dopadne !!!

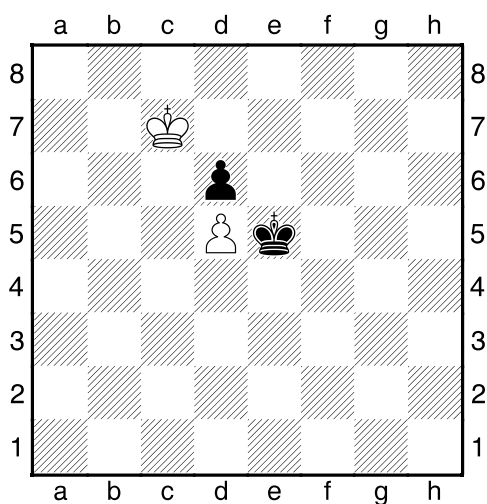
strana 3/3



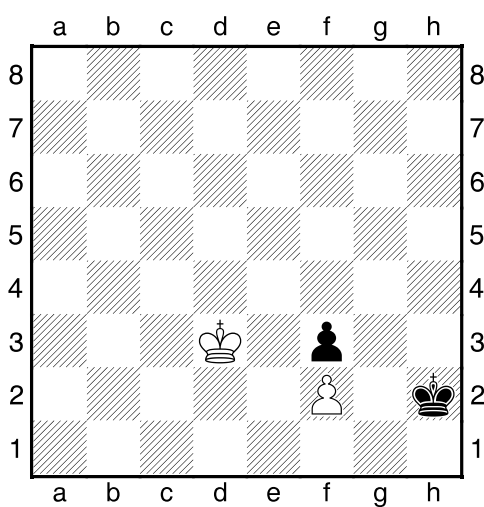
1. příklad Černý na tahu



2. příklad Bílý na tahu



3. příklad Černý na tahu



4. příklad Bílý na tahu

