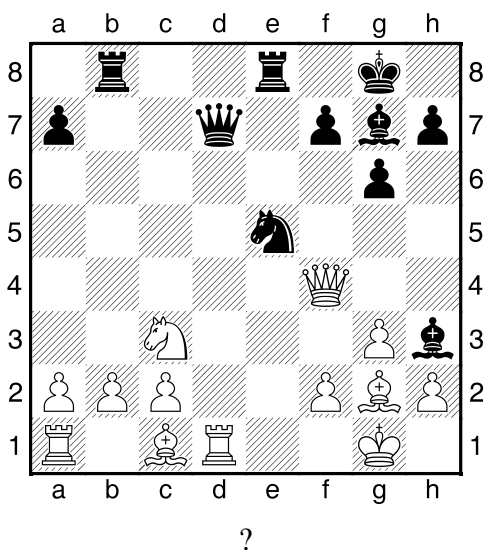
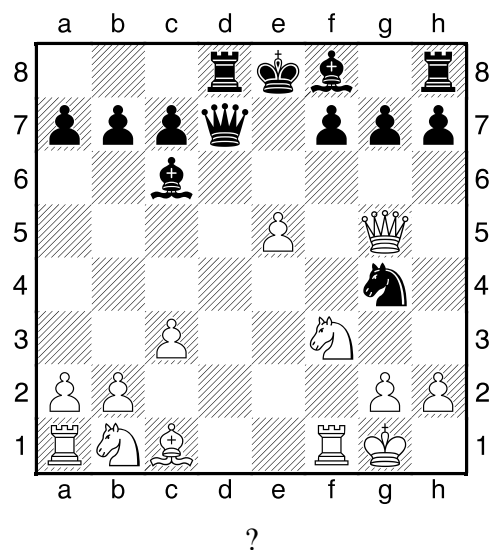


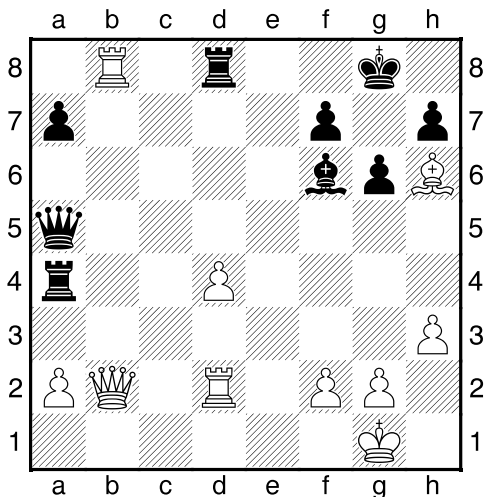
1. příklad Černý na tahu (pš x195)



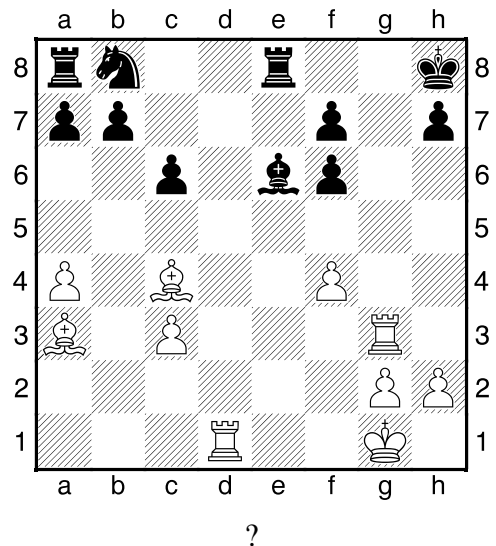
2. příklad Černý na tahu (pš 1/137)



3. příklad Bílý na tahu (pš 1/130)

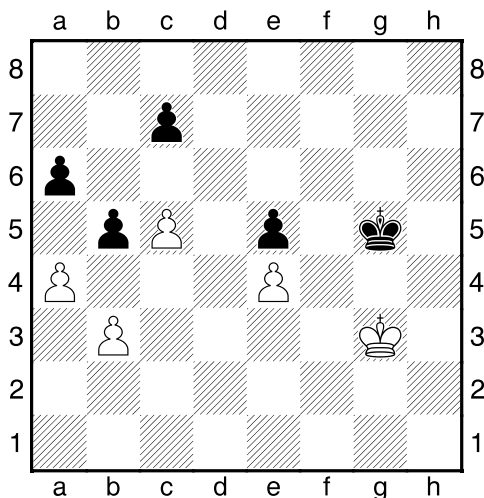


4. příklad Bílý na tahu (pš x126)



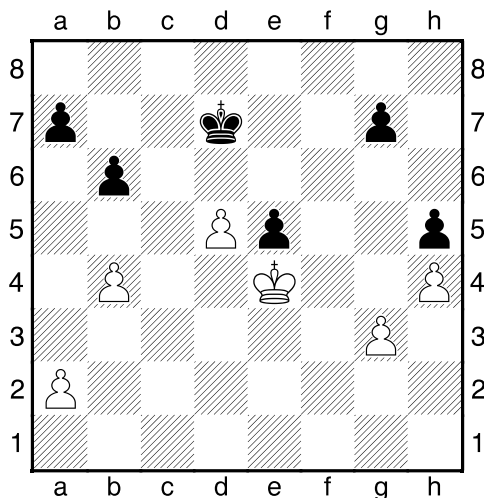
Jak se dostat na slabou 8. řadu černého?

Černý na tahu



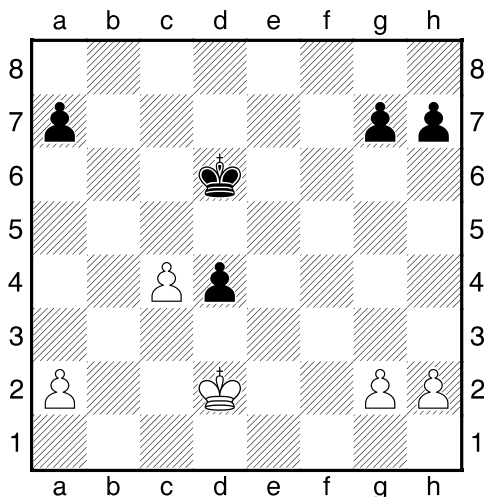
Co byste zahráli a jak partie dopadne?

Černý na tahu



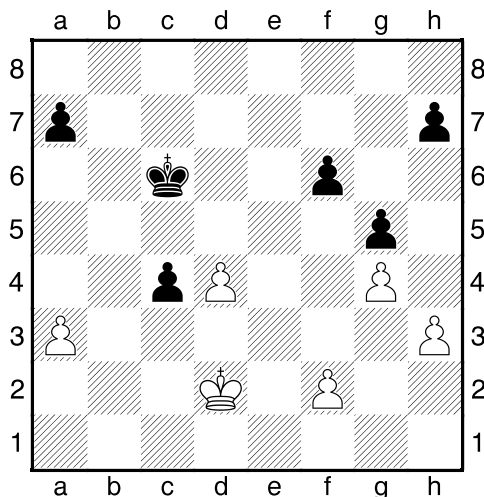
Co byste zahráli a jak partie dopadne?

Černý na tahu



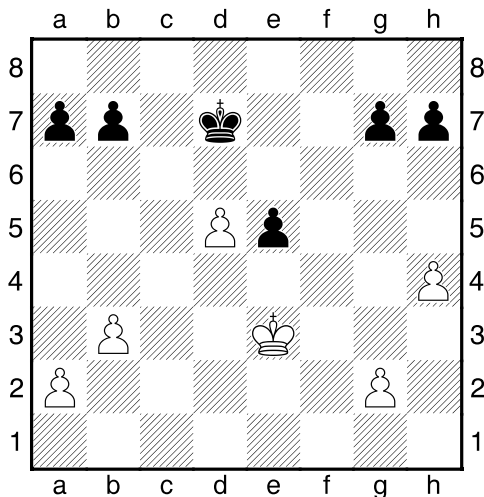
Co byste zahráli a jak partie dopadne?

Černý na tahu



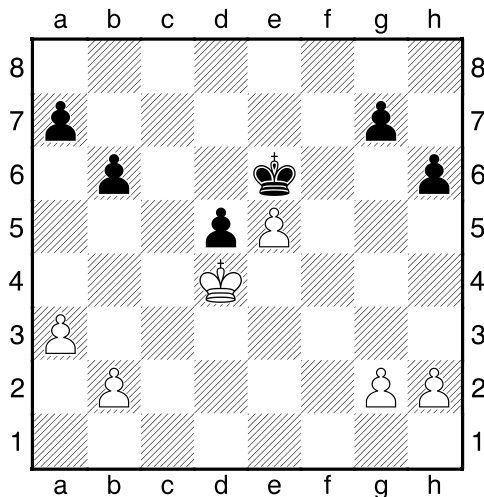
Co byste zahráli a jak partie dopadne?

Bílý na tahu



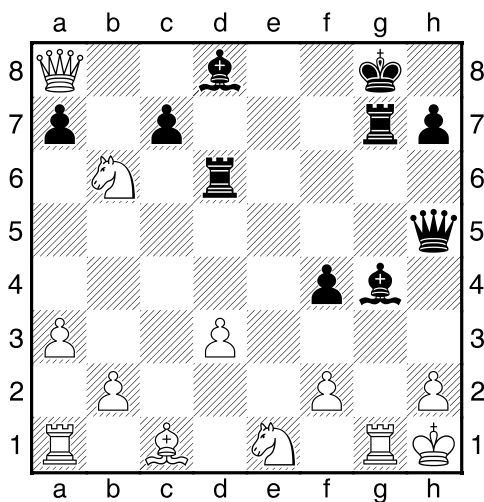
Co byste zahráli a jak partie dopadne?

Černý na tahu

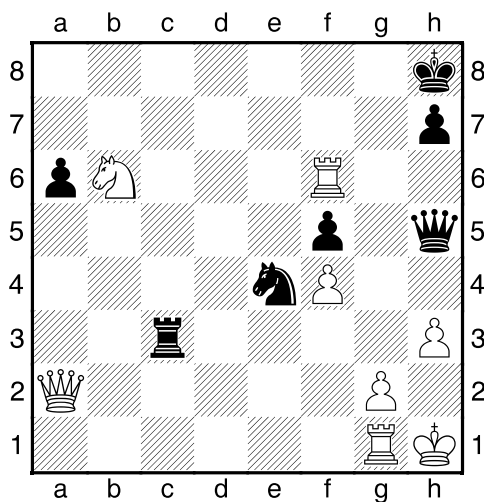


Co byste zahráli a jak partie dopadne?

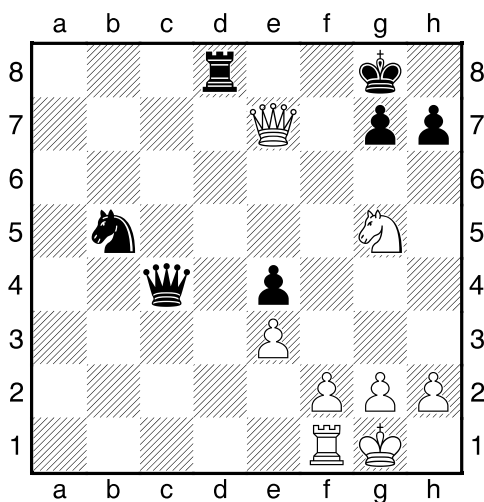
Černý na tahu



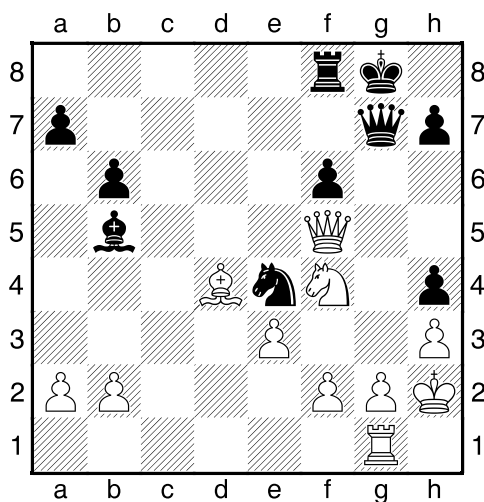
Černý na tahu



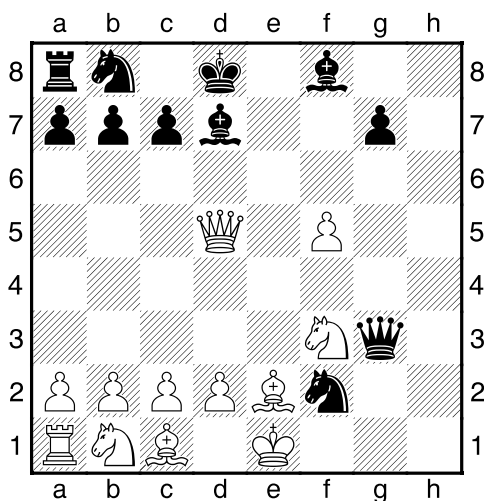
Černý na tahu



Černý na tahu



Černý na tahu



Černý na tahu

