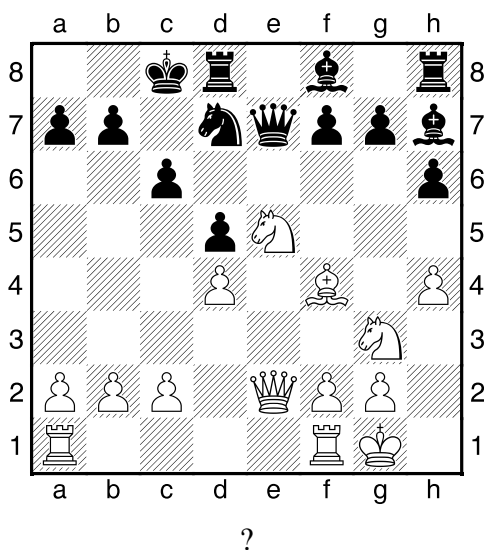
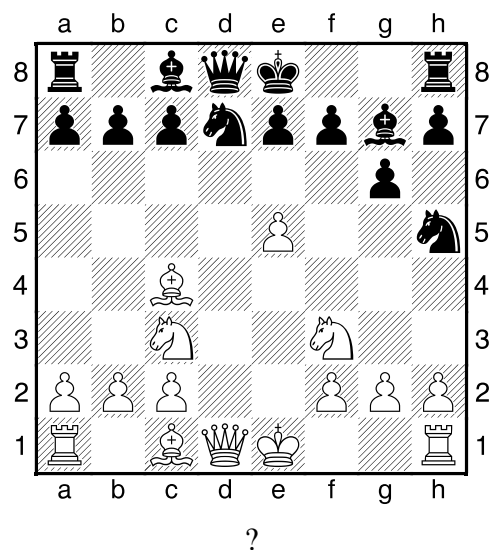


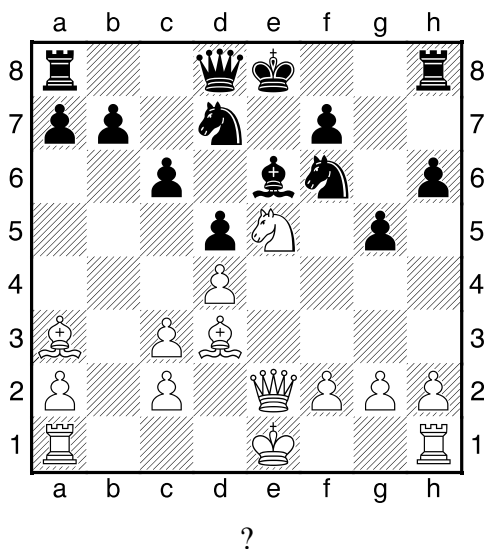
1. příklad Bílý na tahu (pš x313)



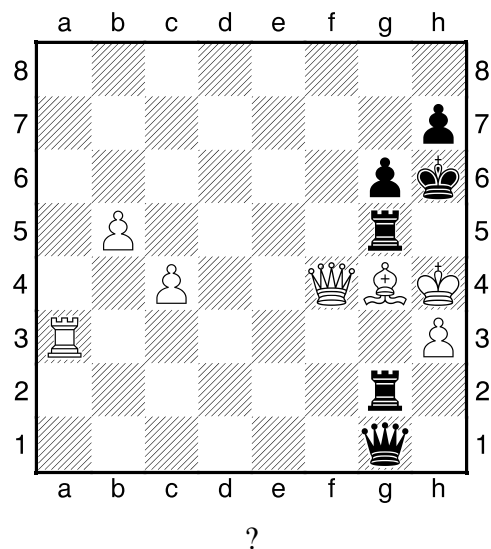
2. příklad Bílý na tahu (pš 2/279)



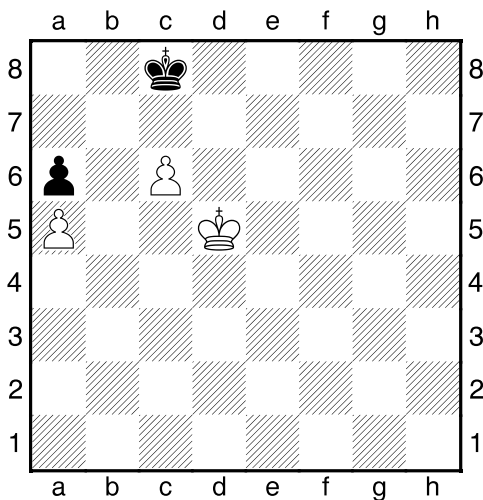
3. příklad Bílý na tahu (pš 2/192)



4. příklad Černý na tahu (pš 3/90)

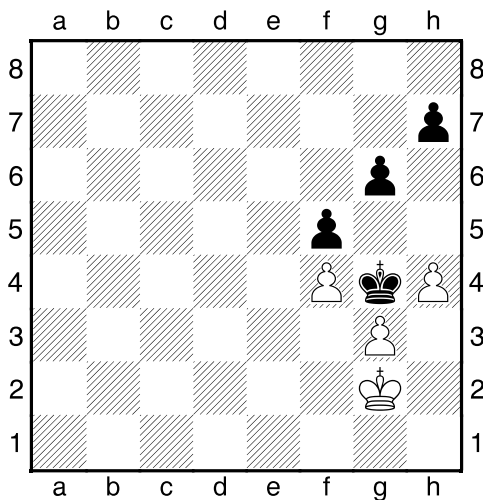


Černý na tahu



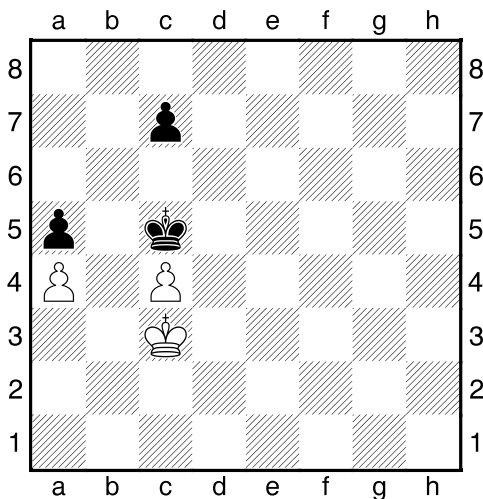
Co byste zahráli a jak partie dopadne?

Černý na tahu



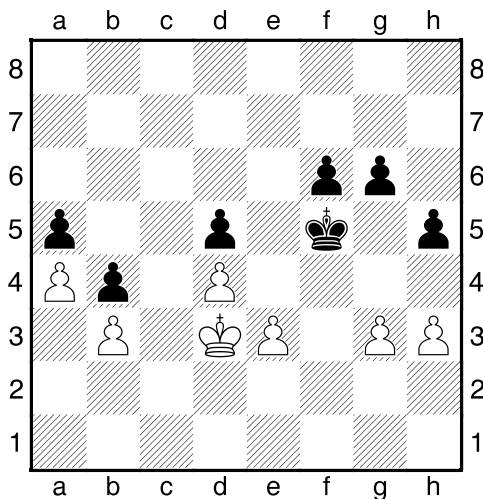
Co byste zahráli a jak partie dopadne?

Černý na tahu



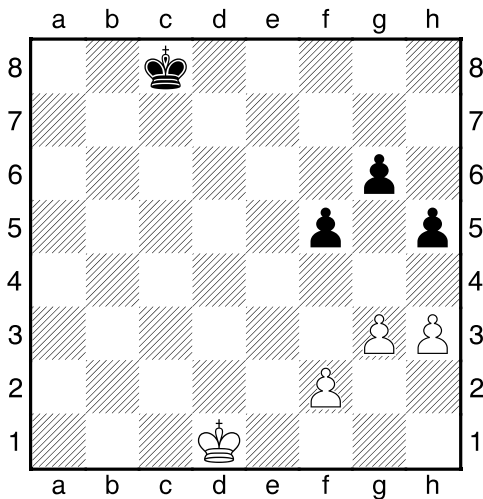
Co byste zahráli a jak partie dopadne?

Černý na tahu



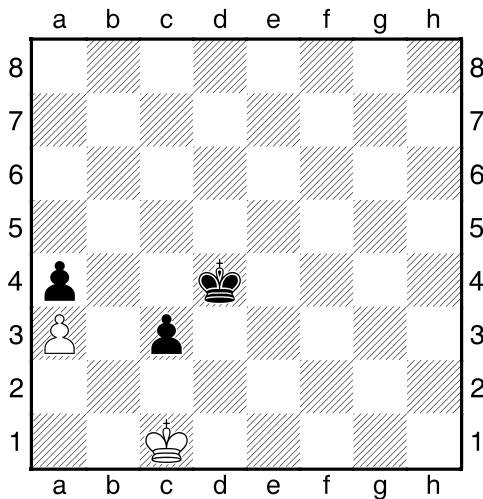
Co byste zahráli a jak partie dopadne?

Bílý na tahu



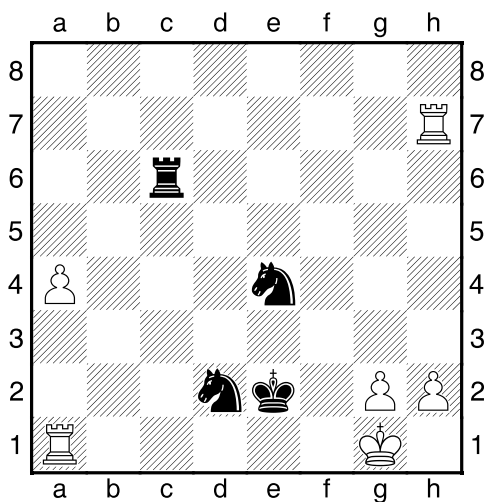
Co byste zahráli a jak partie dopadne?

Černý na tahu

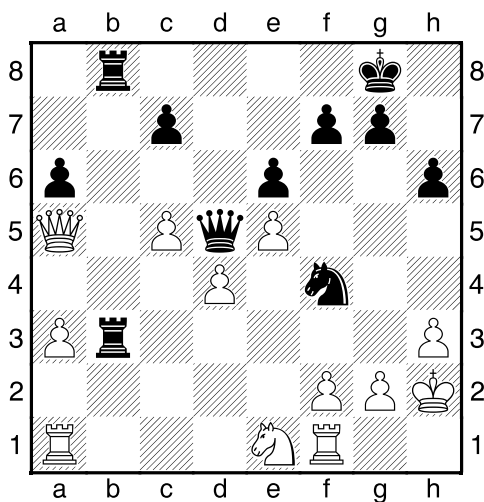


Co byste zahráli a jak partie dopadne?

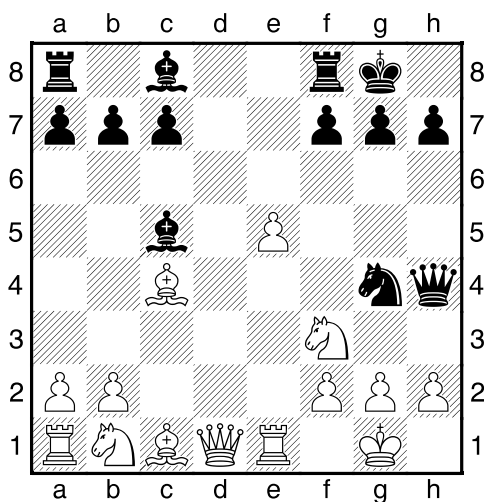
Černý na tahu



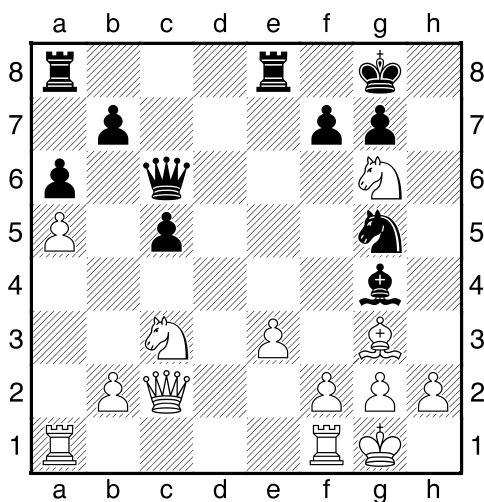
Černý na tahu



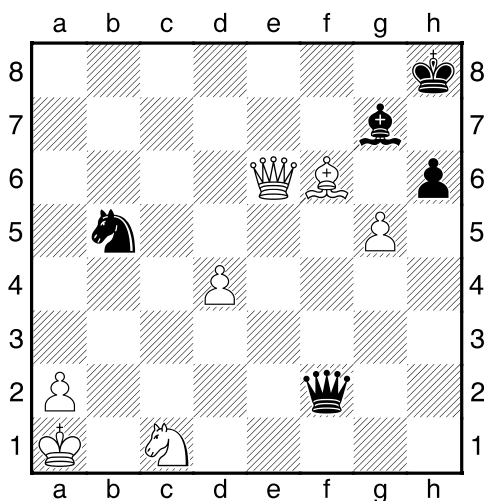
Černý na tahu



Černý na tahu



Černý na tahu



Černý na tahu

