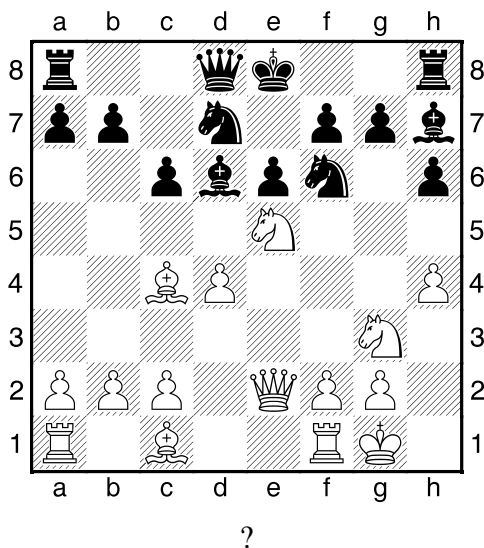
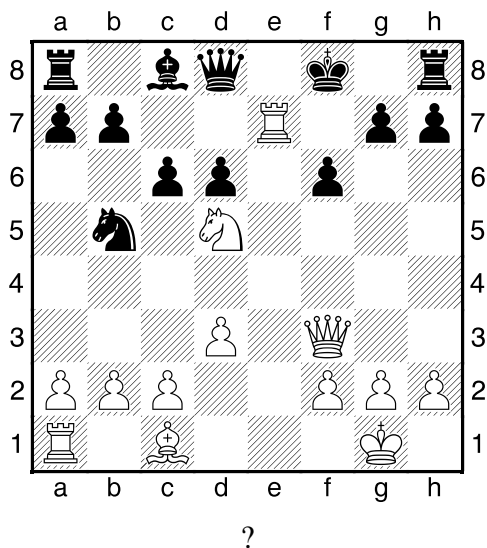


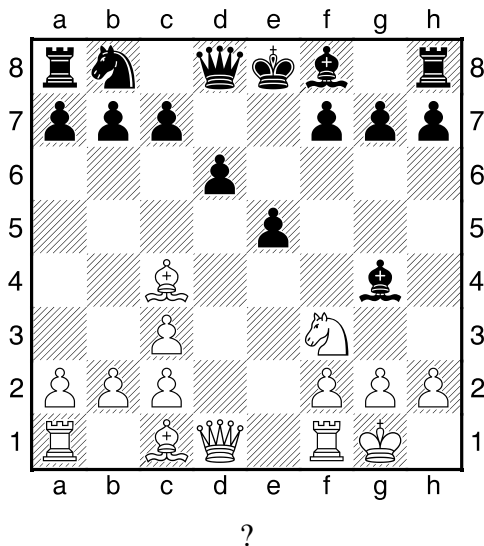
1. příklad Bílý na tahu (pš 3/246)



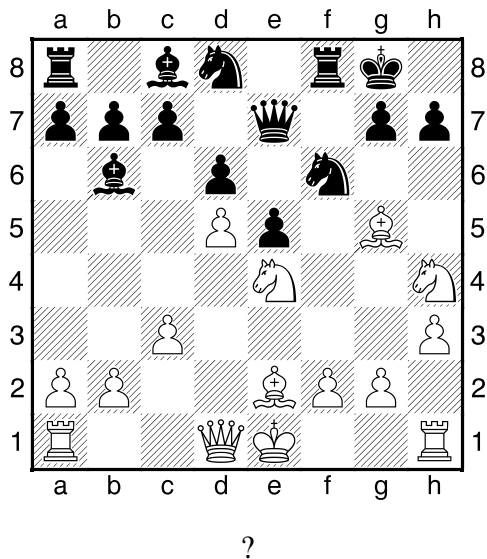
2. příklad Bílý na tahu (pš 2/305)



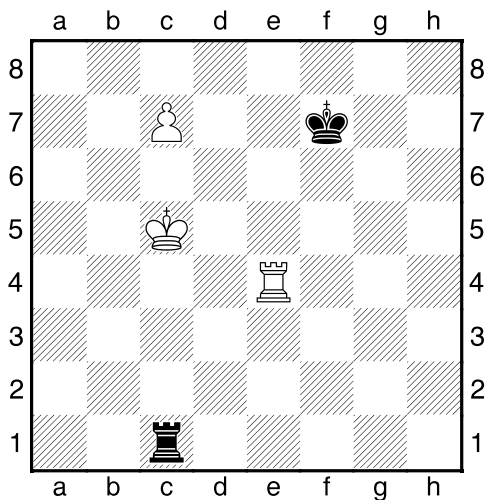
3. příklad Bílý na tahu (pš 2/296)



4. příklad Černý na tahu (pš 5/304)

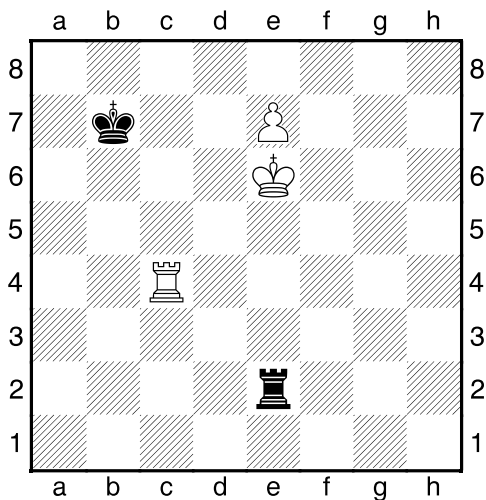


Bílý na tahu



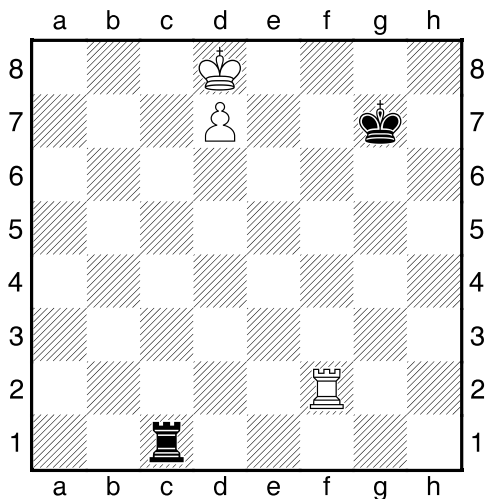
Co byste zahráli a jak partie dopadne?

Bílý na tahu



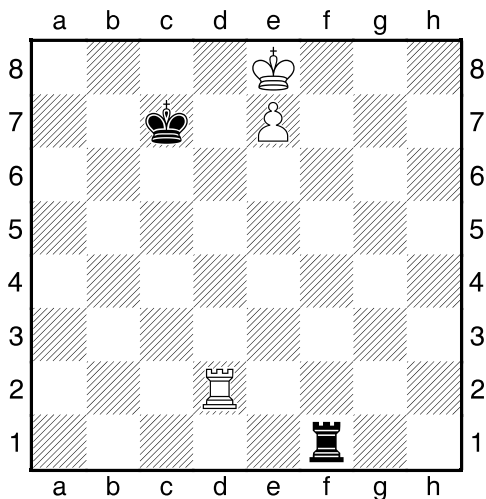
Co byste zahráli a jak partie dopadne?

Bílý na tahu



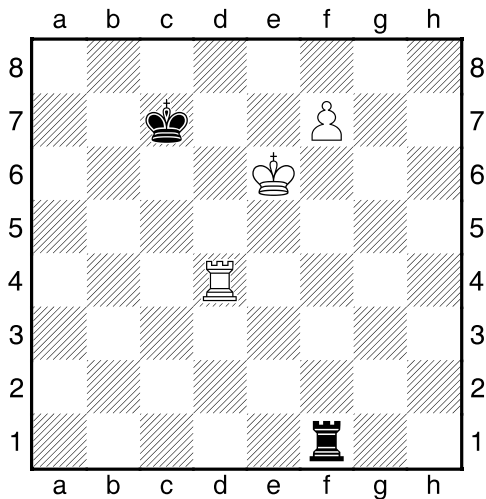
Co byste zahráli a jak partie dopadne?

Bílý na tahu



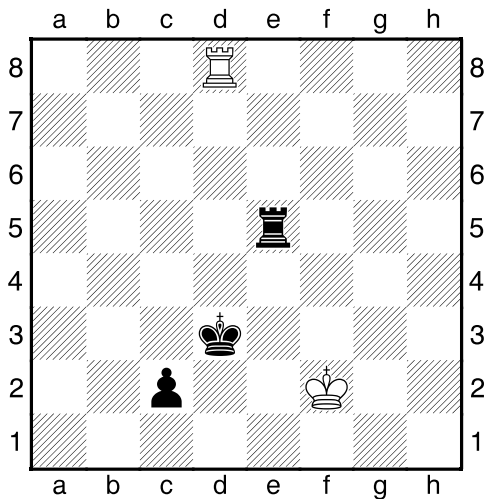
Co byste zahráli a jak partie dopadne?

Bílý na tahu



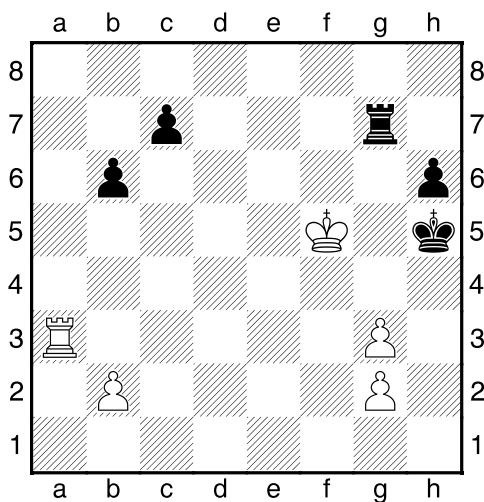
Co byste zahráli a jak partie dopadne?

Černý na tahu

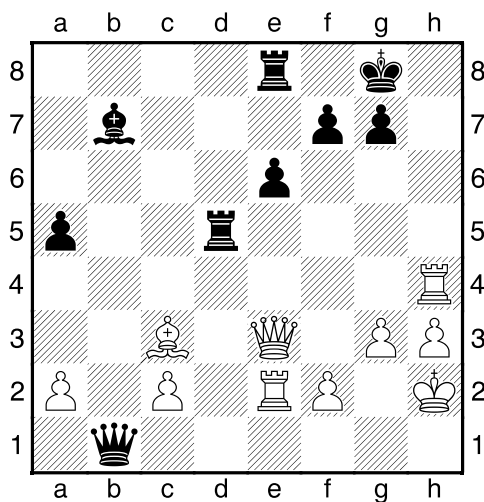


Co byste zahráli a jak partie dopadne?

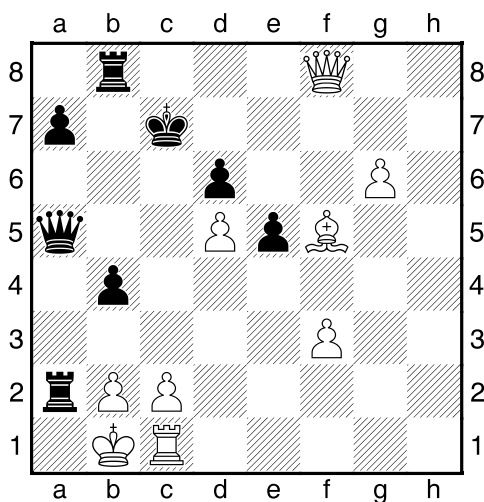
Bílý na tahu



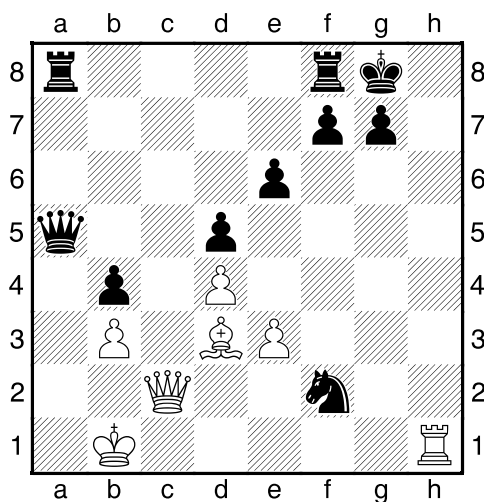
Bílý na tahu



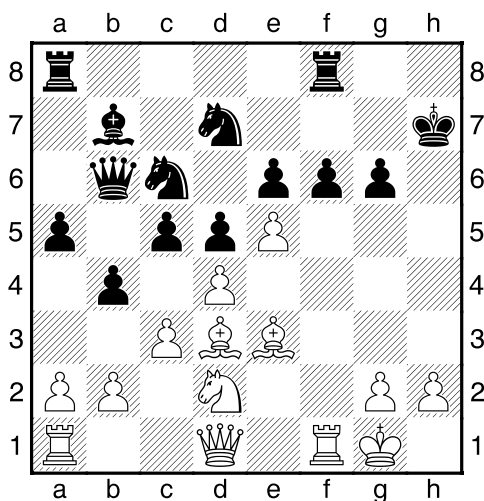
Bílý na tahu



Bílý na tahu



Bílý na tahu



Bílý na tahu

