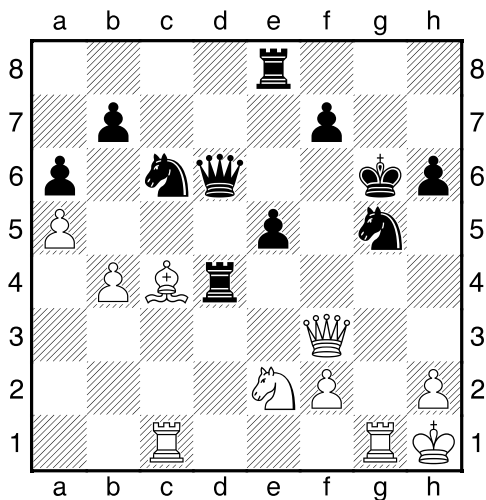
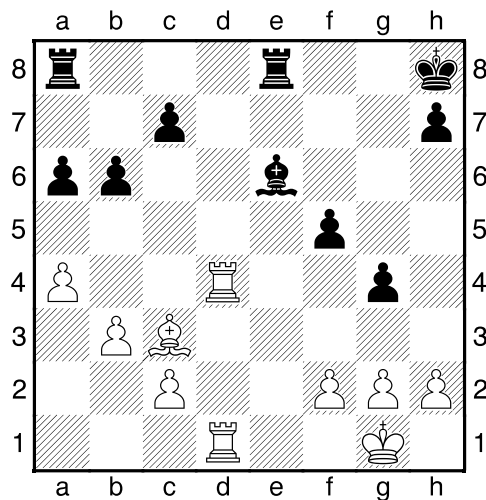


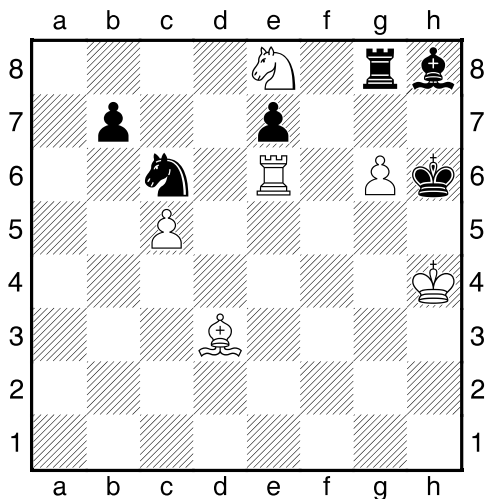
Bílý na tahu (LP,0235)



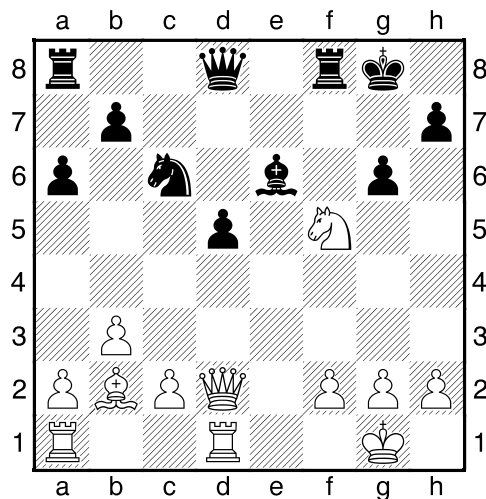
Bílý na tahu (LP,0236)



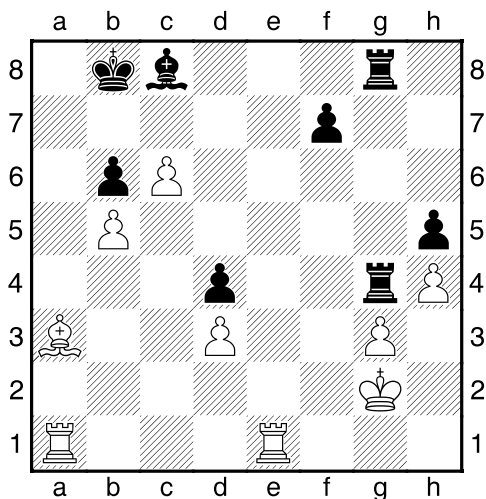
Bílý na tahu (LP,0237)



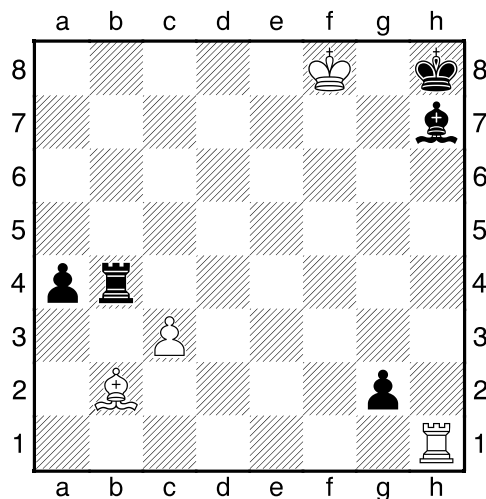
Bílý na tahu (LP,0238)



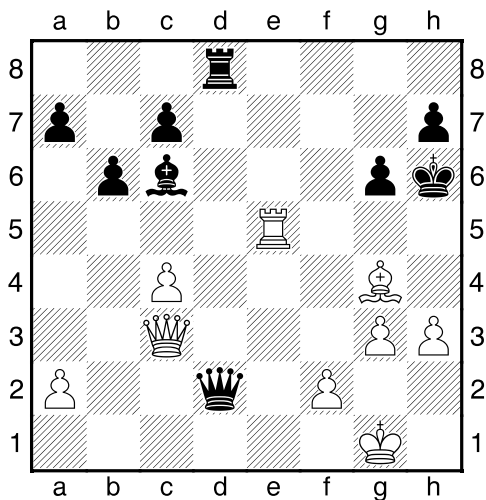
Bílý na tahu (LP,0239)



Bílý na tahu (LP,0240)

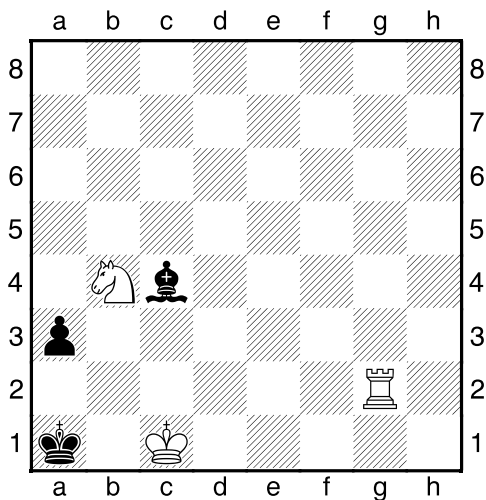


Bílý na tahu



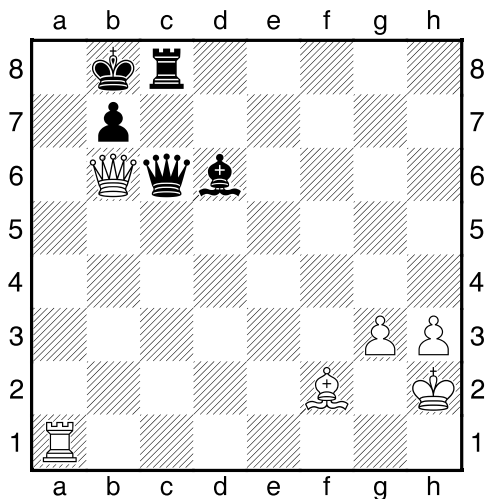
NÁPOVĚDA: 1.Vh5+

Bílý na tahu



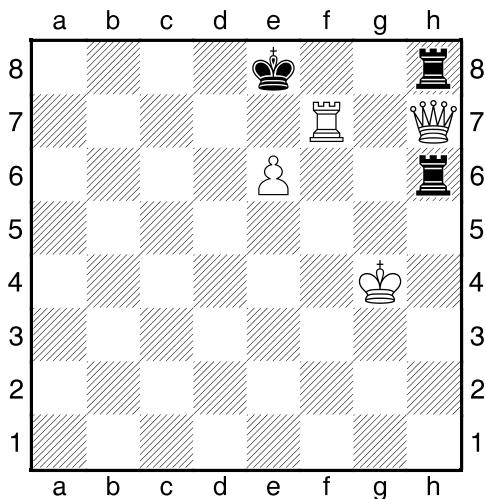
NÁPOVĚDA: 1.Va2+

Bílý na tahu



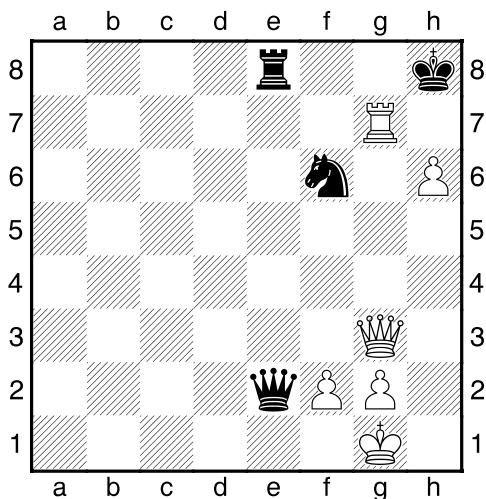
NÁPOVĚDA: 1.Va8+

Bílý na tahu



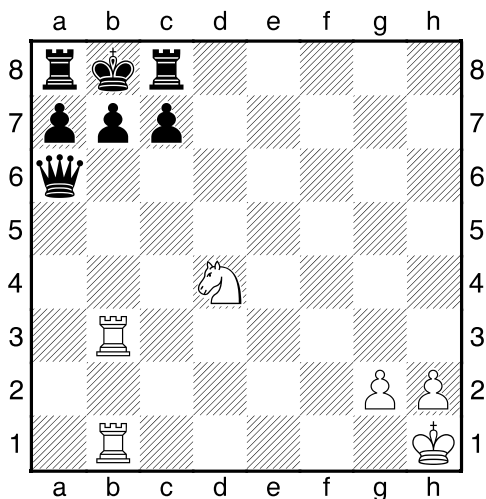
NÁPOVĚDA: 1.Vf8+

Bílý na tahu



NÁPOVĚDA: 1.Vh7+

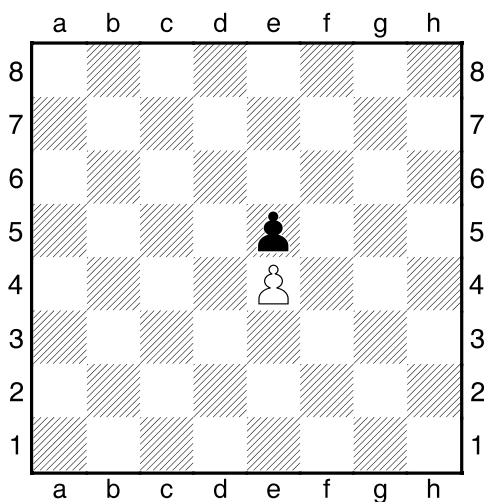
Bílý na tahu



NÁPOVĚDA: 1.Vxb7+

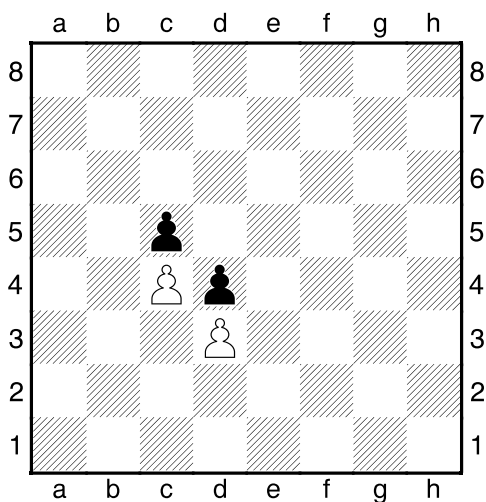


1. příklad Cvičná pozice



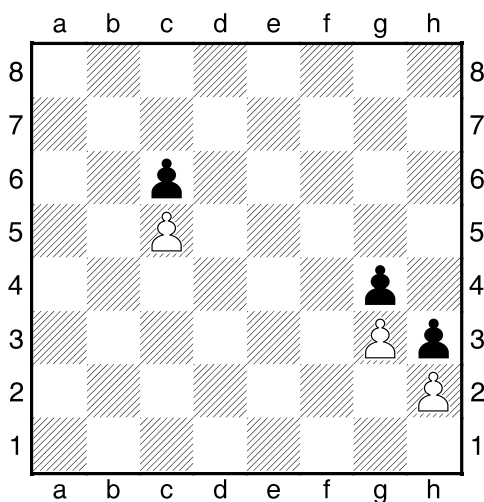
Jaká jsou mezní pole pěšce e5?

2. příklad Cvičná pozice



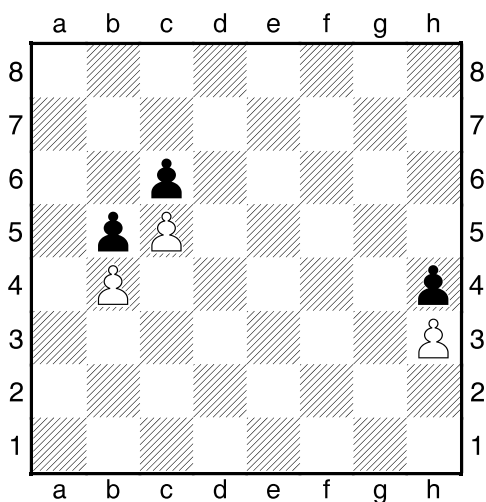
Jaká jsou mezní pole pěšce d3?

3. příklad Cvičná pozice



Jaká jsou mezní pole pěšců c6 a g4?

4. příklad Cvičná pozice



Jaká jsou mezní pole pěšců b4 a h3?