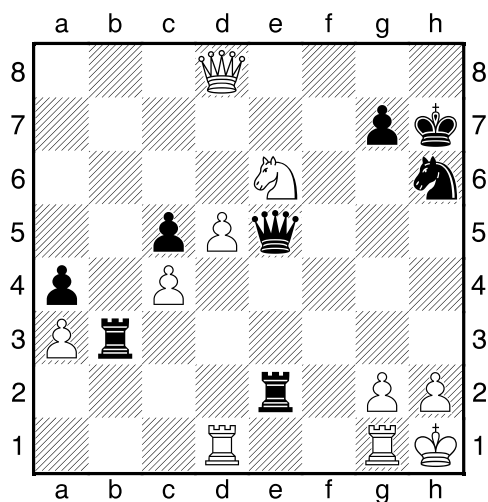
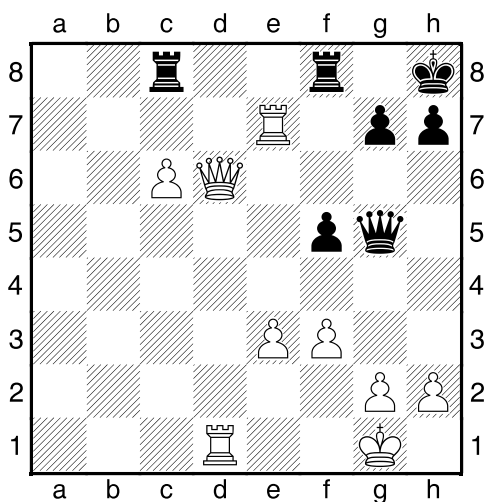


1. příklad Černý na tahu (pš x242)

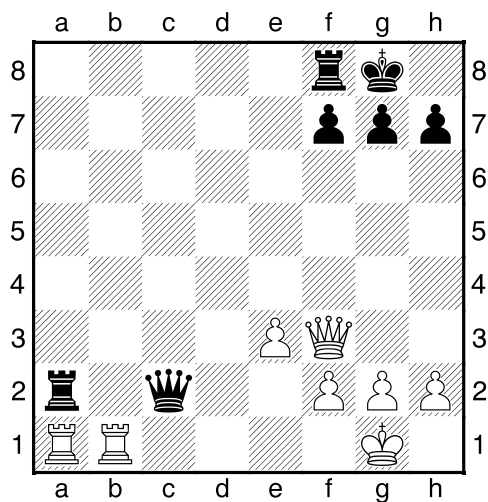


2. příklad Černý na tahu (pš x008)

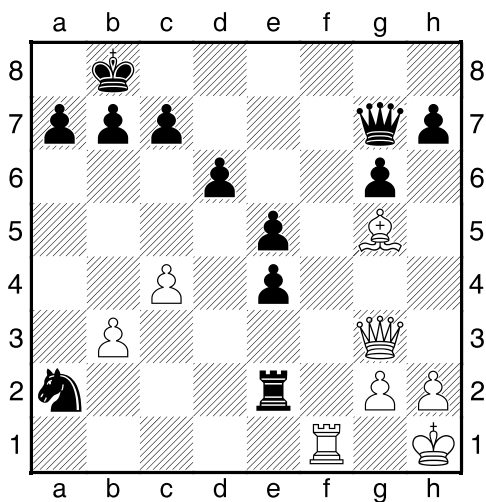


Černý zahrál 1...Vxc6, jak odpověděl bílý?

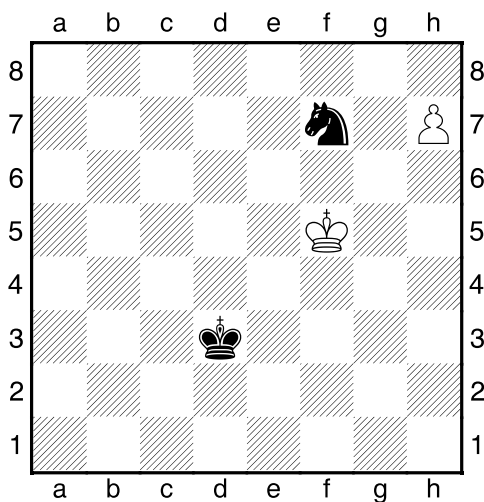
3. příklad Černý na tahu (pš 1/11)



4. příklad Bílý na tahu (pš x015)

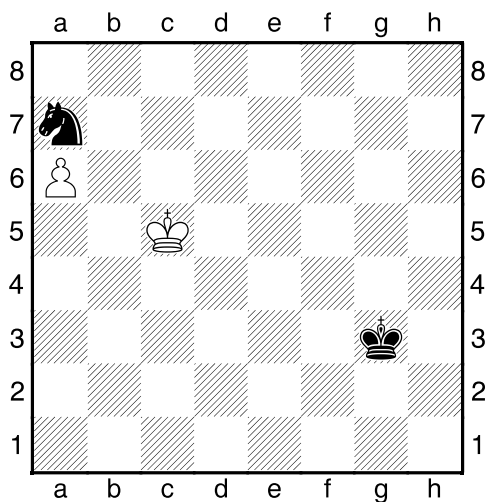


Bílý na tahu



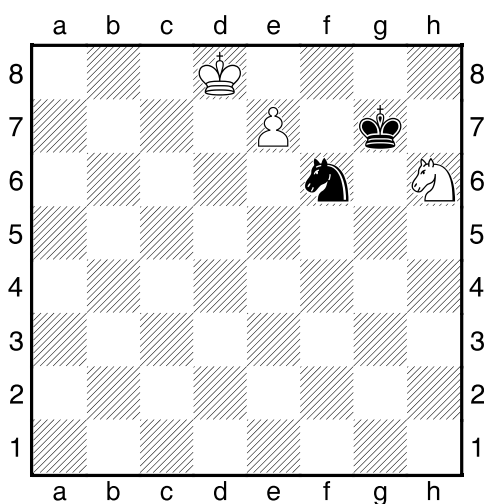
Co byste zahráli a jak partie dopadne?

Bílý na tahu



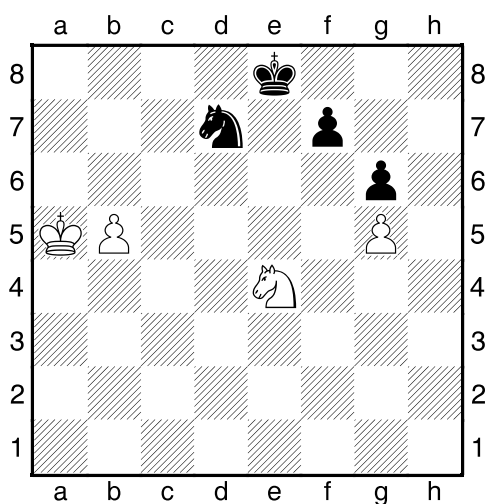
Co byste zahráli a jak partie dopadne?

Bílý na tahu



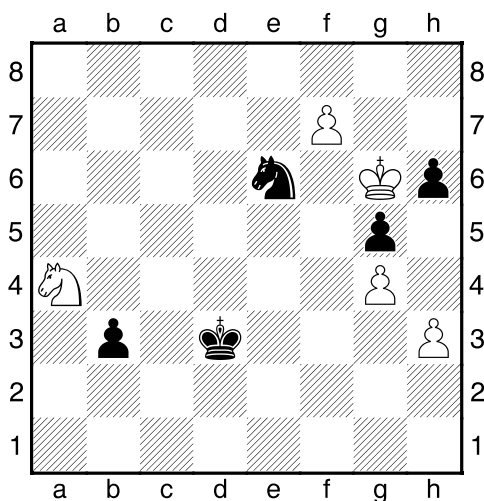
Co byste zahráli a jak partie dopadne?

Bílý na tahu



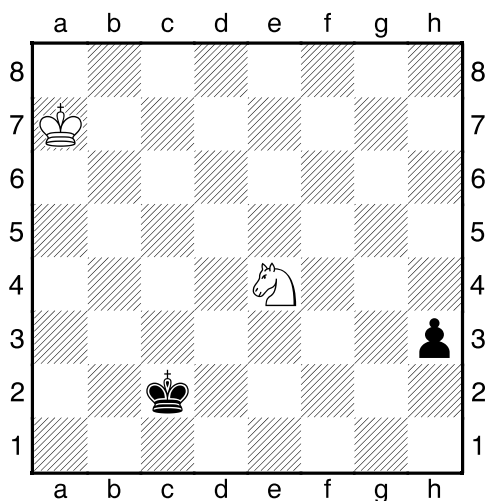
Co byste zahráli a jak partie dopadne?

Bílý na tahu



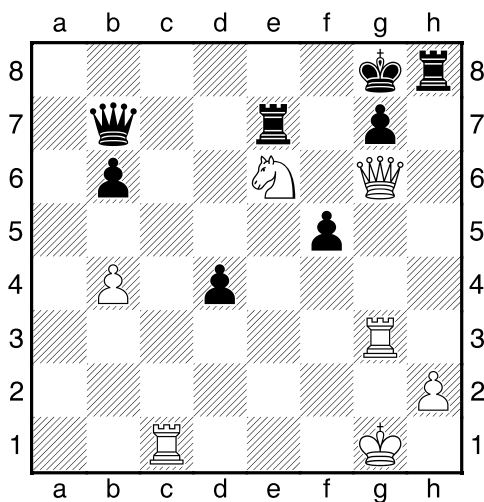
Co byste zahráli a jak partie dopadne?

Černý na tahu

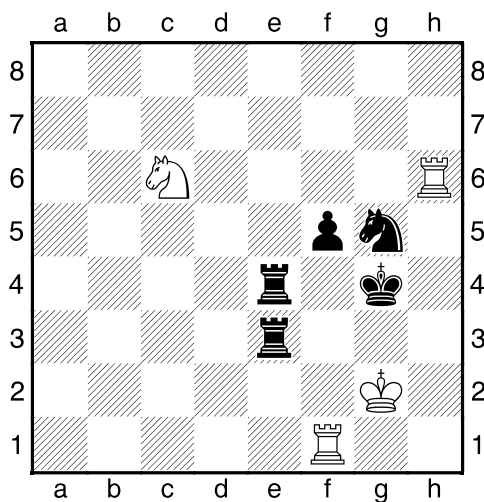


Co byste zahráli a jak partie dopadne?

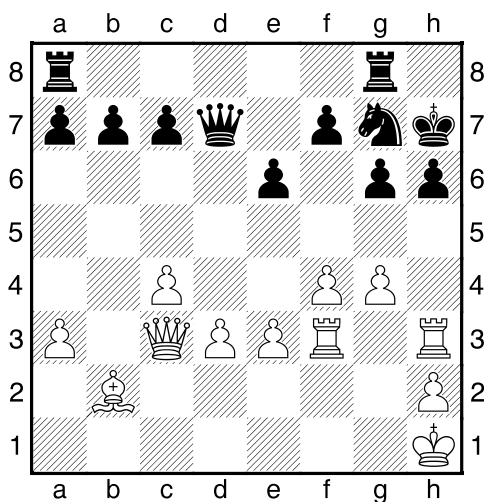
Bílý na tahu



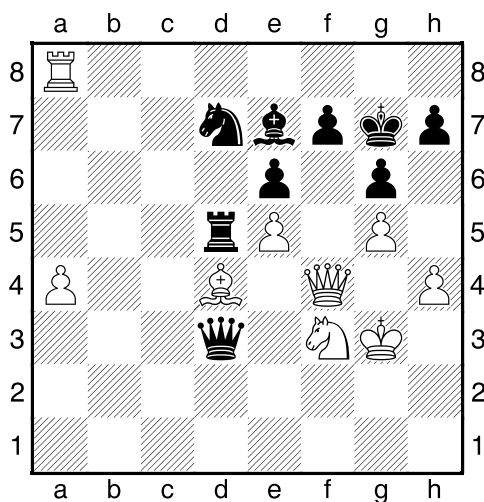
Bílý na tahu



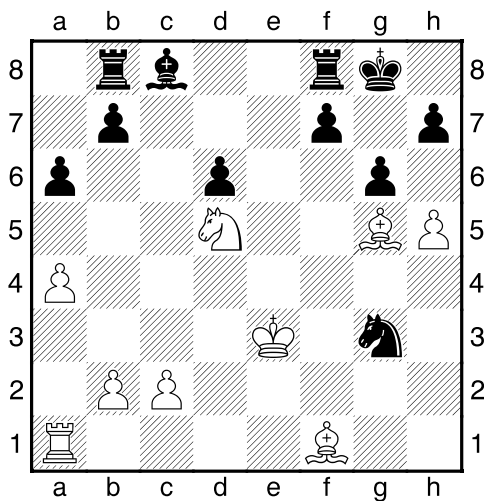
Bílý na tahu



Bílý na tahu



Bílý na tahu



Bílý na tahu

