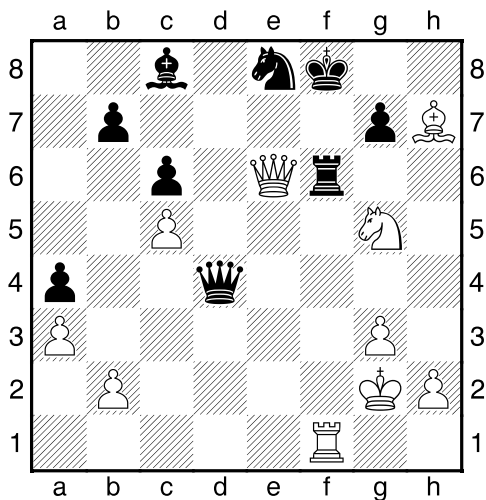
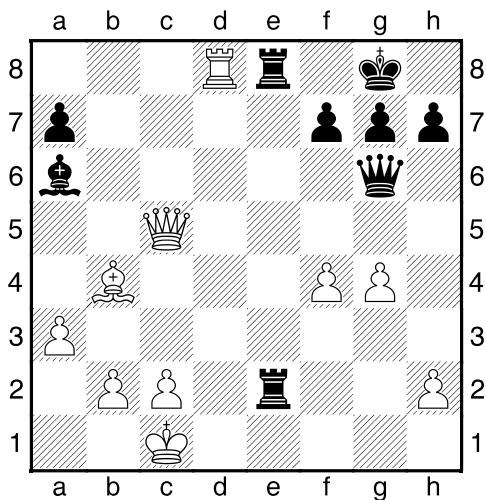


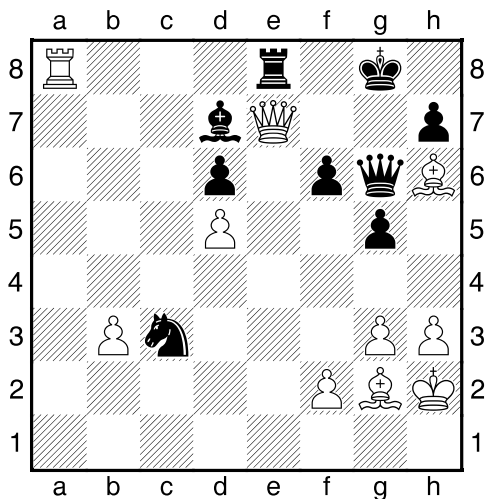
Bílý na tahu



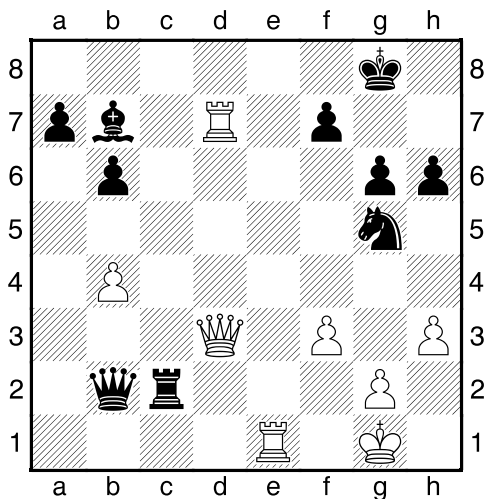
Bílý na tahu



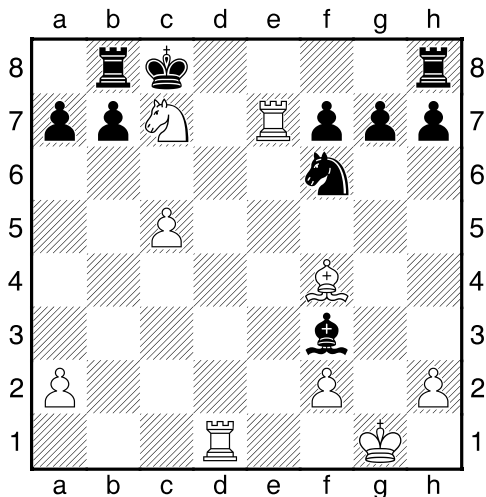
Bílý na tahu



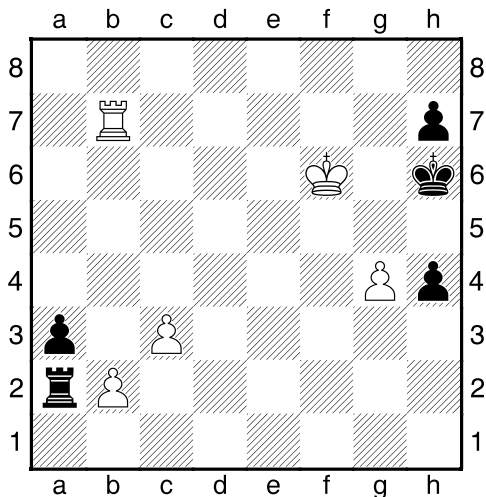
Bílý na tahu



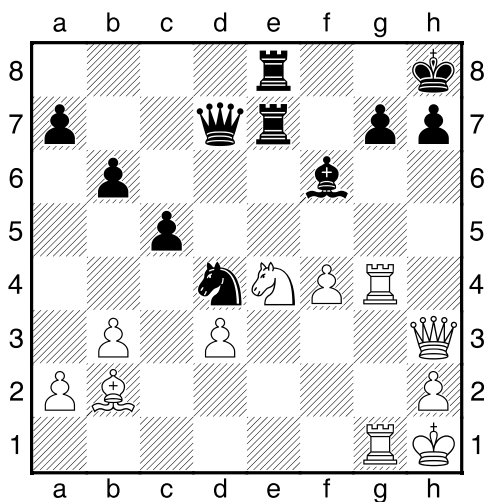
Bílý na tahu



Bílý na tahu

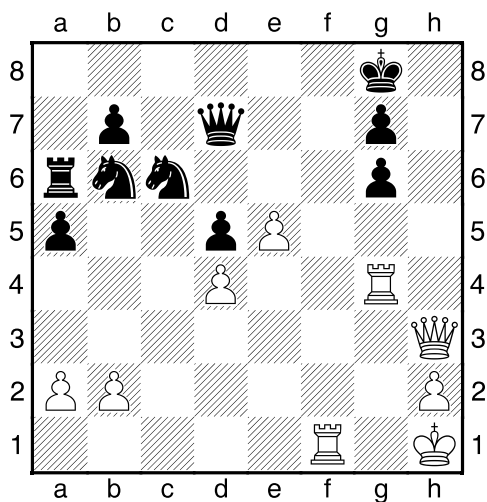


Bílý na tahu



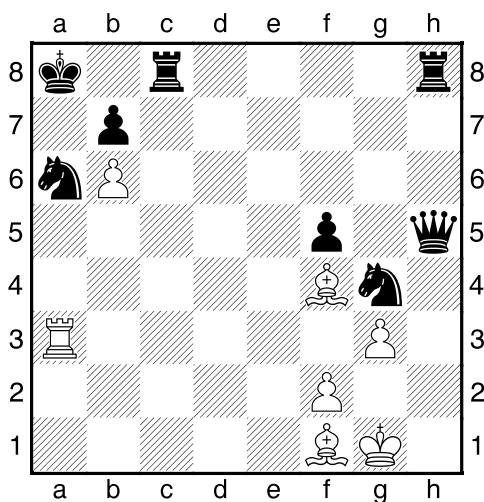
NÁPOVĚDA: 1.Dxh7+

Bílý na tahu



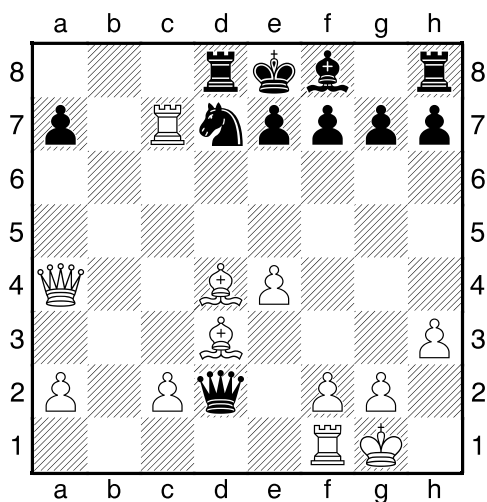
NÁPOVĚDA: 1.Dh8+

Bílý na tahu



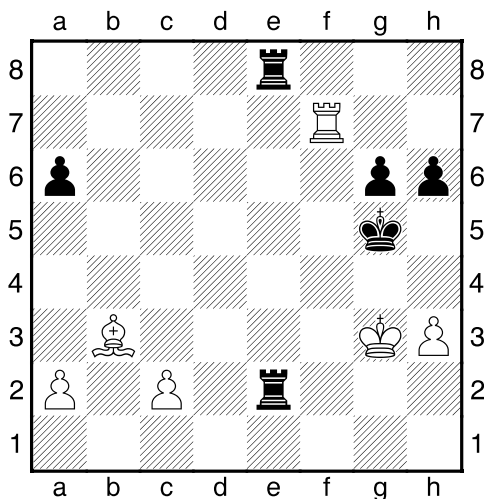
NÁPOVĚDA: 1.Vxa6+

Bílý na tahu



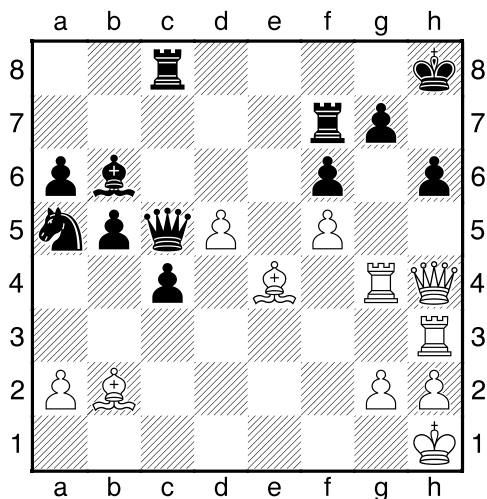
NÁPOVĚDA: 1.Dxd7+

Bílý na tahu



NÁPOVĚDA: 1.h4+

Bílý na tahu



NÁPOVĚDA: 1.Dxh6+

My-Chess 38 (Střední), 05.06.2023

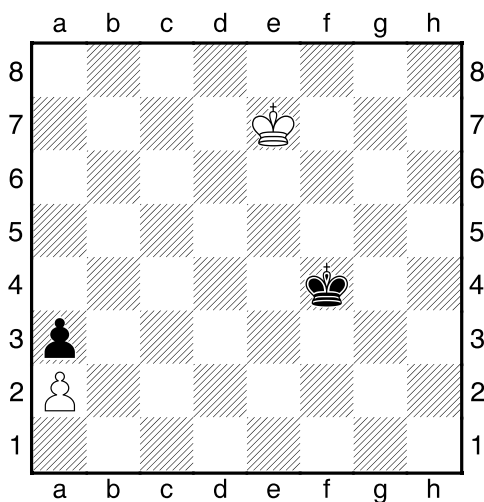
Past a bodvček
(ŠK Biolek 009,1x)

!!! Pod každý diagram napište první tah a jak partie dopadne !!!

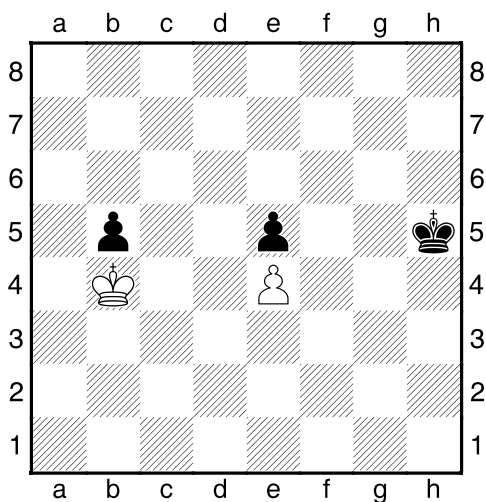
strana 3/3



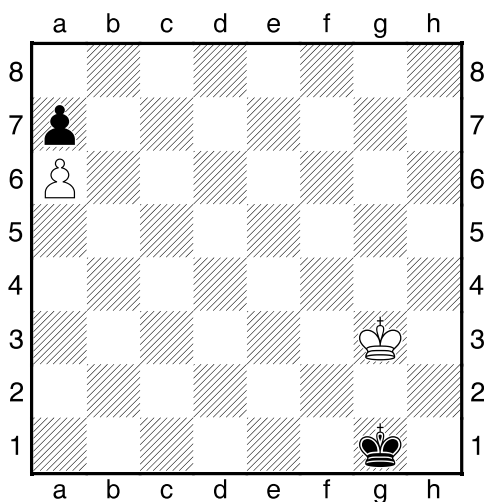
1. příklad Černý na tahu



2. příklad Bílý na tahu



3. příklad Černý na tahu



4. příklad Černý na tahu

