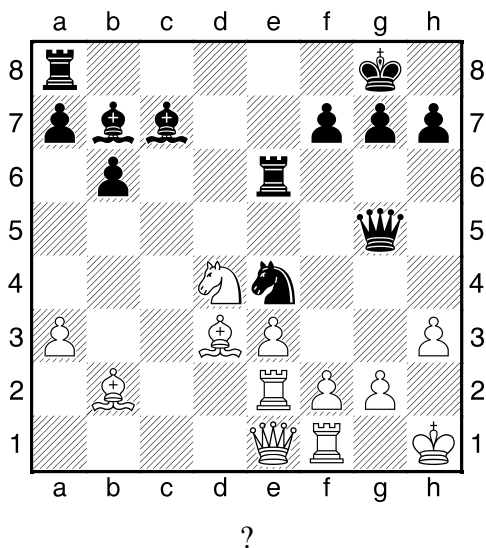
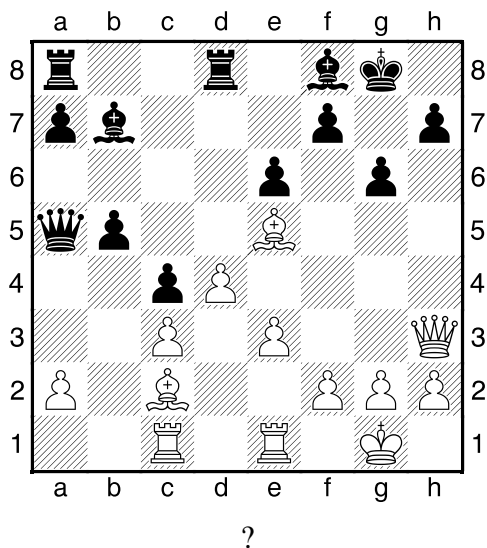


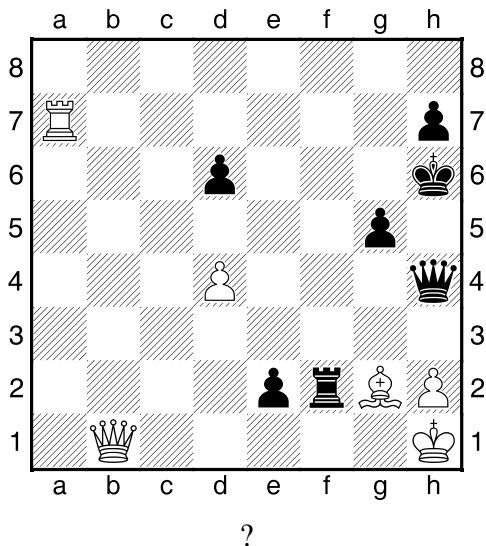
1. příklad Černý na tahu (pš x428)



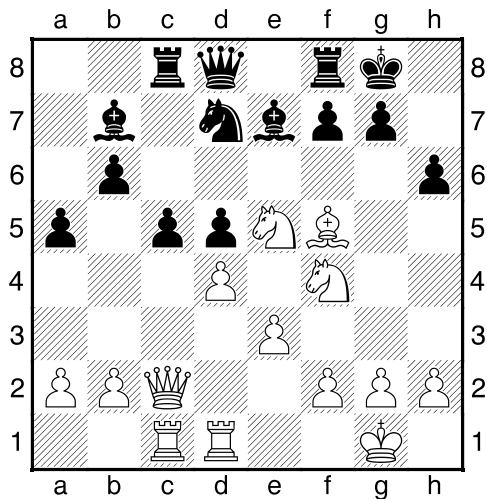
2. příklad Bílý na tahu (pš x290)



3. příklad Černý na tahu (pš x070)

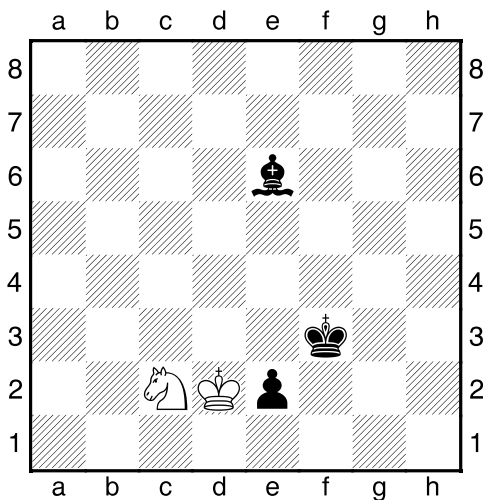


4. příklad Černý na tahu (pš 1/45)



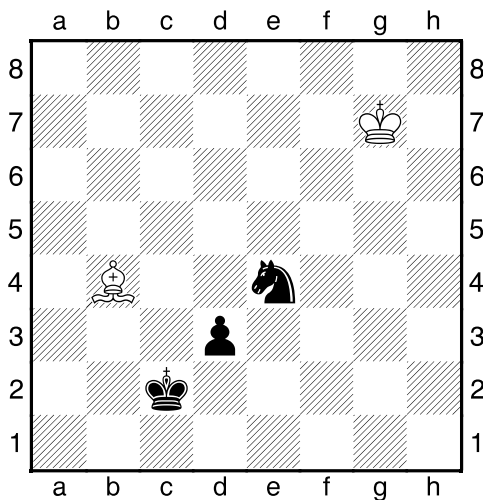
Černý zahrál 1...cxd4.
Jak pokračoval bílý?

Černý na tahu



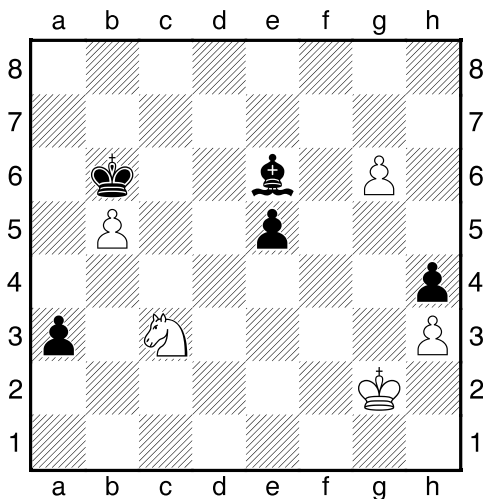
Co byste zahráli a jak partie dopadne?

Černý na tahu



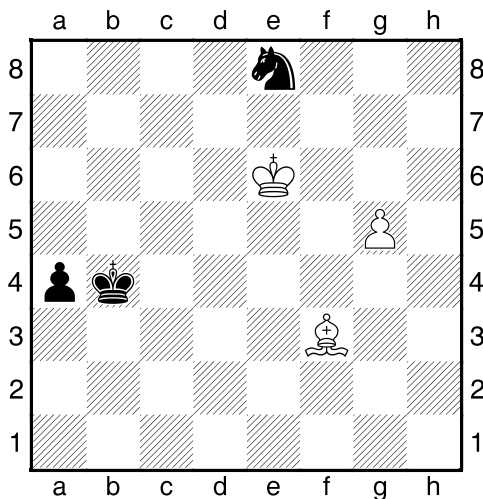
Co byste zahráli a jak partie dopadne?

Černý na tahu



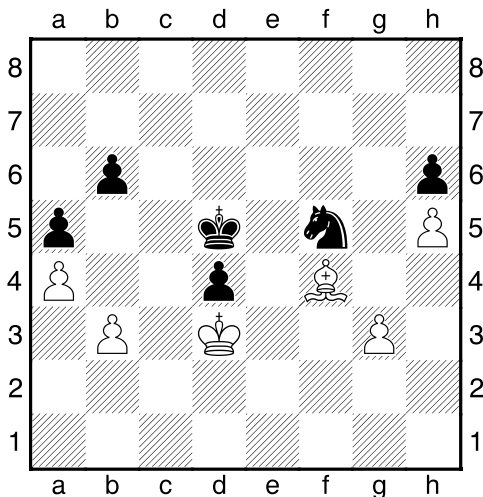
Co byste zahráli a jak partie dopadne?

Černý na tahu



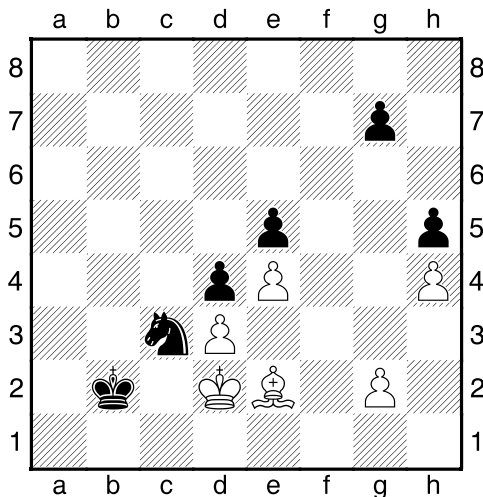
Co byste zahráli a jak partie dopadne?

Bílý na tahu



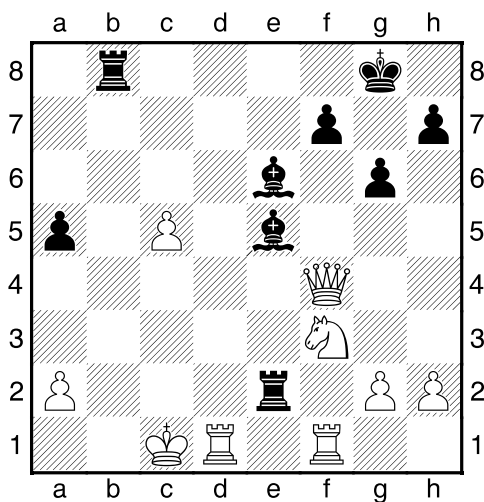
Co byste zahráli a jak partie dopadne?

Černý na tahu

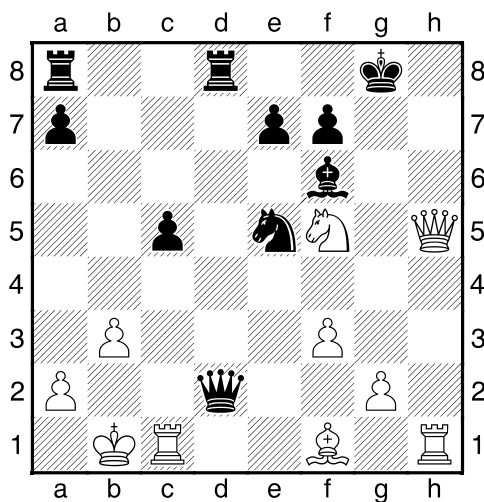


Co byste zahráli a jak partie dopadne?

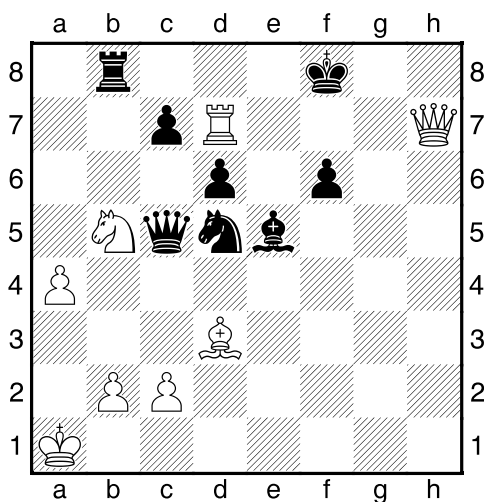
Černý na tahu



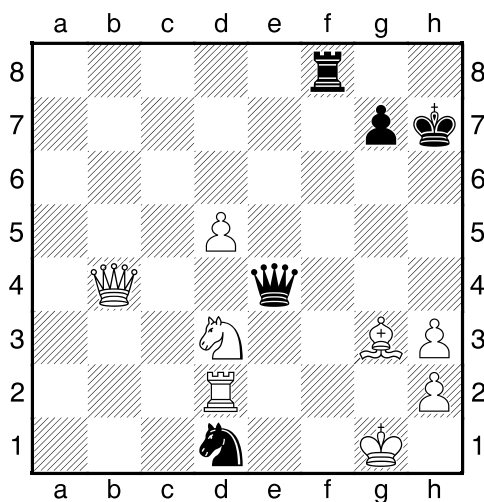
Černý na tahu



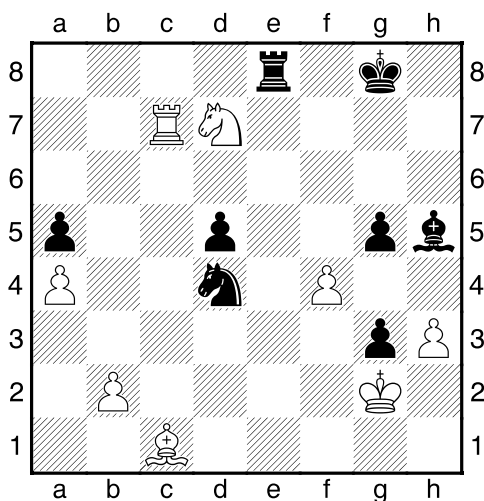
Černý na tahu



Černý na tahu



Černý na tahu



Černý na tahu

